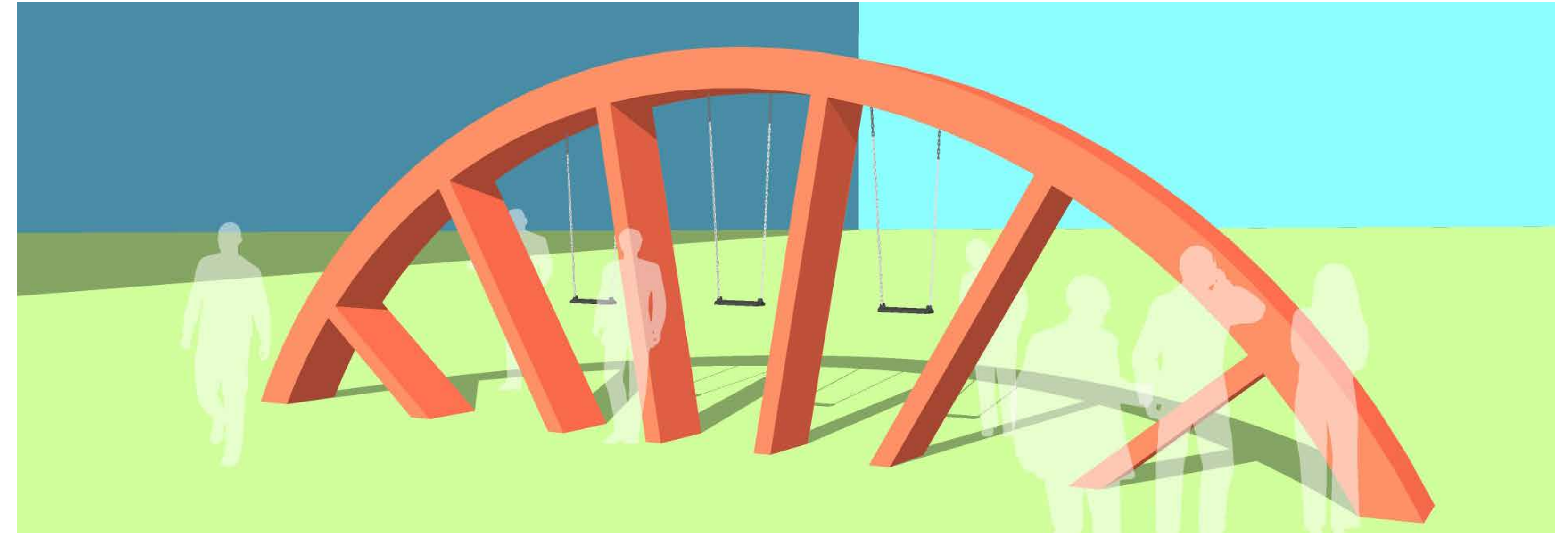


# Downtown Gateway Monuments



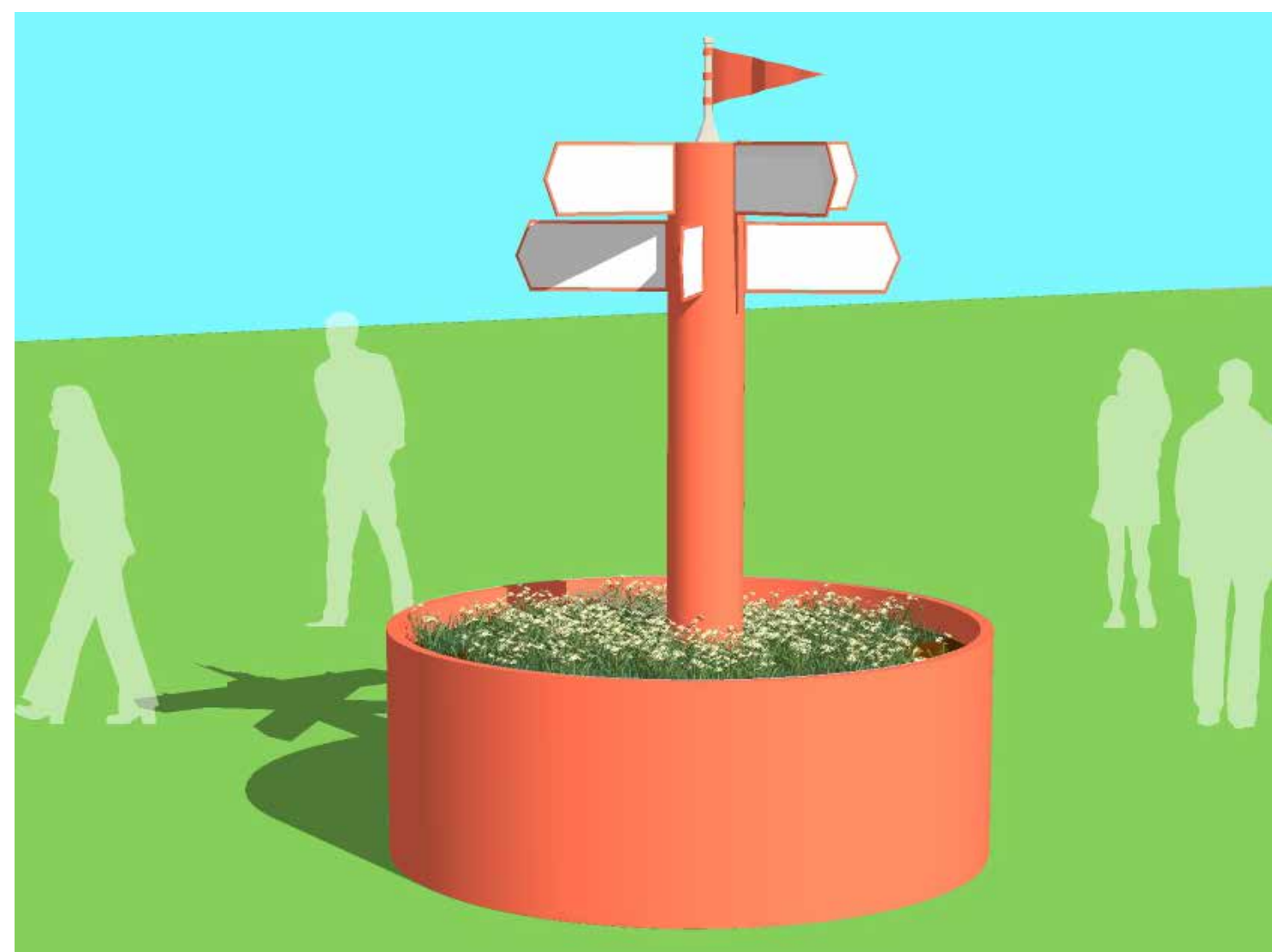
- 20' tall gateway monuments flank State Street at Oxley Creek and attract visitors toward downtown.
- Sculptural form evokes train, bike, and circus wagon wheels, and creates a playful iconic landmark and photo backdrop.
- Materials are galvanized steel or fabricated aluminum, painted red, with structural footings and architectural lighting.
- Monuments can serve as an interpretive feature and rest stop along the proposed bike trail with the addition of gravel surfacing, integrated seating, bike racks, and signage.

# West Gateway Monument



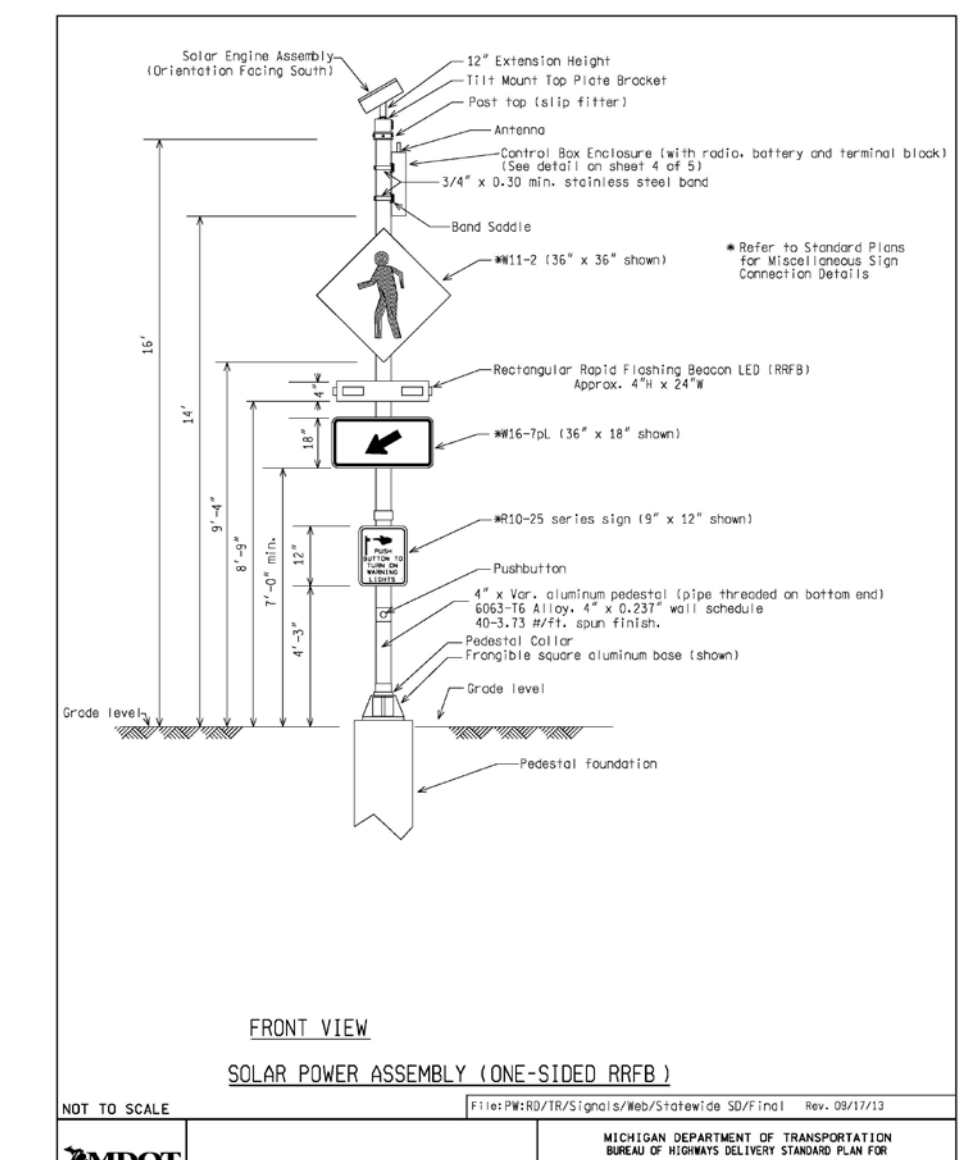
- 12' tall gateway monument visible to bidirectional traffic on Highway 141 is a landmark for commuters and invites passersby to stop and explore Granger.
- Sculptural form evokes train/bike/circus wagon wheels, and creates a playful, iconic landmark and photo backdrop.
- Materials are galvanized steel or fabricated aluminum, painted red, with structural footings, and architectural lighting.
- As an extension of Centennial Park, monument can serve as an interactive play structure and rest stop along the proposed bike trail with the addition of swings, gravel surfacing, bike racks, and signage.

# Wayfinding Signs / Trough Planters



- Affordable, DIY solution for streetscape beautification, traffic barriers, and wayfinding markers can be easily replicated around town and moved as needed.
- 8' diameter and 3'x8' galvanized animal watering troughs, painted signature red and planted with flowering annuals.
- Multidirectional wayfinding sign post (painted galvanized steel) can be included at key trail intersections to indicate direction/distance to local and regional destinations, cultural amenities, and businesses.

# Crossing Sign with RRFB



- Double-sided, 14' tall bike / pedestrian crossing sign posts with push button-activated RRFB lights proposed at each side of a crossing and on a center median if applicable.
- Rectangular Rapid Flashing Beacon (RRFB) is LED, visible during daylight; can be powered by a pole mounted solar assembly or ground wire.
- Sign placement and graphic panels conform to Federal Highway Administration Manual on Uniform Traffic Devices (MUTCD).