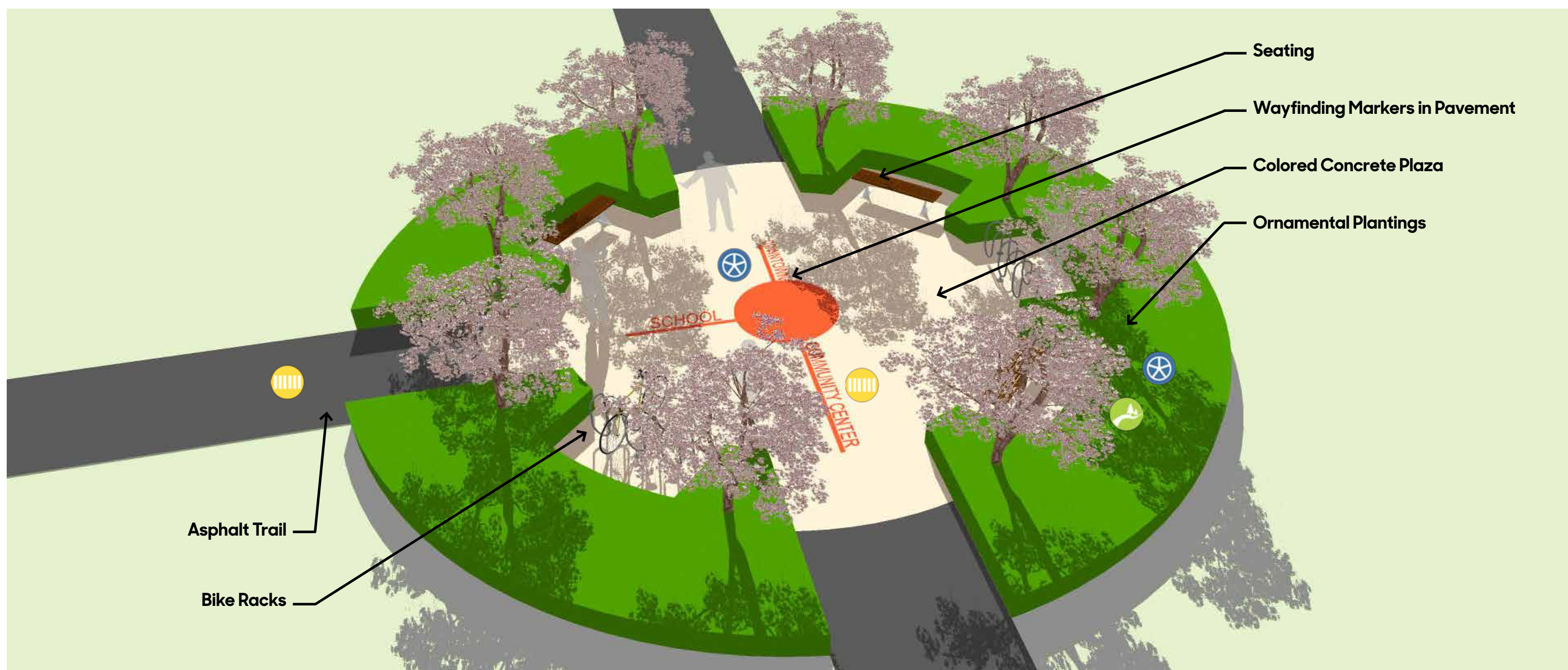


Creek Crossing + Trail Hub Plan



Trail Hub Plaza Perspective



Creek Crossing Perspective

Creek Crossing

A new bridge crossing over Oxley Creek is proposed to connect the Windcrest Park loop trail to the baseball complex to the west. This will supplement the existing crossing at State Street, providing direct access between the school and neighborhoods to the east of the creek with the community center and neighborhoods to the northwest. The approximately 60'-long prefabricated steel truss bridge would be similar to the one previously located along State Street prior to the recent creek stabilization project. Another 40' bridge is proposed over the tributary drainage way to the north, to accommodate the development of a new multipurpose trail along the length of Oxley Creek. Under the creek bridge, a series of limestone outcropping steps would provide access down to the water and protect the bridge embankments. Sited at the existing location of an ad hoc crossing built by local kids with riprap boulders, these limestone blocks would function as a secondary "stepping stone" creek crossing for adventure-based play, and could also be used as an outdoor classroom.

Trail Hub Plaza

With the introduction of a local multipurpose trail system and proposed creek crossing connecting Windcrest Park and the baseball complex, this location has been identified as a key intersection at the heart of Granger's park land. To mark this location, a concrete trail node dubbed the "Hub Plaza" is proposed as a rest stop along the trail; a new park feature that includes ornamental plantings, seating, bike racks, and signage. This plaza could be replicated throughout the community as the trail system grows, and the wheel/gear form of the paving allows for flexibility in the direction of connections to trails, sidewalks, or other park amenities. Traditional park sign panels could be included to mark destinations or provide interpretation on site-specific cultural and natural resources and history. Wayfinding text could also be superimposed onto the paving to inform trail users of destinations near and far, such as "Community Center 0.5 mi", or "Jester Park 4 mi".

Performance Icons

- Connectivity + Access**
- Safety**
- Identity + History**
- Ecology**



Creek Crossing + Trail Hub

Genus Landscape Architects

LA's: Eric Holt, ASLA, PLA | Jordan Garvey, Associate ASLA
Intern: Fan-Kai Lin

Iowa State University | Trees Forever | Iowa Department of Transportation

