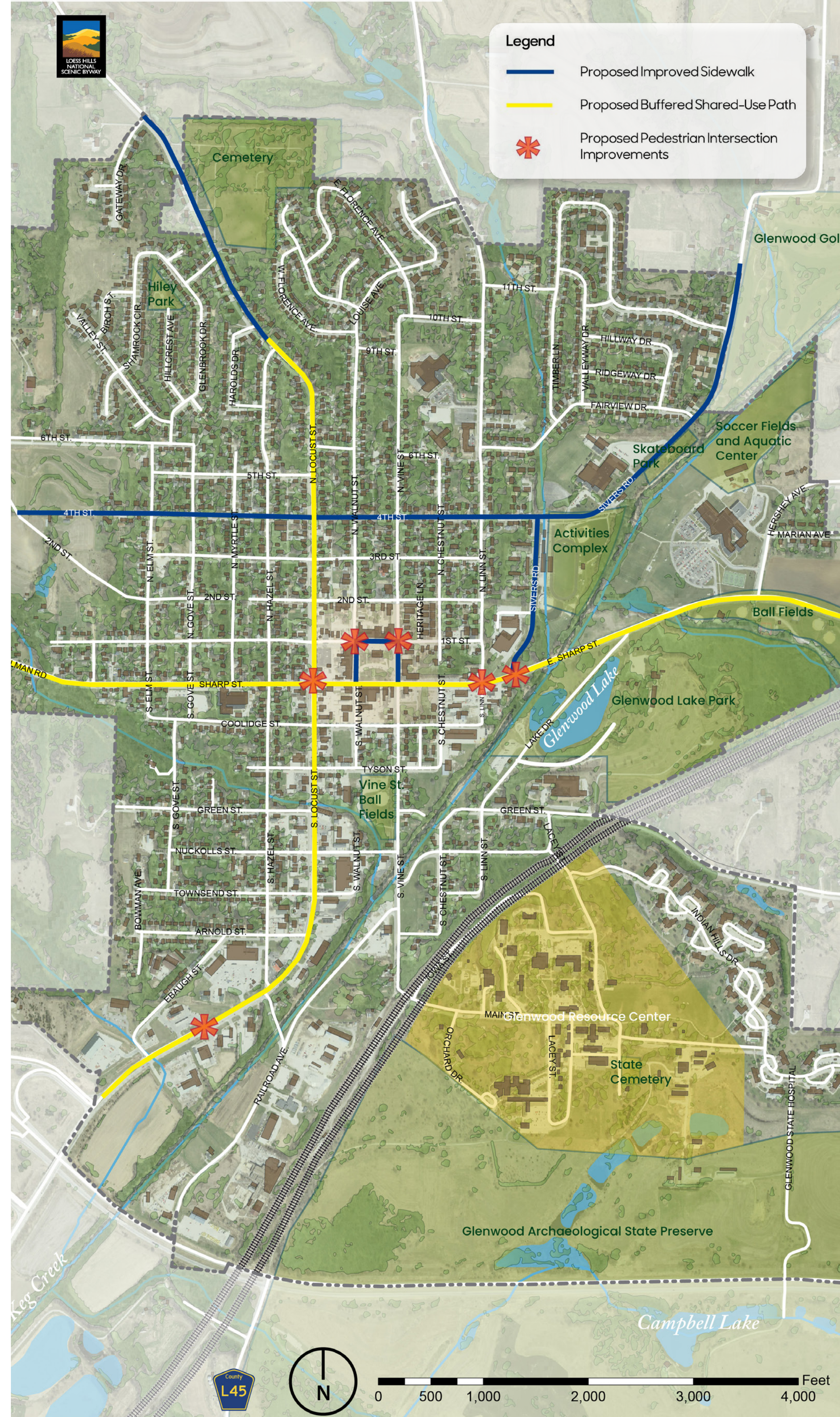


Community Connection



Existing Conditions | Locust Street



Proposed | Pedestrian Intersection Improvements



Locust Street at Dollar General

The asterisks on the map denote key areas where the pedestrian experience needs improvement. The rendering to the left shows the possibility of adding pedestrian refuge islands throughout the median on Locust Street. These refuge islands provide a protected place to stop if necessary with separation from vehicles. Adding trees to the median and a High Intensity Activated CrossWalk (HAWK) beacon signal will give pedestrians the right of way when crossing and help slow traffic speeds.

Existing Conditions | 4th Street



Proposed | Improved Sidewalk Conditions



4th Street Corridor

The sidewalks through neighborhoods are broken and rough in areas and missing in key locations that make walking to school challenging and unsafe. Addressing the sidewalk improvement locations called out on the map would create safer routes to school and other key locations by connecting missing pieces of sidewalk, enhance the pedestrian experience with landscaping and shade, and increase safety with the addition of pedestrian lighting and concrete repairs.

Existing Conditions | Sharp Street



Proposed | Buffered Shared-Use Path



Sharp Street Corridor

The buffered sidewalks called out on the map are located along Locust and Sharp Streets, which are key corridors through Glenwood. These streets have shoulders wide enough for shared-use paths with vegetated buffers to allow for multi-modal transportation adjacent to vehicular traffic. The vegetated buffer creates a barrier for the cyclists and pedestrians from vehicles while slowing traffic and beautifying the corridor.

Existing Conditions | Sharp Street and Sivers Road



Proposed | Pedestrian Intersection Improvements



Intersection of Sharp Street and Sivers Road

The rendering to the left highlights another proposed enhancement along Sharp Street. The intersection of Sharp Street and Sivers Road is highly utilized during peak school hours because it is the main access to the YMCA and the sports complex, as well as a popular route to Glenwood Community Middle School. Improved walkways, a HAWK beacon signal, and a crosswalk will improve the pedestrian experience, increase pedestrian safety, and help moderate traffic flow during peak hours.