

Sidewalk Accessibility

During discussions with community visioning focus groups many residents said they walked around town for both pleasure and transportation. These groups talked about sidewalks around town needing repairs and those with missing segments. The groups emphasized pedestrian safety as an issue.

To aid the city in prioritizing sidewalk improvements, the design team completed a cursory review of the existing conditions. The results are summarized in the photos and sidewalk accessibility plan shown on this board. The sidewalk accessibility plan also identifies the primary streets where the sidewalk improvements should be the first priority. These streets were selected based on community input from the TAB workshops and the need for access to special places within the community. These priority streets include Sycamore Avenue, Maple Street, East Main Street, South Spruce Avenue, Birch Avenue and Pine Street.

The inventory map shows a large number of insufficient sidewalks and missing sidewalk segments in Garrison. While all user groups rely on sidewalks for safe and accessible travel, it is the elderly, mobility-challenged or impaired, and school-age children who are the most impacted by the quality of the sidewalks because of their heavy reliance on walking to places within the community. A typical cross-section is shown on this board that illustrates the recommended minimum width of a sidewalk and minimum vertical and horizontal clearances.



Existing conditions: Structural issues.



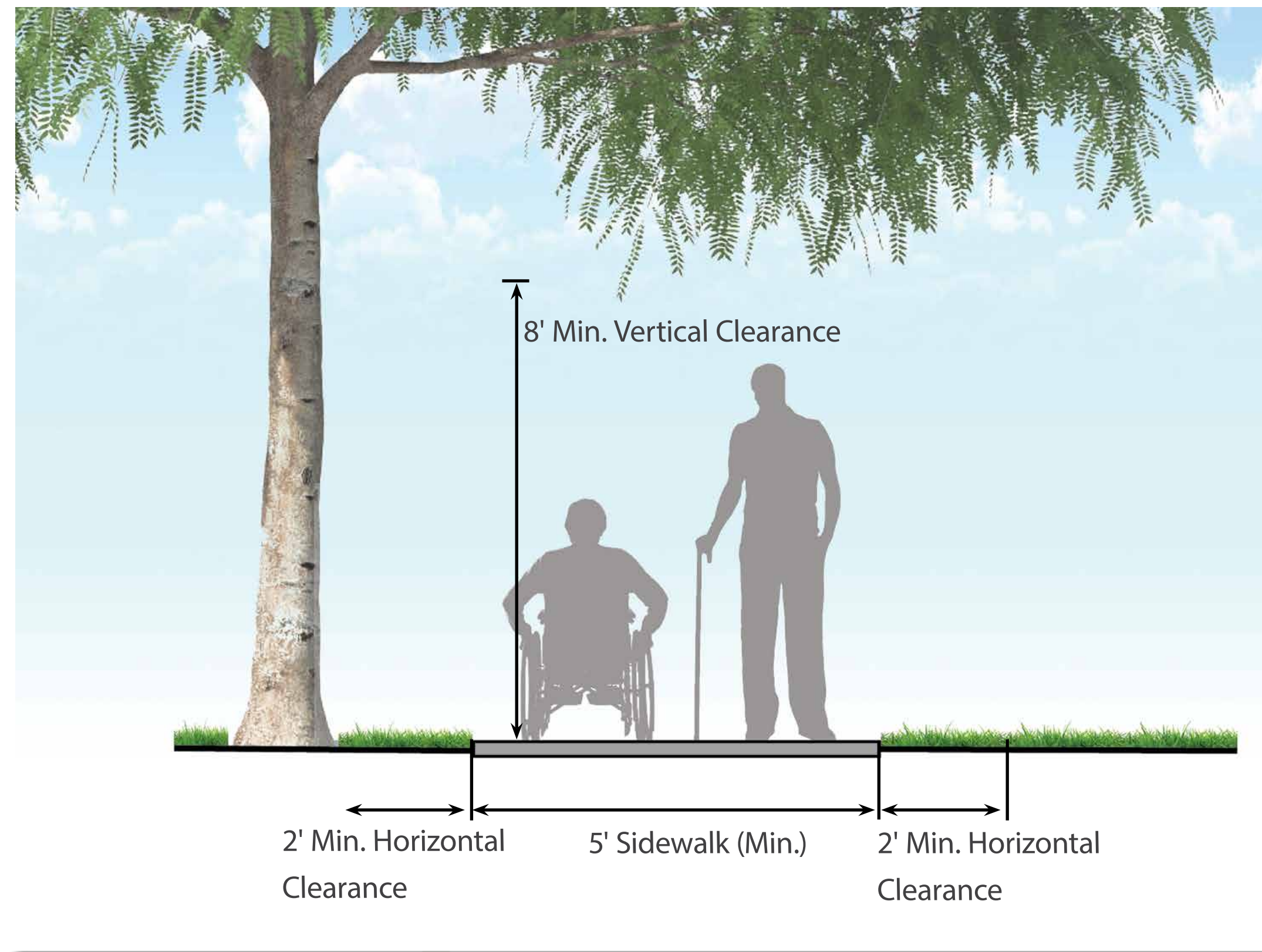
Existing conditions: Poor accessibility.



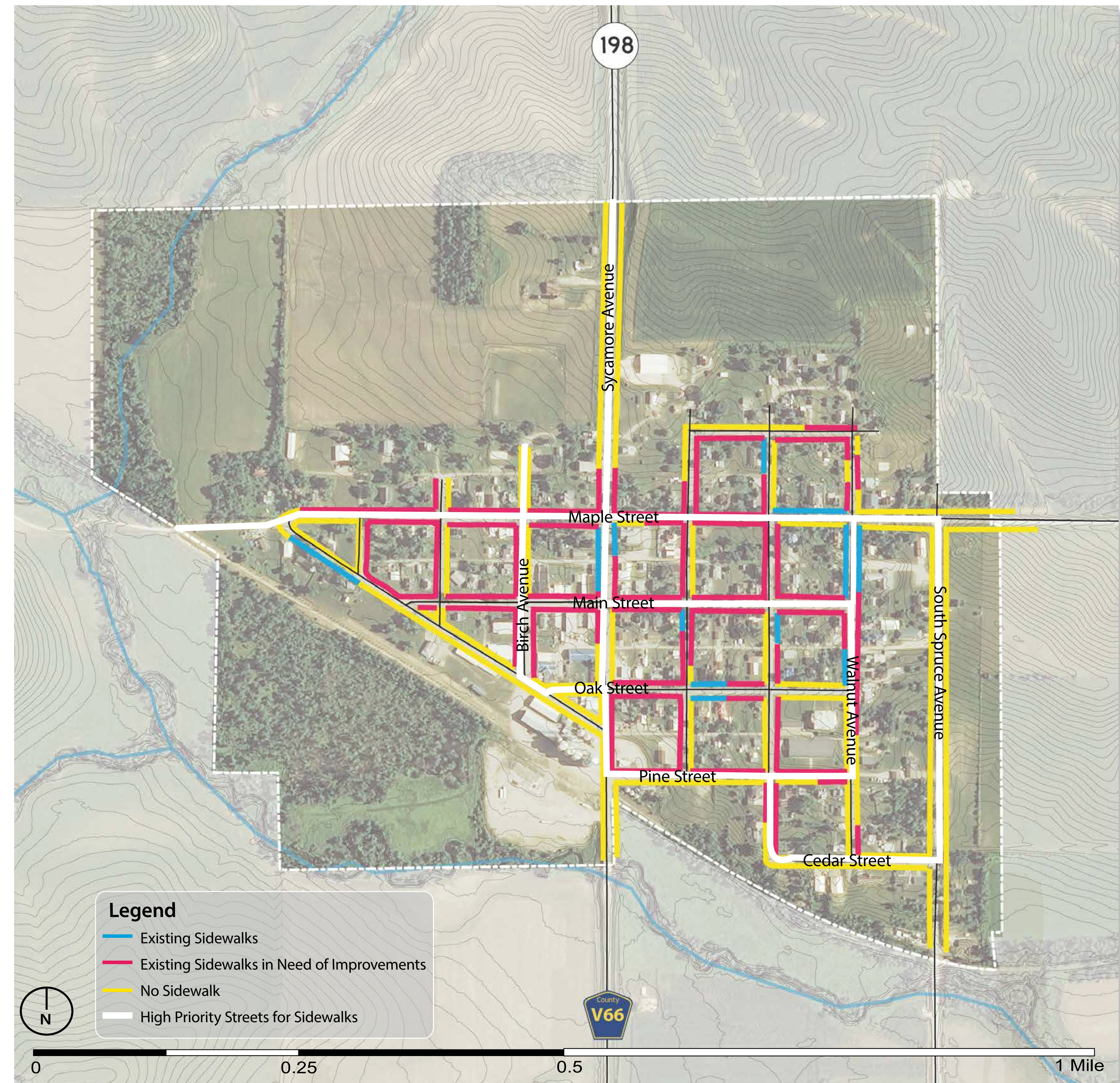
Existing conditions: Poor maintenance.



Existing conditions: Lack of safe pedestrian access to destinations.



Typical proposed sidewalk cross-section.



Sidewalk Accessibility Plan. Map Data Source: Iowa Department of Natural Resources, "Natural Resources Geographic Information Systems Library," accessed January 2016, <https://programs.iowadnr.gov/nrgislib/>.

Garrison Sidewalk Accessibility Enhancements

Landscape Architect: Meg Flenker, PLA, CPESC, CPSWQ Interns: Erika Birnbaum and Amanda Holtman - Flenker Land Architecture Consultants, LLC

Iowa Department of Transportation Trees Forever ISU Landscape Architecture Extension ISU Extension Community and Economic Development

IOWA'S
LIVING
ROADWAYS

Summer 2016