

Hero Memorial Park

During the goal setting meeting committee members requested that a memorial be designed to commemorate the service of heroes, past, present and future. Community leaders suggested the corner of Birch Avenue and Main Street on the site of the old library before it was damaged in the 2011 windstorm. The design team felt that this was an ideal spot, because the memorial would serve as an expansion of the downtown.

The school bus stop that is currently at this location is proposed to be relocated to a designated space by the new library. Refer to board 14.

The design team developed two concepts for the memorial and the space on which it is located, referred to collectively as "Hero Memorial Park." Both concepts are illustrated on this board.

As can be seen, both concepts incorporate a boulder with the Blue Star Memorial plaque that the community is currently raising funds to receive. A black granite memorial wall is incorporated into both options as well. The wall is envisioned to be approximately three-feet high and engraved with the names of local firefighters, police, veterans and other heroes that the community wishes to honor. Other elements of both concepts include statues memorializing the different areas of services recognized on the wall, seating, permeable paving, planting areas, flag poles and other site furnishings.

A native planting pallet is proposed for use in both the formal planting areas as well as the area behind the memorial that buffers it from the adjacent residences.



Existing aerial view.



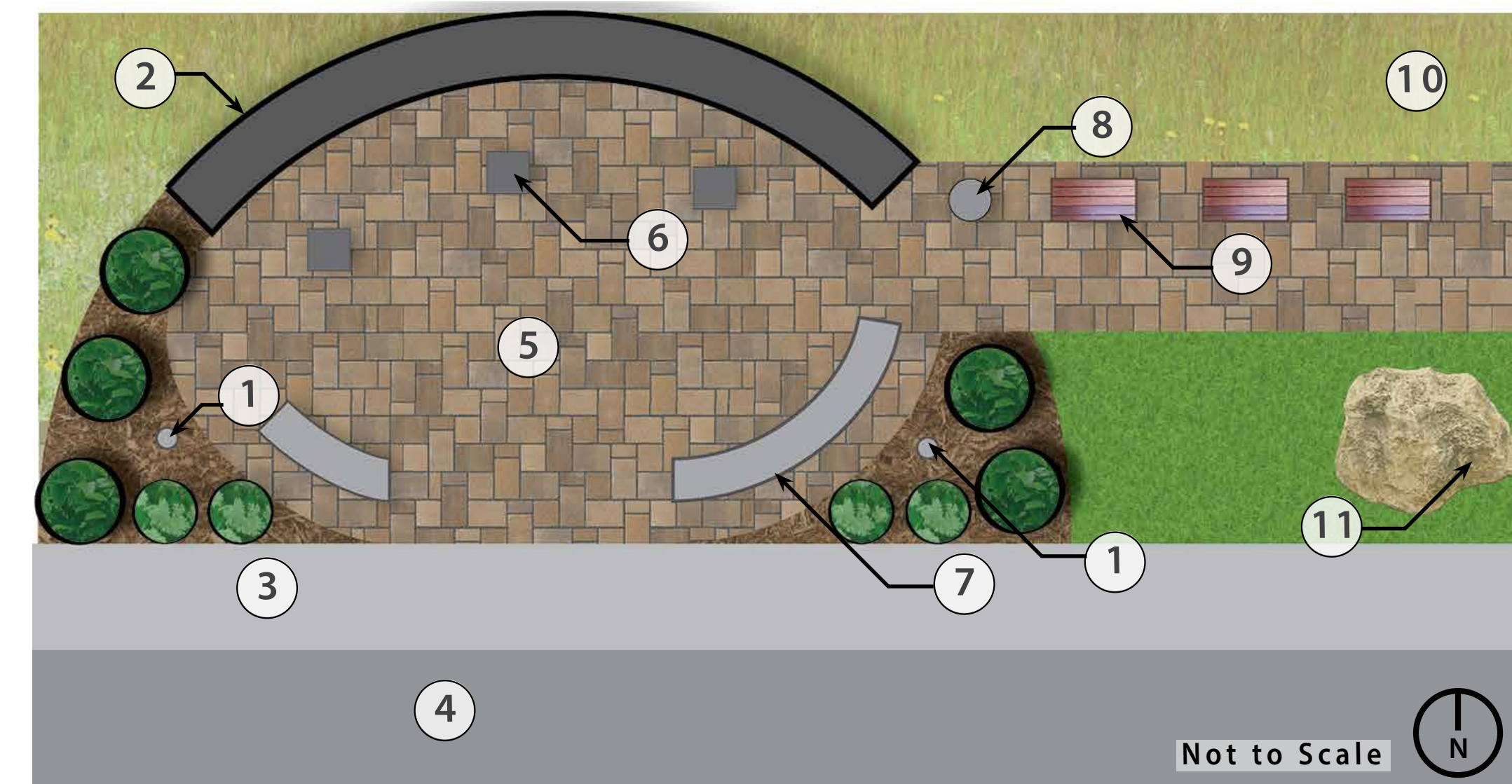
Library pre-windstorm.



Library post-windstorm.



Existing image of Hero Memorial Park site.



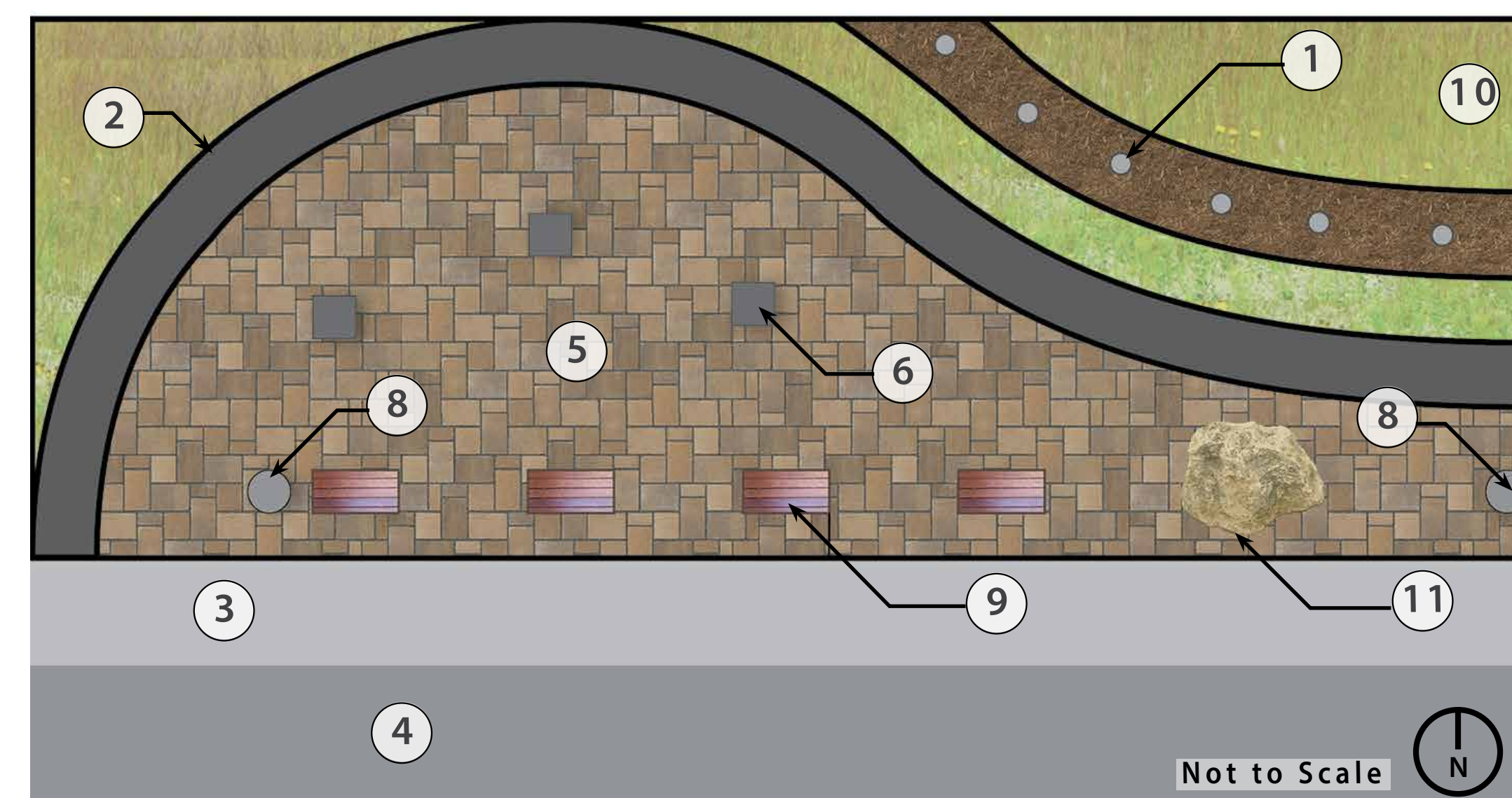
Option 1: Hero Memorial Park conceptual plan.



Option 1: Hero Memorial Park conceptual sketch.

Call-out Legend

- | | |
|--------------------|----------------------|
| ① Flag Pole | ⑦ Concrete Benches |
| ② Memorial Wall | ⑧ Trash Receptacle |
| ③ Sidewalk | ⑨ Bench |
| ④ Main Street | ⑩ Native Plantings |
| ⑤ Permeable Paving | ⑪ Blue Star Memorial |
| ⑥ Hero Statues | ⑫ Turf Grass |



Option 2: Hero Memorial Park conceptual plan.



Option 2: Hero Memorial Park conceptual sketch.

Garrison Hero Memorial Park

Landscape Architect: Meg Flenker, PLA, CPESC, CPSWQ Interns: Erika Birnbaum and Amanda Holtman - Flenker Land Architecture Consultants, LLC

Iowa Department of Transportation Trees Forever ISU Landscape Architecture Extension ISU Extension Community and Economic Development Summer 2016

