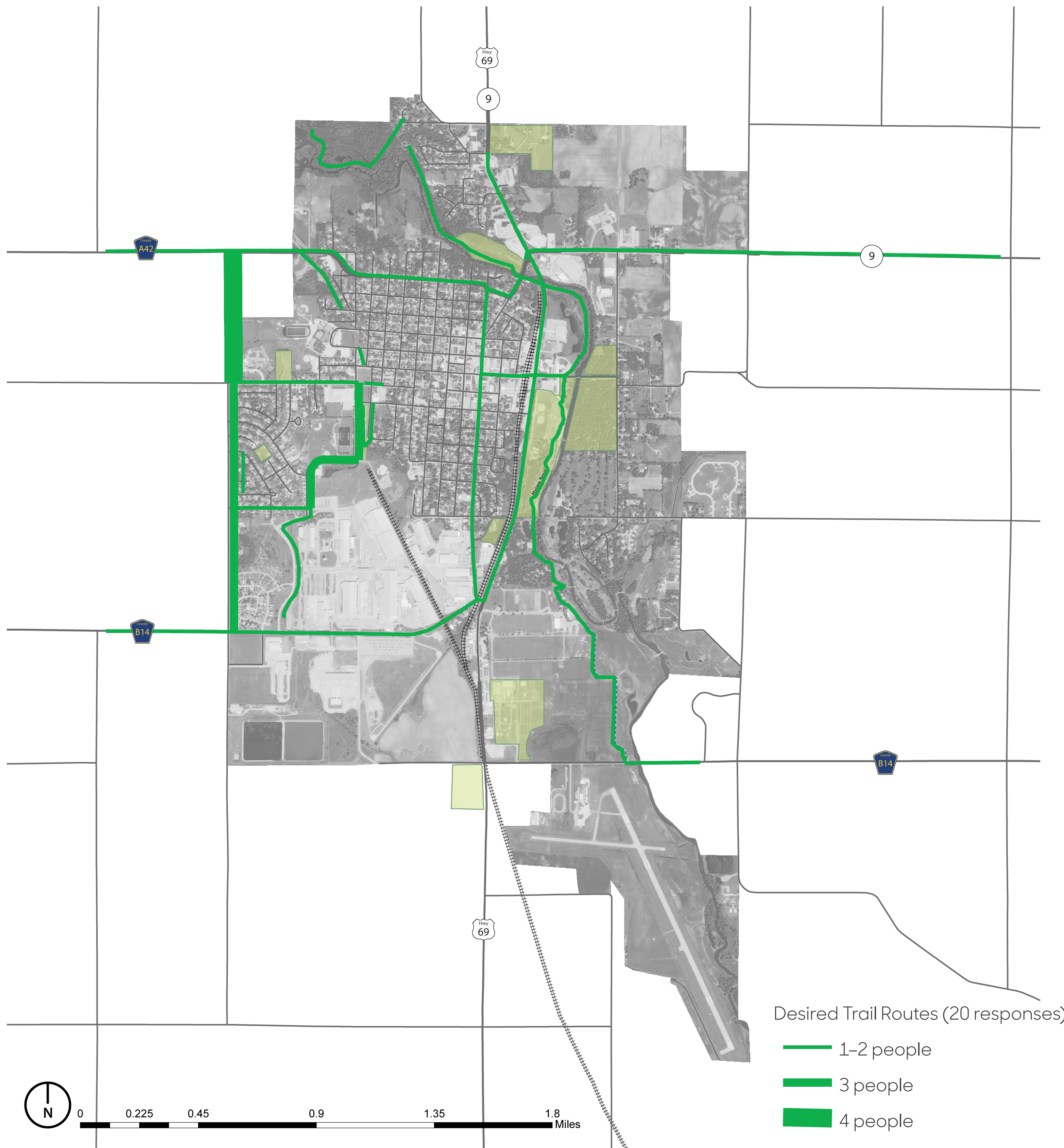


# Where People Want Trails

This map shows the desired trail routes identified by 20 survey respondents. The frequency that the routes are identified is depicted by their thickness, with most frequently identified routes being the thickest. The most popular location for a trail among survey respondents is along 160th Avenue between County Road A42 and West I Street. Other suggestions include connecting County Roads A42 and B14 with a trail down 160th Avenue, and adding a trail along John K. Hanson Drive.



Map Source: Iowa Department of Natural Resources, "Natural Resources Geographic Information Systems Library," <http://www.igsb.uiowa.edu/nrgislib/>.

# Important Trail Features

On a scale of 1 to 5, with 5 being the most important, survey participants ranked the characteristics and features that made their trail experience better. These features are categorized as either "connections" or "conditions and elements." Among Forest City participants, conditions/elements (mean value of 3.6) are more important than connections (mean value of 3.2). In terms of connections, access to natural areas and access to the trail from my neighborhood are most important with mean values of 3.6 each. Well-kept surroundings and little vehicular traffic are the most important elements (4.1 each), followed by lighting (3.8).

