



A map of Farragut highlighting and analyzing existing transportation infrastructure.

Transportation Inventory and Analysis

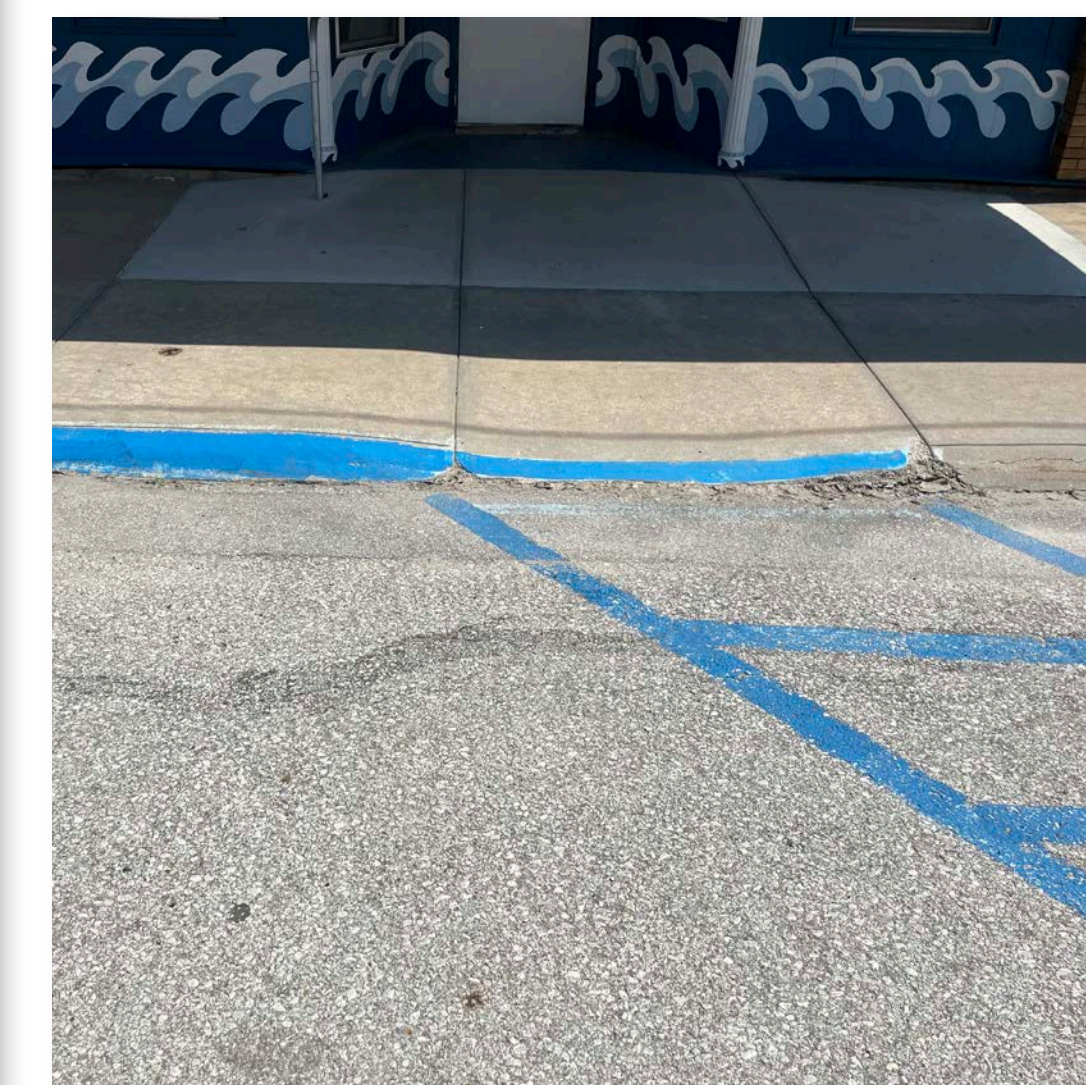
Knowledge of the transportation system in and around a community is critical for sustainable transportation enhancement planning. Farragut's transportation system includes a state highway, county roads, roadways, waterways, sidewalks, and recreational trails.

County Road M16 runs north-south through town, dividing it in half. This road experiences heavier traffic in the morning and has an issue with deer.

The visioning team coordinated with Iowa Department of Transportation (DOT) personnel, the Fremont County Engineer Assistant, and local officials to identify existing, past, and future transportation-related constraints and opportunities in the Farragut area.

Farragut has many transportation-based assets and opportunities that include Admiral Trail, Farragut City Park, and the Waterfalls Banquet Hall.

Items of concern include a need for more stop signs and safer circulation for children. There is large concern about accessibility throughout town. The community would also like to see amenities added to the trailhead and sidewalks fixed throughout the town.



A ramp in downtown is not up to current ADA standards for those with mobility limitations.



Most of the existing sidewalks in Farragut are deteriorating and need improvement.

Actives

"[On New Orleans Avenue] everybody thinks it's okay to drive whatever [speed] they want."

Mobility Challenged

"...if you're in a wheelchair, the sidewalks need to be replaced in a lot of places... we just plain need sidewalks."

Older Adults

"[We] probably could use more shade along the trail, especially here in town."

Youth

"I've nearly got [ten] hit three times by a car while riding my bike on the street."

Steering Committee

"...when you cross the trail right up by where the train tracks were, the sidewalk's a mess."

Community concerns about aspects of Farragut's transportation systems.

Farragut Transportation Inventory

Jeffrey L. Bruce & Company LLC

LAs: David Stokes PLA, ASLA, Lara Guldenpfennig PLA, ASLA
Interns: Abby Scott, Andrea Fager

Iowa State University | Trees Forever | Iowa Department of Transportation

