

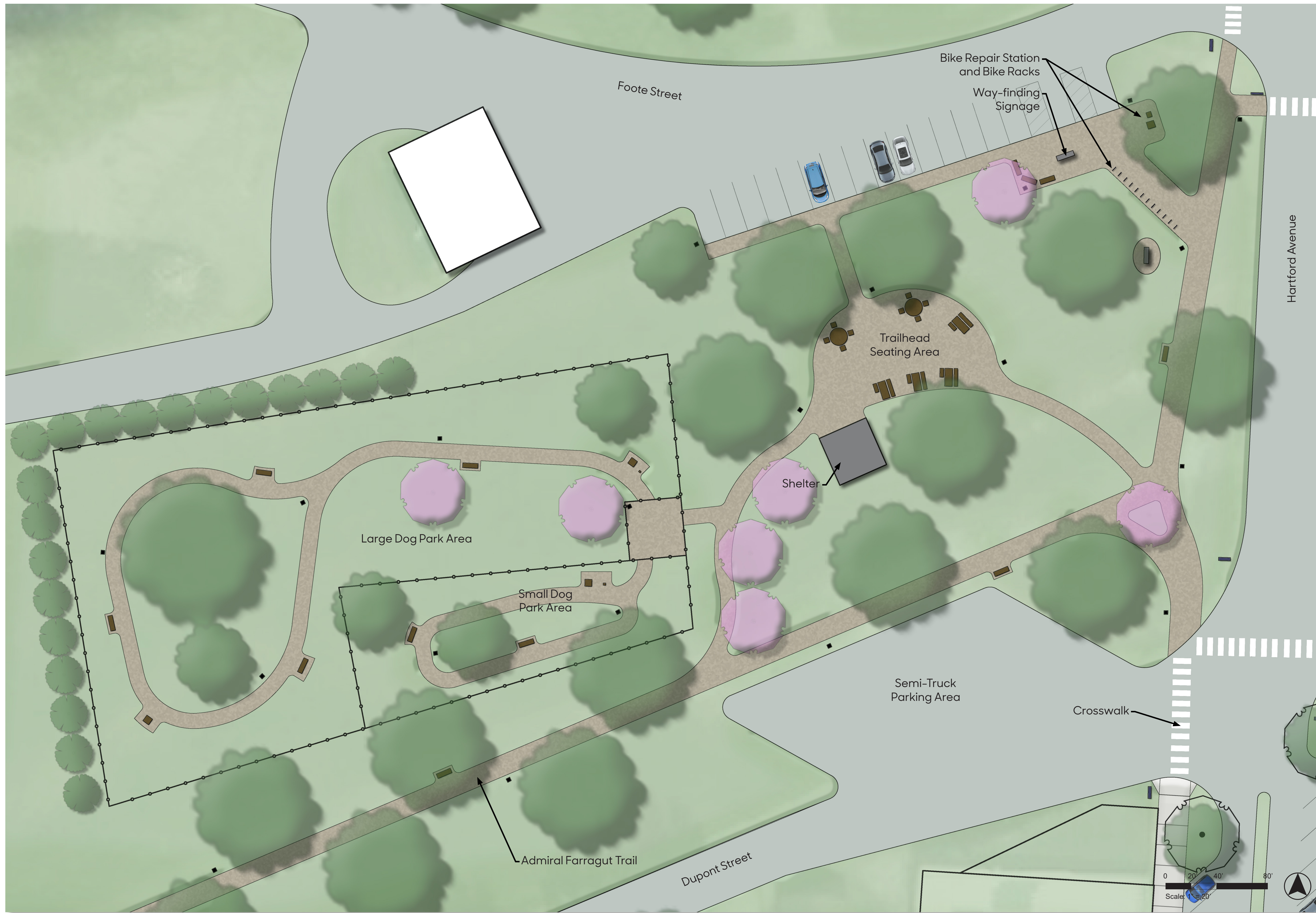
Hartford Avenue Trailhead

Farragut's primary trail corridor in town is in need of a well-defined trailhead with park-like amenities.

The Hartford Avenue trailhead provides needed spaces such as a large trailhead seating area, a bike parking and repair area, a small dog park area, and a large dog park area.

For out-of-town users wanting to access the trail in Farragut, there is a nice paved parking area (along Foote Street) on the north side of the trailhead space.

Additional amenities include seating nodes and lighting along the trail, an open-air shelter, and a better defined parking area for tractor-trailers.



Proposed improvements at Hartford Avenue Trailhead.



Dog park amenities for both large and small dogs.



Trailhead seating area with open shelter gathering area.

Farragut Hartford Avenue Trailhead



Jeffrey L. Bruce & Company LLC

LAs: David Stokes PLA, ASLA, Lara Guldenpfennig PLA, ASLA
Interns: Abby Scott, Andrea Fager

Iowa State University | Trees Forever | Iowa Department of Transportation

