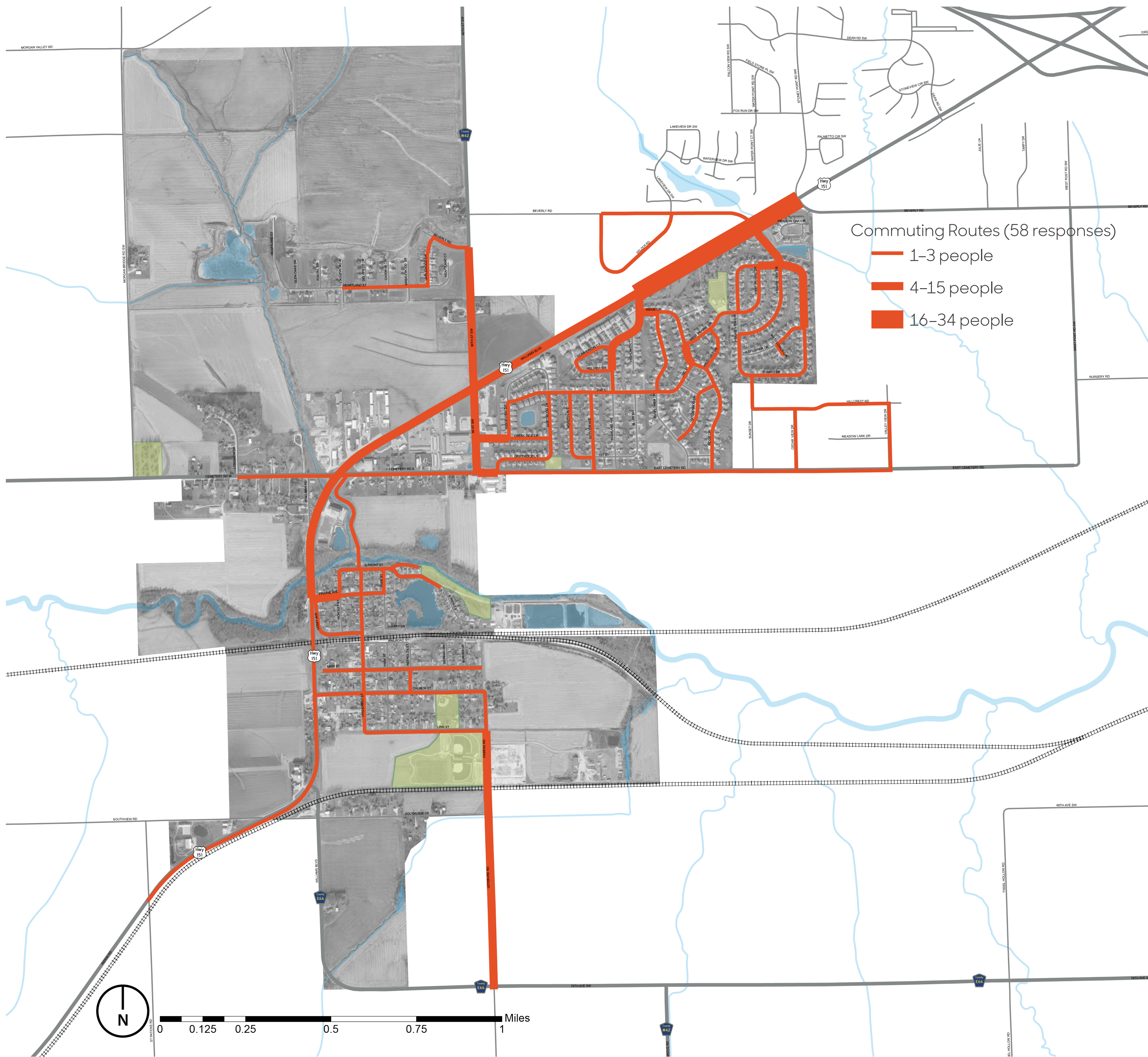


# How They Get There

This map shows the commuting routes identified by 58 survey respondents. The frequency that the routes are used is depicted by their width, with most frequently used routes being the thickest. The primary commuting corridor in Fairfax is Highway 151 to the north, presumably because many commuters work in Cedar Rapids. A number of people also travel north-south on Fairfax Road/Lefebure Road SW. Other frequently traveled streets that feed into various neighborhoods include 80th Street SW, Prairie View Drive, Highland Avenue, Creekside Drive, and East Cemetery Road.

The circulation patterns that emerge when routes for biking, walking, and commuting are overlaid suggest suitable types of transportation enhancements. For example, where pedestrian and vehicular traffic intersect, such improvements could include creating better visibility, defining crossing points, or improving signage.



# Why They Go That Way

On a scale of 1 to 5, with 5 being the most important, survey participants ranked the characteristics and features that factored into their choice of commuting route. Among Fairfax participants, time to destinations is the most important factor, with a mean value of 4.77. Other reasons such as safety, avoiding gravel, and difficulty making left turns (4.67) are the second most important factor determining commuting routes. Avoiding drifting snow, ice, water, etc. is also considered important, with a mean value of 4.07. Avoiding vehicular traffic is somewhat important with a mean value of 3.98. Scenic views, seasonal beauty, and avoiding neighborhoods are not critical factors in determining commuting routes.

