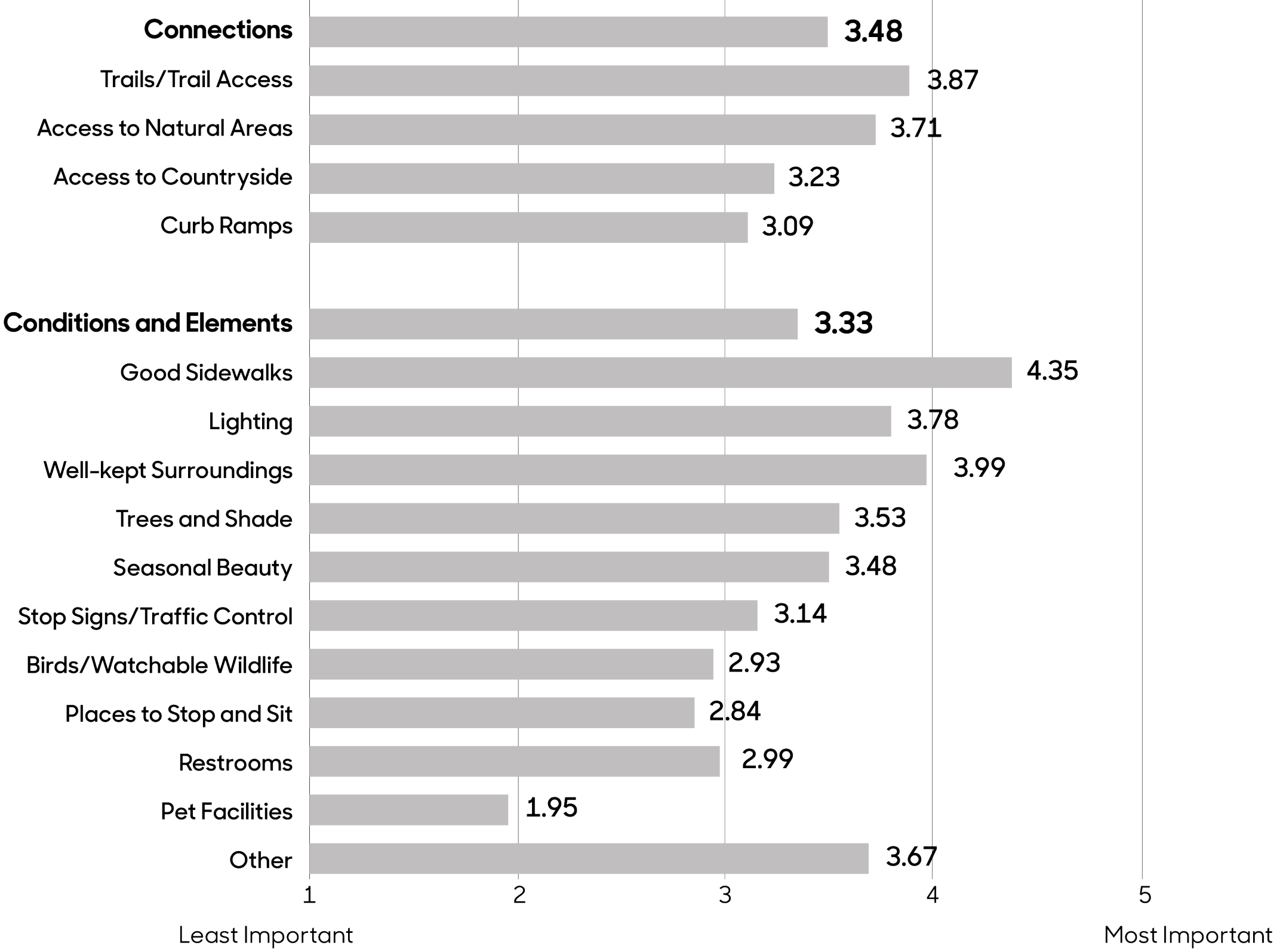
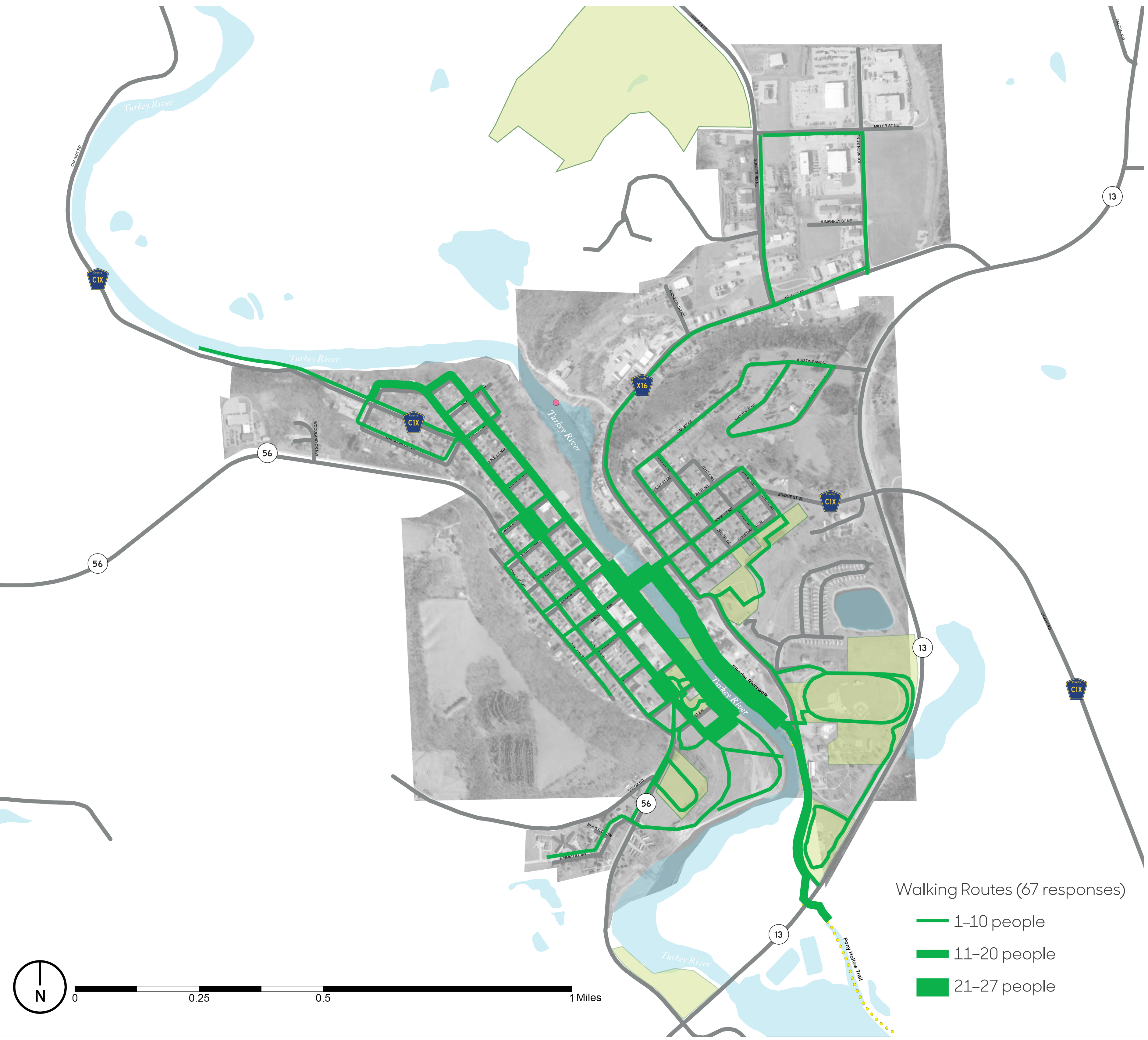


Where They Walk

This map shows the walking routes identified by 67 survey respondents, three of whom were self-selected high school students who completed the survey. The frequency that the routes are used is depicted by their width, with most frequently used routes being the thickest. Survey respondents indicated that they walk primarily along the river walk on either side of the Turkey River. People also walk on the Pony Hollow Trail. Some respondents also indicated that they walk on the streets of Elkader, with the most frequently walked streets in town being Main and 1st Streets. The most heavily traveled segment of North 1st Street is the block where the high school is located.

Why They Go That Way

On a scale of 1 to 5, with 5 being the most important, survey participants ranked the characteristics and features that made their walking experience better. These features are categorized as either "connections" or "conditions and elements." Among Elkader participants, connections are of slightly more important than conditions/elements, with mean values of 3.48 and 3.33, respectively. In terms of connections, access to trails is most important with a mean value of 3.87. Good sidewalks (4.35) are the most important element to walkers, followed by well-kept surroundings (3.99) and lighting (3.78). Other reasons such as well-maintained roads and sidewalks are important to residents.



Map Source: Iowa Department of Natural Resources, "Natural Resources Geographic Information Systems Library," <http://www.igsb.uiowa.edu/nrgislib/>.