

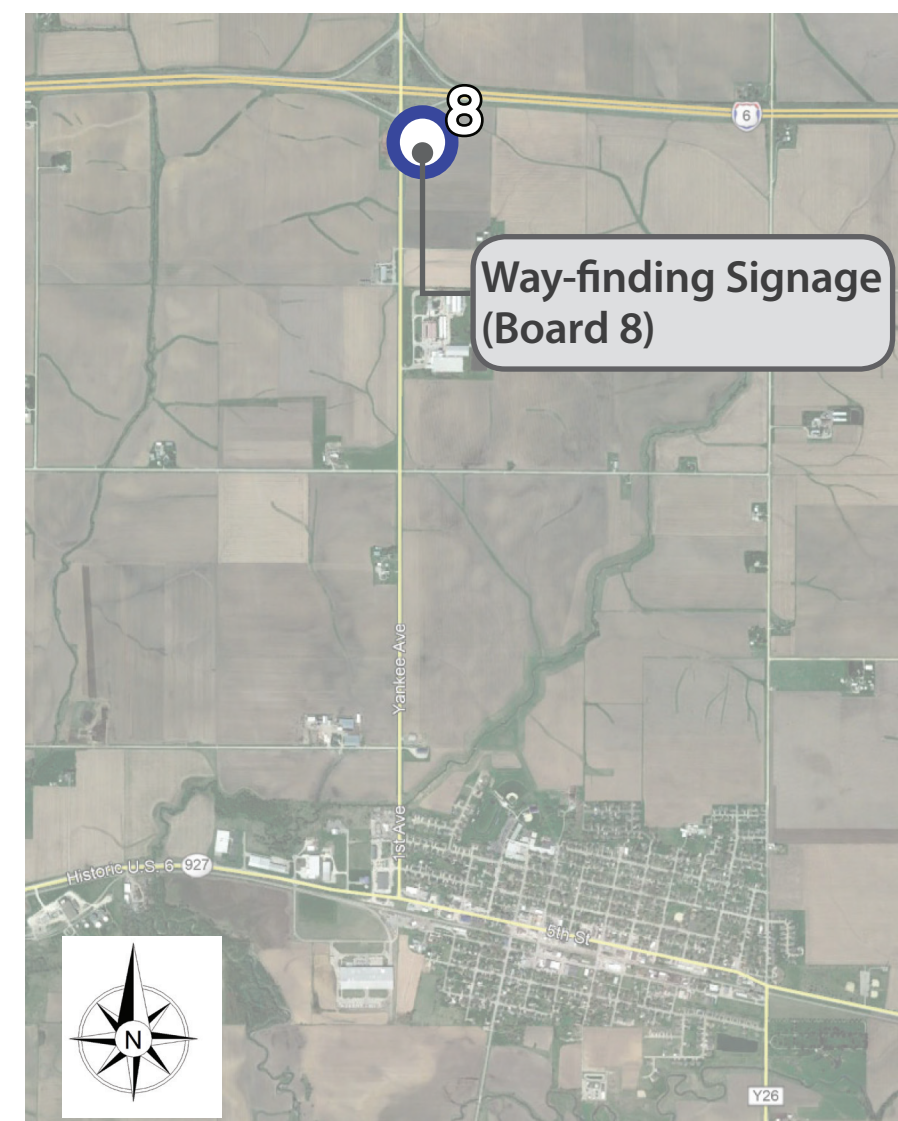
Concept Overview

The community visioning process proposes solutions for areas along transportation corridors where safety, circulation, connectivity, and visual enhancements are desirable. Part of this process also addresses the accessibility needs of the residents, such as providing safe and accessible pedestrian paths and walkways to connect special places within a community.

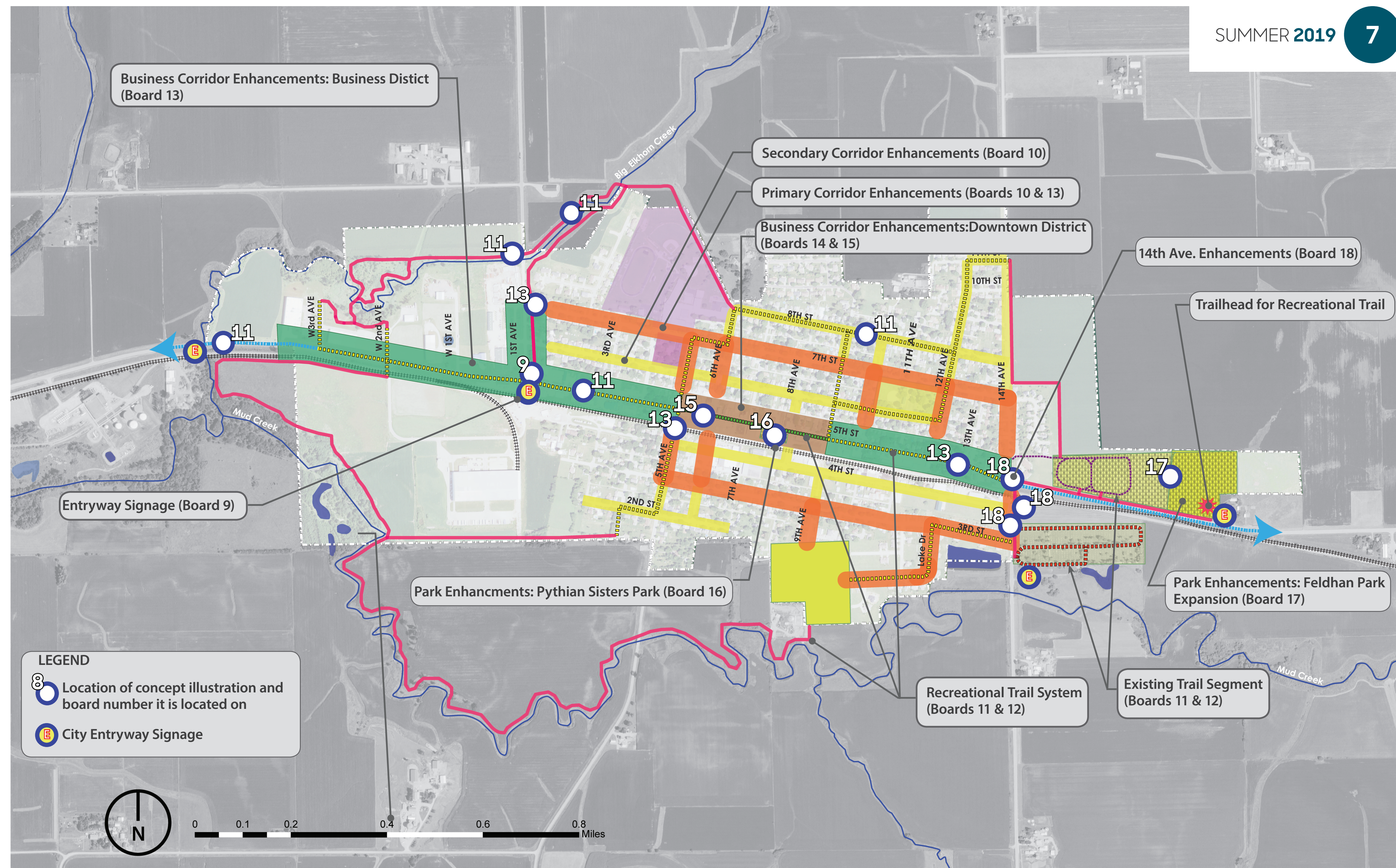
The concept plan to the left is based on Durant resident input and brings together their ideas, goals, and visions for improvements. The goal of the concept plan is to integrate these into a cohesive plan that can be implemented over time as funding and other resources become available. This long-term visioning and planning process is essential for a community to be able to provide sustainable, functional, and beneficial improvements that are holistic and provide them with the best return on investment.

After reviewing the results of the inventory and analysis of community resources, surveys, and focus groups, the Durant community visioning steering committee set goals to help them realize their community vision.

Following the goal-setting process, the design team facilitated a conceptual design workshop to provide community members with concept visualizations and the opportunity to interact with the design team and steering committee and provide their feedback. Based on the comments received, the design team refined and prepared additional concepts, which are illustrated in these sets of boards.



The above map shows the I-80 Exit to Durant. Not to scale.



Master Concept Plan

Proposed Concepts (by subject) and Board Location

- Way-finding Signage Refer to Board 8
- Entryway Signage..... Refer to Board 9
- Sidewalks & Lighting..... Refer to Boards 10, 12-15
- Recreational Trail System..... Refer to Boards 11-12
- Business Corridor Enhancements..... Refer to Boards 13-15
 - Business District (Board 13)
 - Downtown District (Boards 14 & 15)

- Park Enhancements..... Refer to Boards 16-17
 - Pythian Sisters Park (Board 16)
 - Feldhan Park (Board 17)
- Intersection and Sidewalk Safety..... Refer to Board 19

Durant Concept Plan Overview

Flenker Land Architecture Consultants, LLC

Landscape Architect: Meg K. Flenker, PLA, ASLA, CPESC, CPSWQ
 Interns: Haoyue (Karma) Yang and Jue Jue (JJ) Wai Hin Thaw
 Iowa State University | Trees Forever | Iowa Department of Transportation

