



Legend

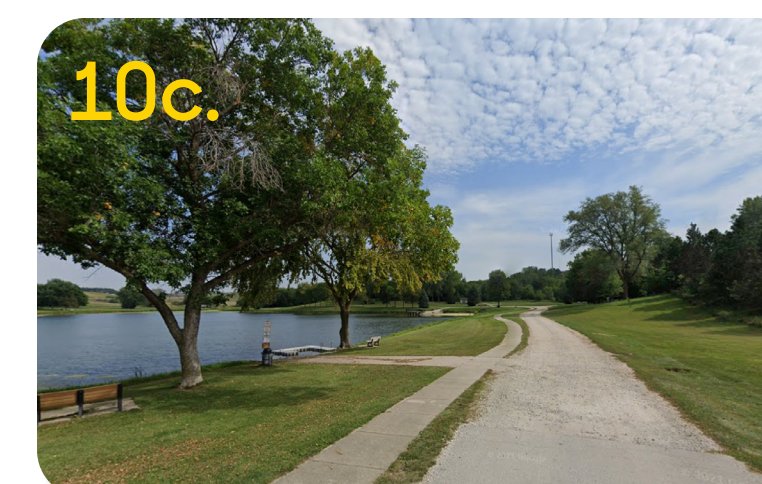
- Proposed Trail
- Existing Trail
- Trailhead Signage
- Roadway
- Point of Interest
- Green Space
- City Limits
- Plan Enlargement

Connecting Key Destinations Through Trails

Participants from both the focus groups and design workshop expressed a significant demand for a developed network of trails. The proposed trail layout shown on the left was created using survey information about frequent bicycle and pedestrian routes taken through town, community input from the workshop, and focus group feedback highlighting key destinations for people walking in Dunlap.



Sports Complex existing condition



Pleasant View Park existing condition

The two locations in town most frequented by pedestrians—the Sports Complex and Pleasant View Park—become established trail heads with designated parking. The trails extend from these base points to connect to significant locations including the Boyer Valley Schools, the golf course, and the major businesses on Iowa Avenue. The trail also creates a walking loop around the perimeter of town, measuring 4.5 miles in total distance.

In addition to creating a trail map, the design team also explored various options for graphics and way-finding signage for the trail system. The image below shows a simple logo design with the "Ride the Dun-Loop" slogan, which would be adaptable to a variety of signage types and scales.



Trailhead branding design opportunity

Dunlap Trail Development

RDG Planning & Design
 LA: Bruce Niedermyer, PLA, ASLA, LEED AP
 Intern: Olivia Bolton
 Iowa State University | Trees Forever | Iowa Department of Transportation



Safe Route between Sports Complex and School



Rendered view of the trail, looking away from the Sports Complex toward 10th Street

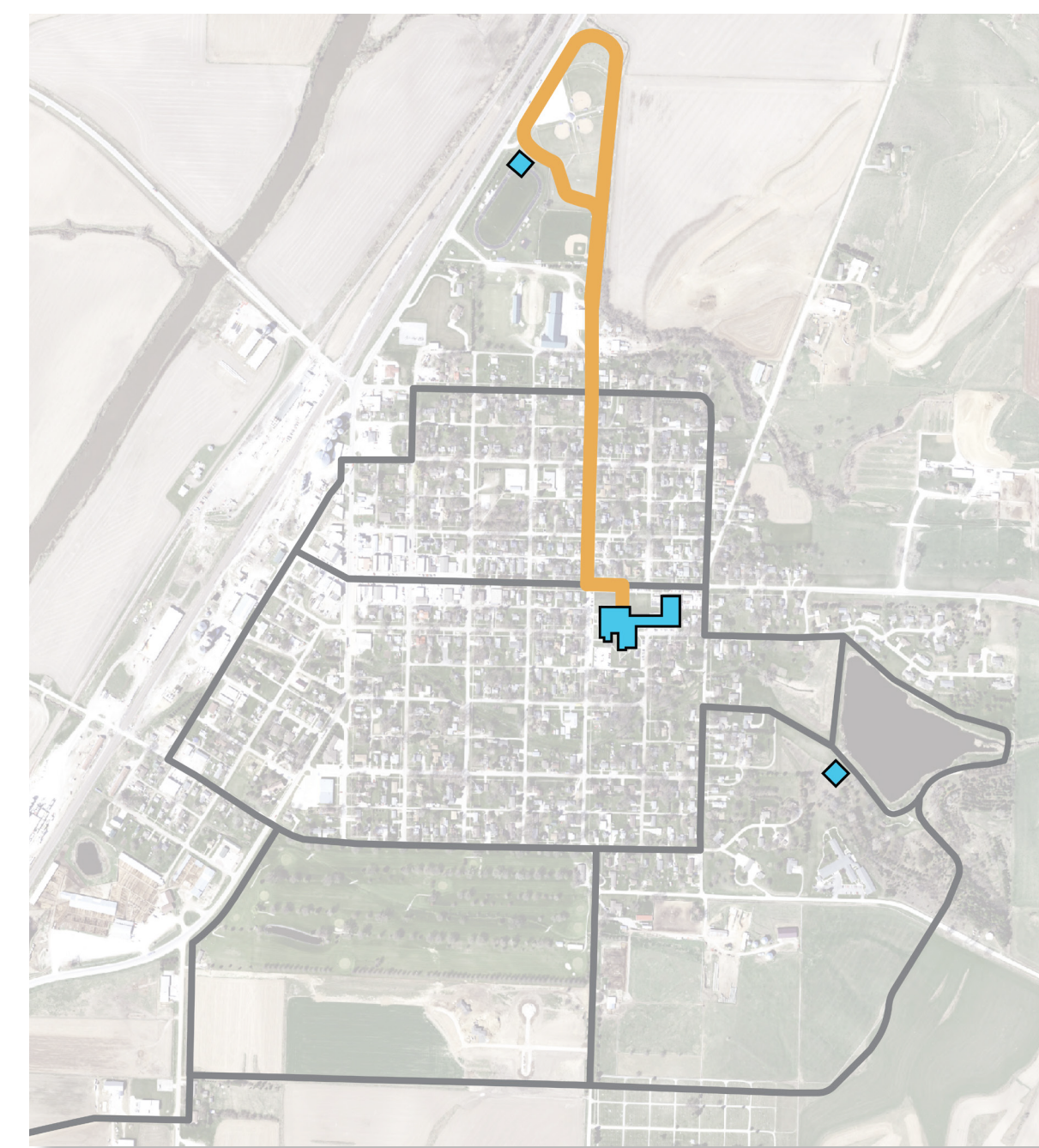
View: Crossing 10th Street

The Youth Sports Complex is most frequently accessed by students walking from Boyer Valley Schools. The plan on the far left provides a detailed view of the trail's path around the ball fields and a potential location for trailhead signage.

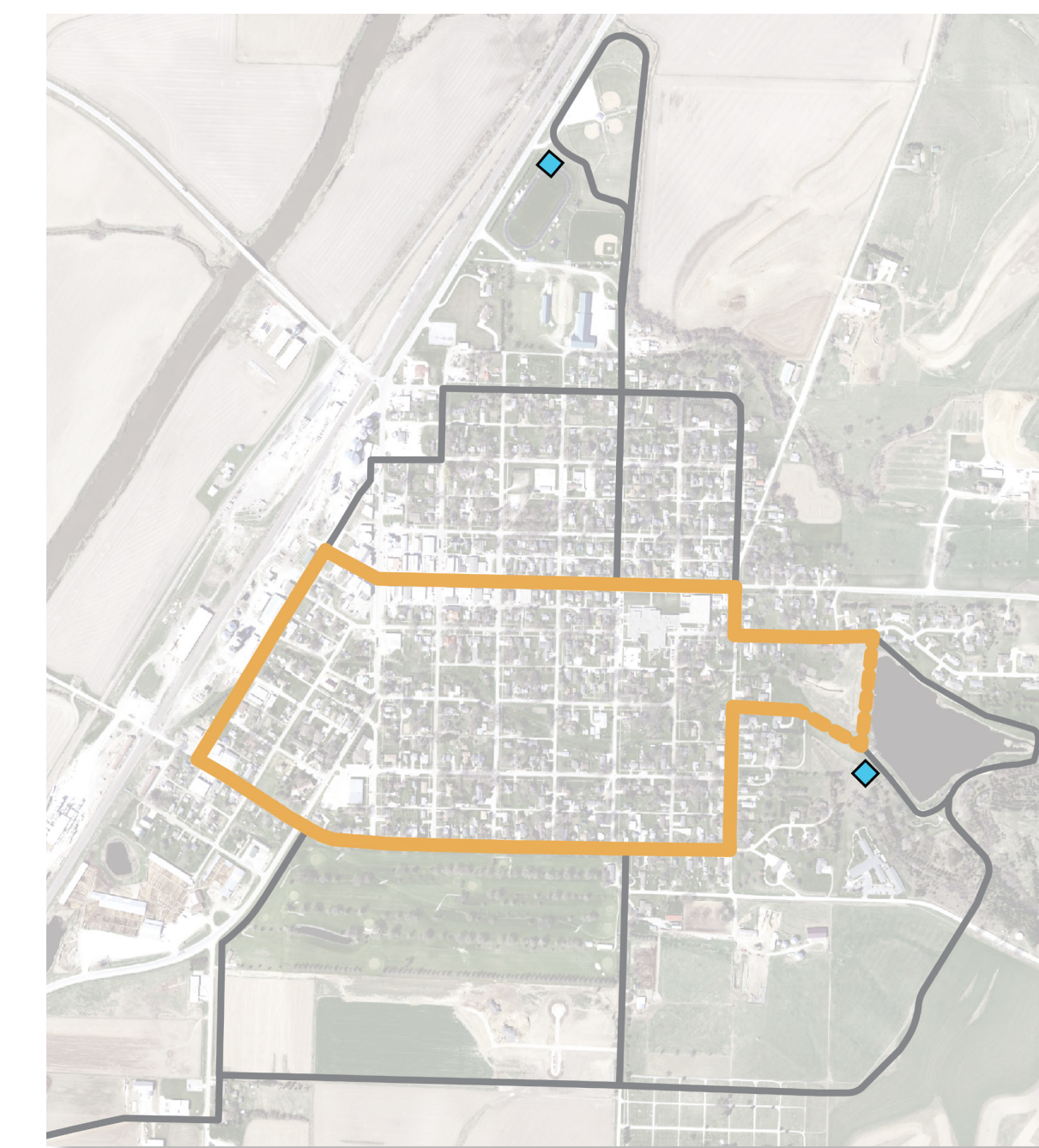
The rendering on left highlights the designated crossing to leave the sports complex and safely walk to North 10th Street. The trail leads south on the most direct path to the school. To address safety concerns, the city can implement safe crossing strategies at the three intersections between the sports complex and the school.

The graphics below measure the overall distances of various loops in the trail network. Through mile markers, the city can mark specific trail routes and distances for various community events and purposes.

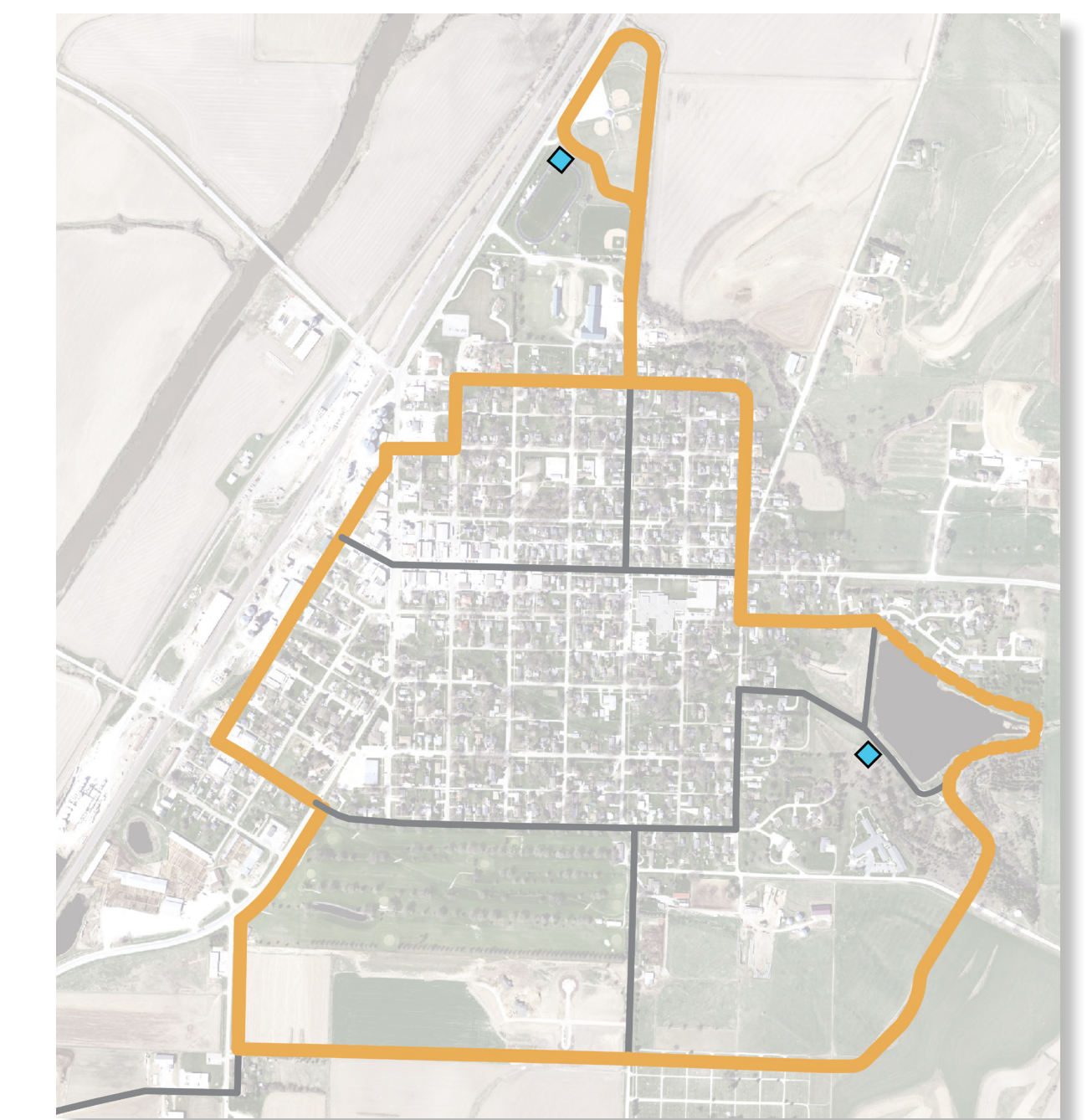
Intersecting Trails Create a Wide Variety of Paths and Distances



School to Complex: 1.0 Mile



Short Loop: 2.25 Miles



Full Loop: 4.5 Miles

Connecting to Existing Pathways



Rendered view of the trailhead at Pleasant View Park

View: Path to Playground

Many respondents from the ISU Transportation Survey and focus groups stated that they prefer to walk and bike around the loop at Pleasant View Park. To reflect the public's usage, this design officially designates the park as a trailhead in addition to the Sports Complex. The rendering above proposes an expanded sidewalk, paved parking, and trailhead signage that graphically complements the city's branding. New paths branch off of the current loop to connect pedestrians to various destinations across Dunlap.

Trail users would additionally benefit from amenities such as bike racks to encourage cycling, benches placed at regular intervals to provide resting areas, and area lighting to improve evening and night visibility.

RADEAN™ Arm Mount Area Luminaire, Lithonia Lighting



Ride bike rack, Landscape Forms

Generation 50 bench, Landscape Forms

Dunlap Pleasant View Park Trailhead

RDG Planning & Design

LA: Bruce Niedermyer, PLA, ASLA, LEED AP

Intern: Olivia Bolton

Iowa State University | Trees Forever | Iowa Department of Transportation

