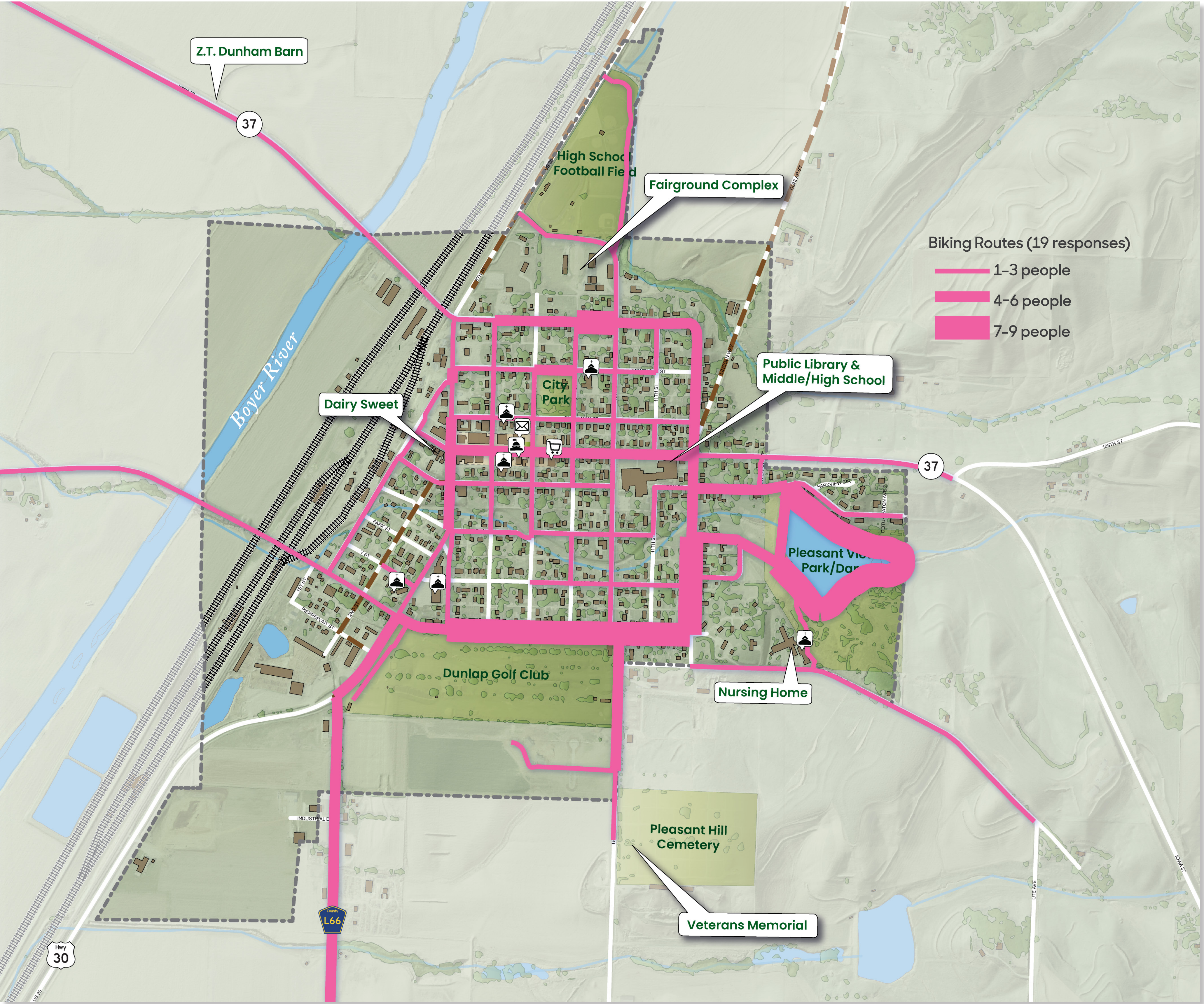


Where They Bike

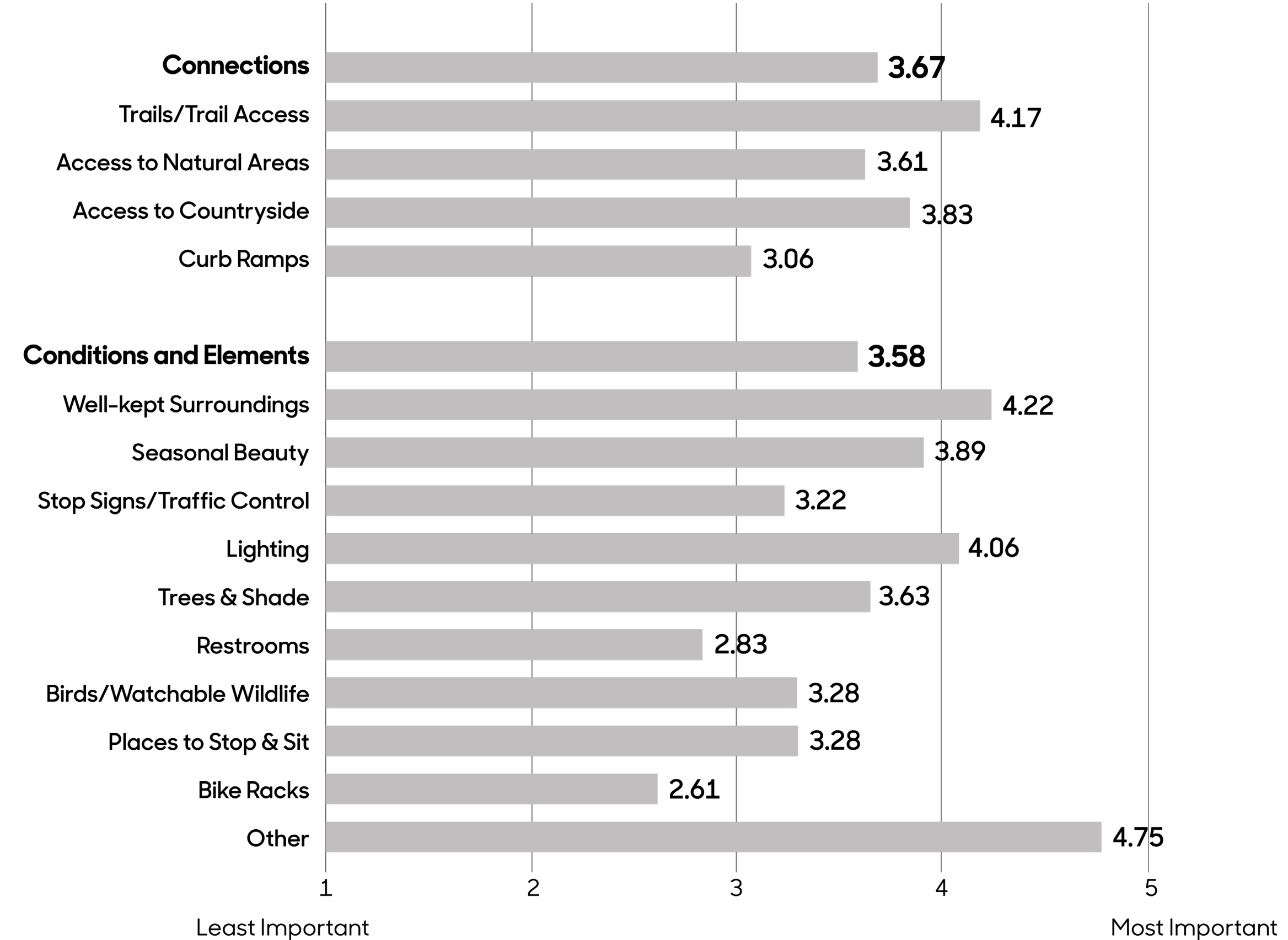
This map shows the biking routes identified by 35 survey respondents. The frequency that the routes are used is depicted by their width, with most frequently used routes being the thickest. Like walkers, bikers most often use the paved trail at Pleasant View Park. Popular street routes among cyclists include Eaton, Eagle, and 12th, and Remsen Streets. Iowa Avenue is also fairly popular. Some people bike out of town on County Road L66 to the south or to the northwest along Highway 37. A few riders bike to the youth sports complex.



Map Source: Iowa Department of Natural Resources, "Natural Resources Geographic Information Systems Library," <http://www.igsb.uiowa.edu/nrgislib/>.

Why They Go That Way

On a scale of 1 to 5, with 5 being the most important, survey participants ranked the characteristics and features that made their biking experience better. These features are categorized as either "connections" or "conditions and elements." Dunlap participants consider connections more important than conditions/elements, with mean values of 3.67 and 3.58, respectively. Access to trails is the most important connection to survey respondents with a mean value of 4.17. In terms of conditions/elements, other factors—off-street trails, avoiding vehicular traffic, and smooth surfaces—are most important (4.75) followed by well-kept surroundings (4.22), and lighting (4.06). Seasonal beauty (3.89) and trees and shade (3.63) are also desirable elements among cyclists.



Dunlap Biking Routes

Transportation Behavior and Needs Survey

Julia Badenhop, Sandra Oberbroeckling, Chad Hunter

Iowa State University | Trees Forever | Iowa Department of Transportation

