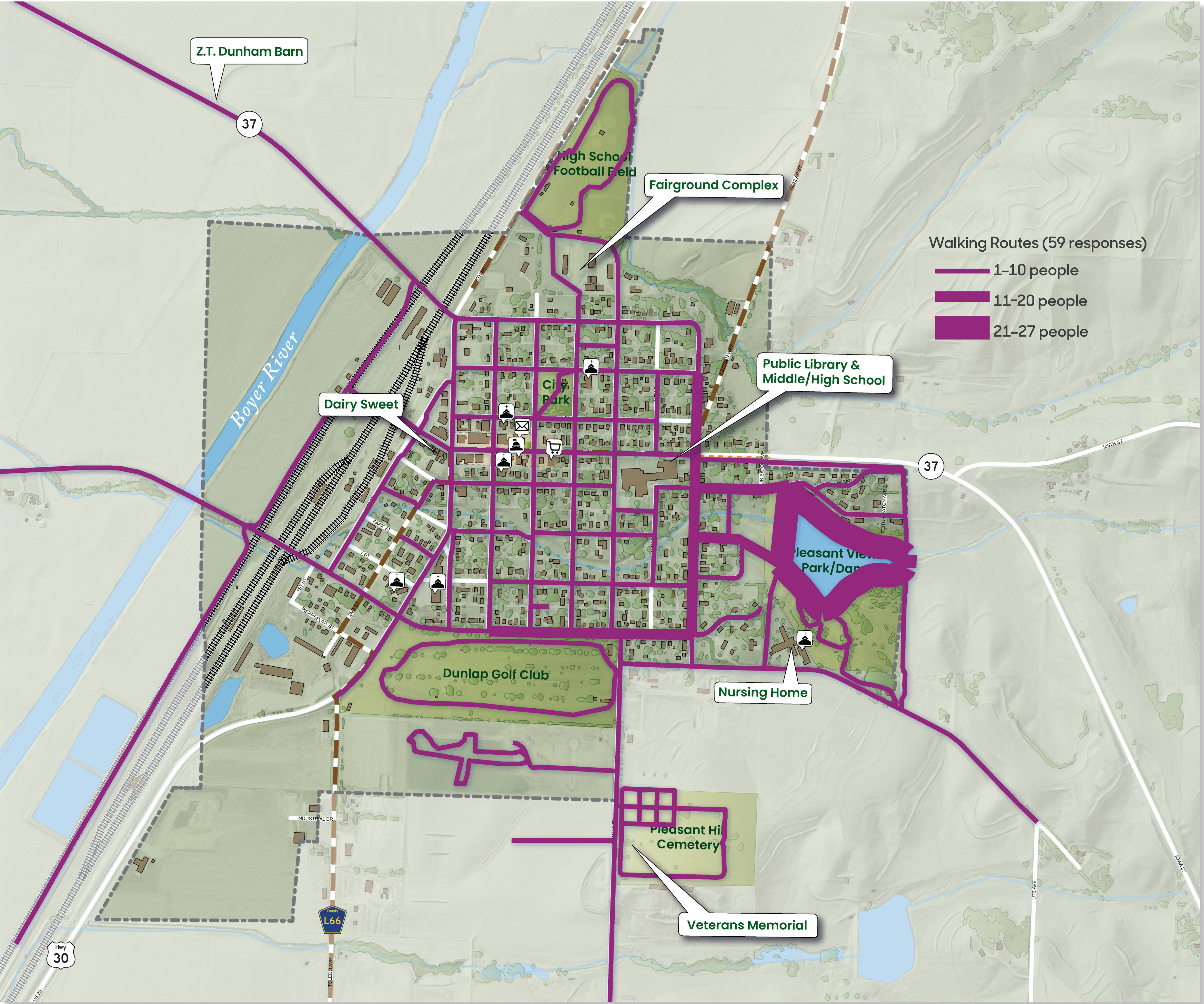


Where They Walk

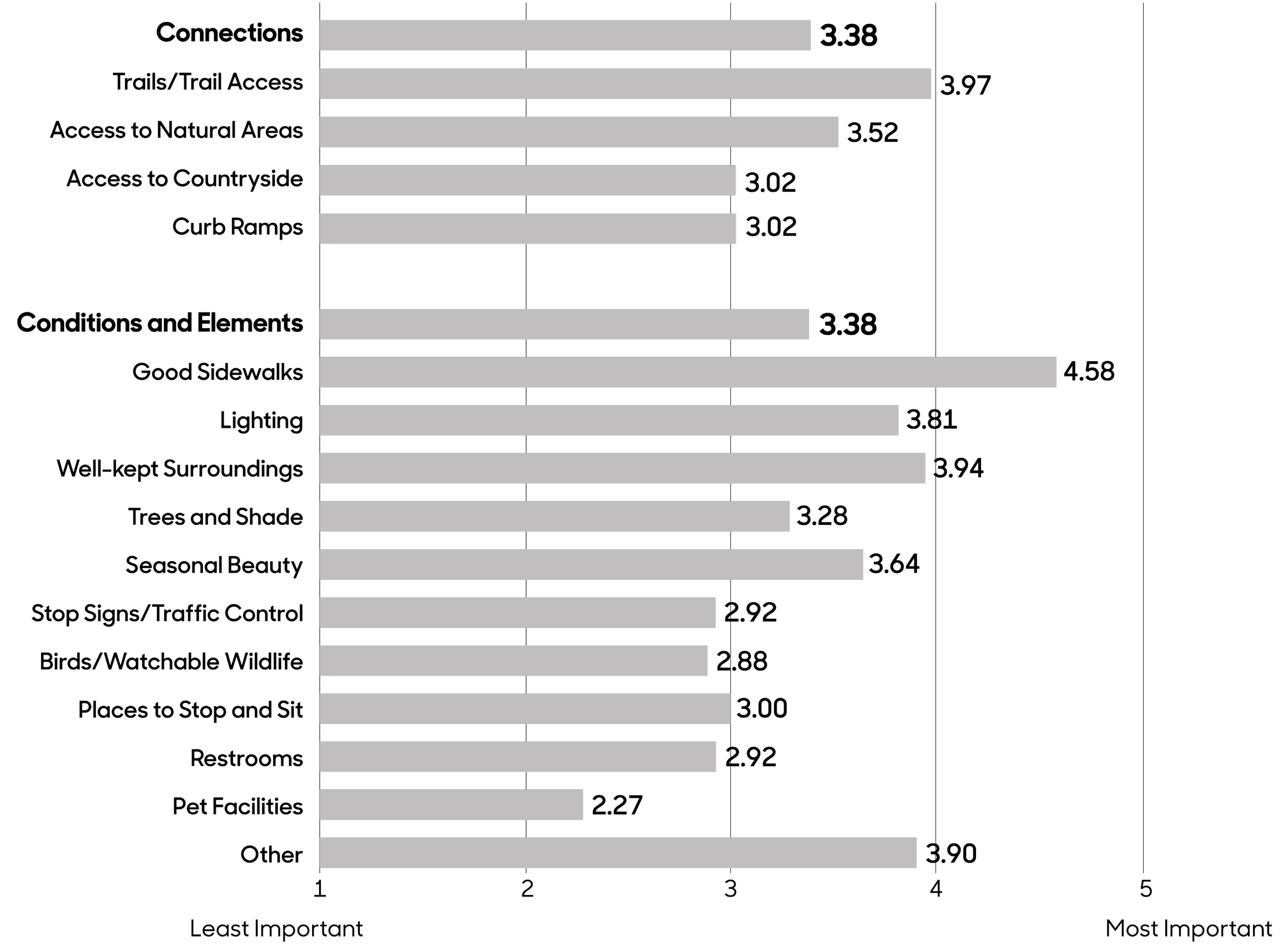
This map shows the walking routes identified by 59 survey respondents. The frequency that the routes are used is depicted by their width, with most frequently used routes being the thickest. The paved trail around the Pleasant View Park lake is the most popular venue for walking. People walk the unpaved trails there as well. Survey respondents also go to the cemetery, the youth sports complex, the golf course, and on the streets in the new subdivision across from the cemetery to walk. Walkers use most of the city streets, most often Eaton and Eagle Streets to Pleasant View Park, 12th Street, and Remsen Street.



Map Source: Iowa Department of Natural Resources, "Natural Resources Geographic Information Systems Library," <http://www.igsb.uiowa.edu/nrgislib/>.

Why They Go That Way

On a scale of 1 to 5, with 5 being the most important, survey participants ranked the characteristics and features that made their walking experience better. These features are categorized as either "connections" or "conditions and elements." Among Dunlap participants, connections and conditions/elements are equally important, both with a mean values of 3.38. In terms of connections, access to trails is most important with a mean value of 3.97. Good sidewalks (4.58) are the most important element to walkers, followed by well-kept surroundings (3.94) and other factors, including proximity, smooth surfaces, and public restrooms open year-round. Other significant factors include lighting (3.81) and seasonal beauty (3.64).



Dunlap Walking Routes

Transportation Behavior and Needs Survey

Julia Badenhop, Sandra Oberbroeckling, Chad Hunter

Iowa State University | Trees Forever | Iowa Department of Transportation

