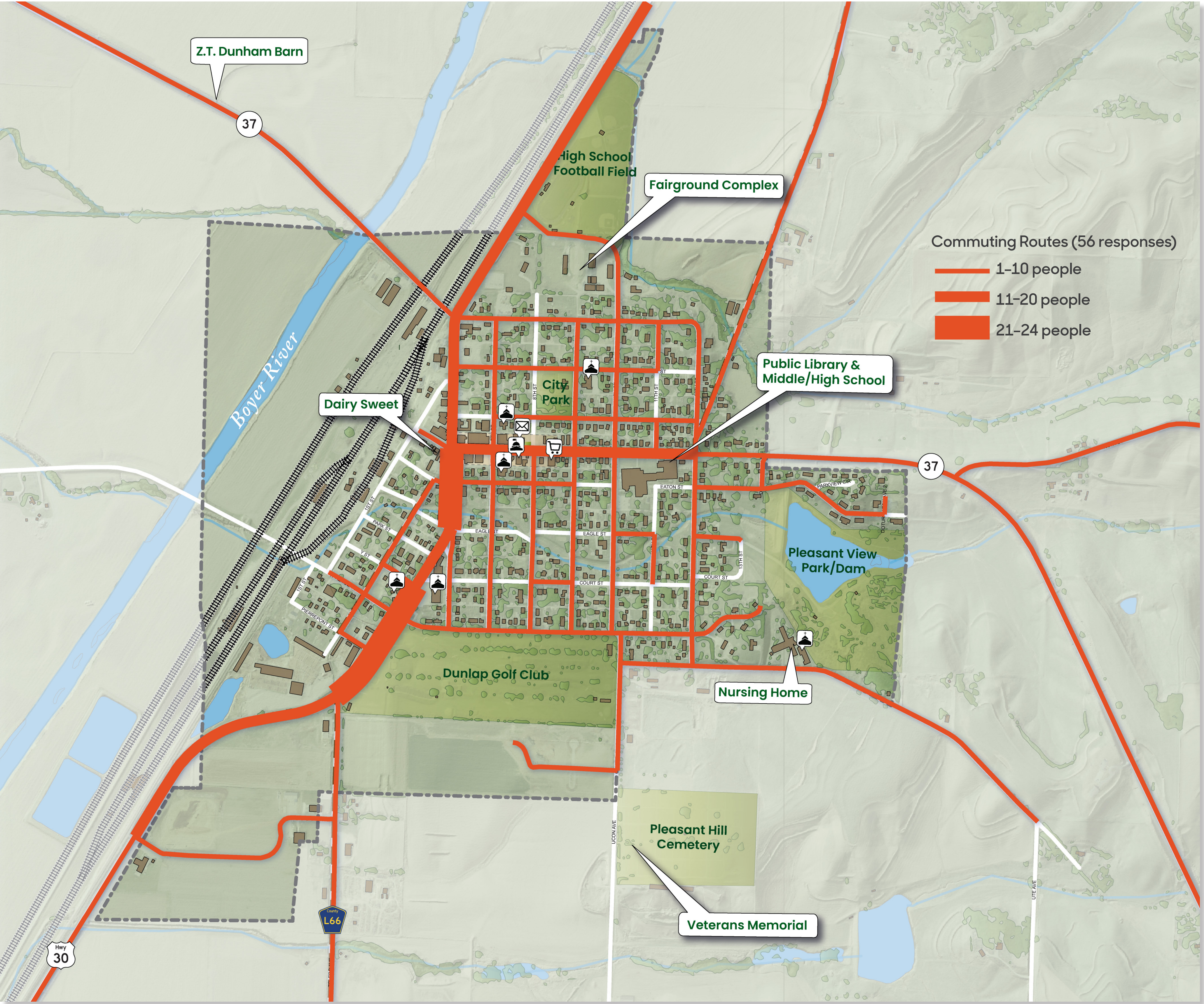


# How They Get There

This map shows the commuting routes identified by 56 survey respondents. The frequency that the routes are used is depicted by their width, with most frequently used routes being the thickest. The primary commuting corridor into and through Dunlap is U.S. Highway 30. Commuters coming into and going out of town from the east and west use Highway 37. In town, the most heavily traveled segments of U.S. 30 are from Iowa Avenue to Eagle Street and from Y Street to County Road L66. Iowa Avenue (Highway 37) is the most frequently used east-west corridor through town.

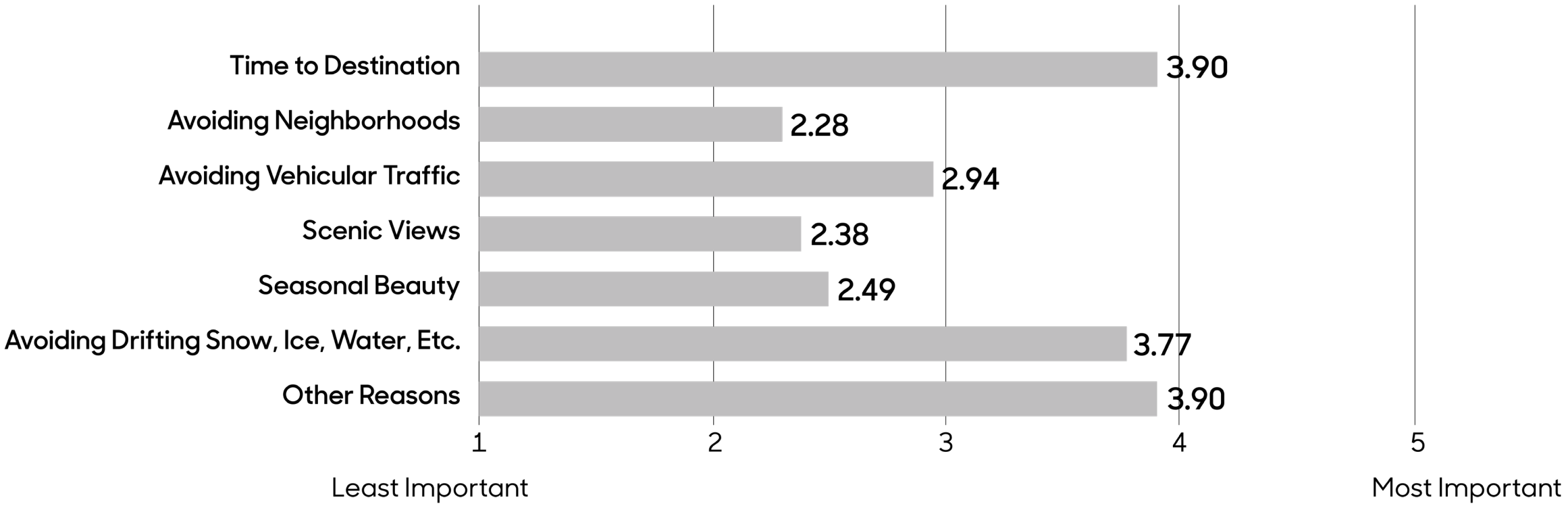
The circulation patterns that emerge when routes for biking, walking, and commuting are overlaid suggest suitable types of transportation enhancements. For example, where pedestrian and vehicular traffic intersect, such improvements could include creating better visibility, defining crossing points, or improving signage.



Map Source: Iowa Department of Natural Resources, "Natural Resources Geographic Information Systems Library," <http://www.igsb.uiowa.edu/nrgislib/>.

# Why They Go That Way

On a scale of 1 to 5, with 5 being the most important, survey participants ranked the characteristics and features that factored into their choice of commuting route. Among Dunlap participants, time to destination and other reasons—avoiding stop signs, avoiding potholes, and security—are equally important, both with a mean value of 3.90. Avoiding weather-related issues such as snow and ice is also considered important, with a mean value of 3.77. Scenic views, seasonal beauty, and avoiding neighborhoods are not critical factors in determining commuting routes.



# Dunlap Commuting Routes

## Transportation Behavior and Needs Survey

Julia Badenhop, Sandra Oberbroeckling, Chad Hunter

Iowa State University | Trees Forever | Iowa Department of Transportation

