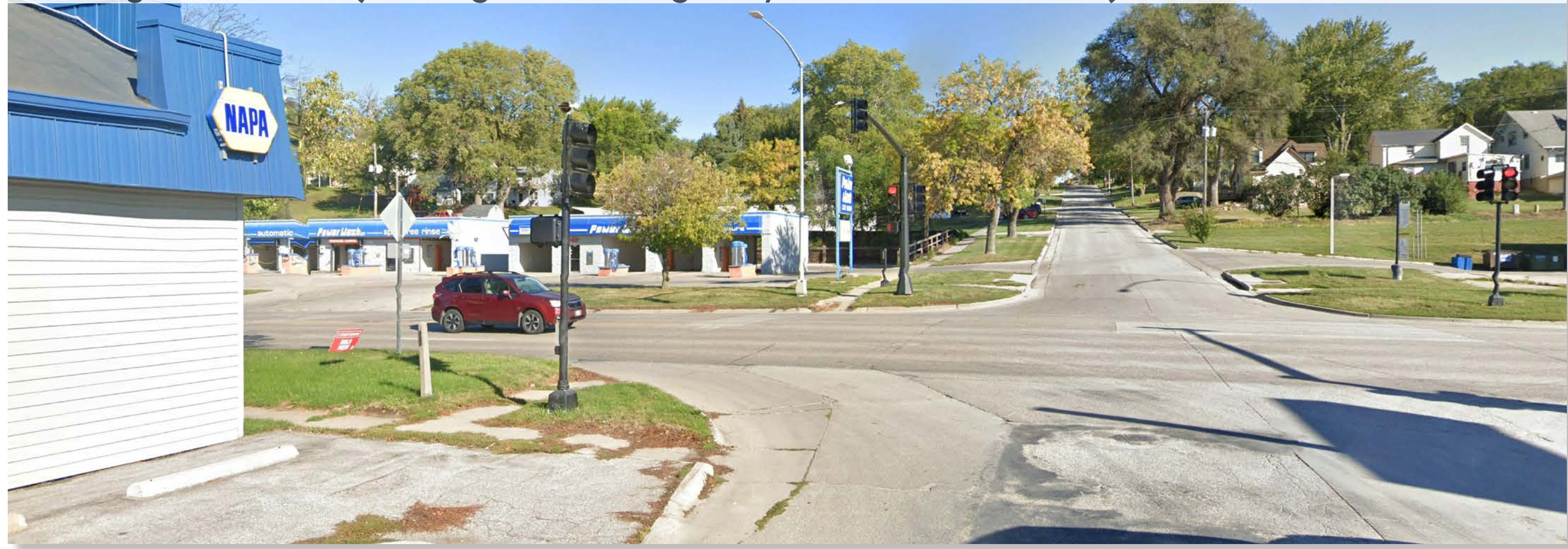


Existing Intersection (Looking North at Highway 30 and S 11th Street)



Proposed Intersection Improvements (Looking North at Highway 30 and S 11th Street)



### Proposed Intersection Improvements

Reducing the speed of traffic, improving the pedestrian mobility experience, and enhancing the overall aesthetics of the community serve as the guiding principles for an intersection design template that can be implemented throughout Denison.

The intersection at Highway 30 and South 11th Street is the first signalized intersection vehicles reach when traveling west on Highway 30. Although this location would not be considered a main intersection within Denison, it does serve a large number of pedestrians, many with mobility challenges, who cross Highway 30 to access WESCO Industries (located directly south of the intersection).

The proposed template recommends additional

improvements be implemented when the City of Denison needs to repair intersections. As necessary, replace surrounding sidewalk to eliminate any uneven, cracked, or spalling concrete panels. This will reduce any potential for tripping hazards as pedestrians approach the street. All sidewalks should be a minimum of 5' wide to allow for two-way pedestrian traffic. Where sidewalks meet the back of curb, ADA-accessible curb ramps with associated detectable warning plate should be installed. It is also recommended that signalized pedestrian crossing buttons be installed. To differentiate the pedestrian crosswalk from the vehicular street, the intersection template proposes installing a decorative textured crosswalk that is a minimum of 6' wide.

Proposed Intersection Improvements at Highway 30 and S 11th Street



# Denison Typical Intersection Improvements

HDR  
LA: Alison Ingunza, PLA, ASLA  
Intern: Caeley Reade  
Iowa State University | Trees Forever | Iowa Department of Transportation

