

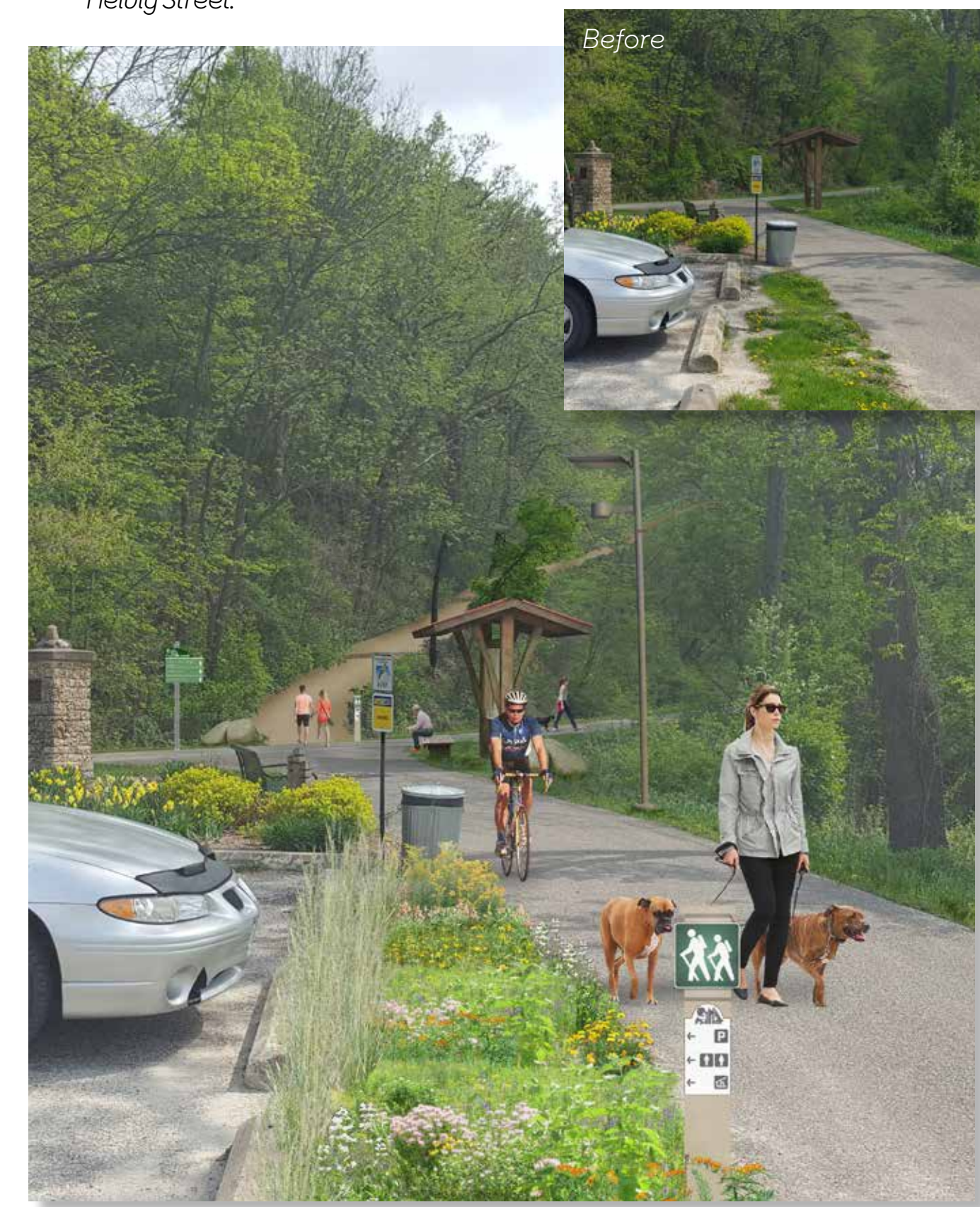
Decorah map showing existing trails and the desired destination connections into, around, and within the city.



1 Plan view of College Drive and Heivly Street showing optional intersection improvements with a protected two-way bike lane along the south side of Heivly Street.



2 North facing perspective on Montgomery Street at the entrance of The Depot, showing the proposed trail crossing to the west of the street.



3 Perspective at the east Dug Road Trailhead looking south, depicting a natural surfaced trail providing access to Phelps Park.



4 Perspective looking north down Pleasant Ave. from the St. Benedict Cemetery showing dedicated paved bike lanes, a crossing, and a new trail accessing a future designated city park.