

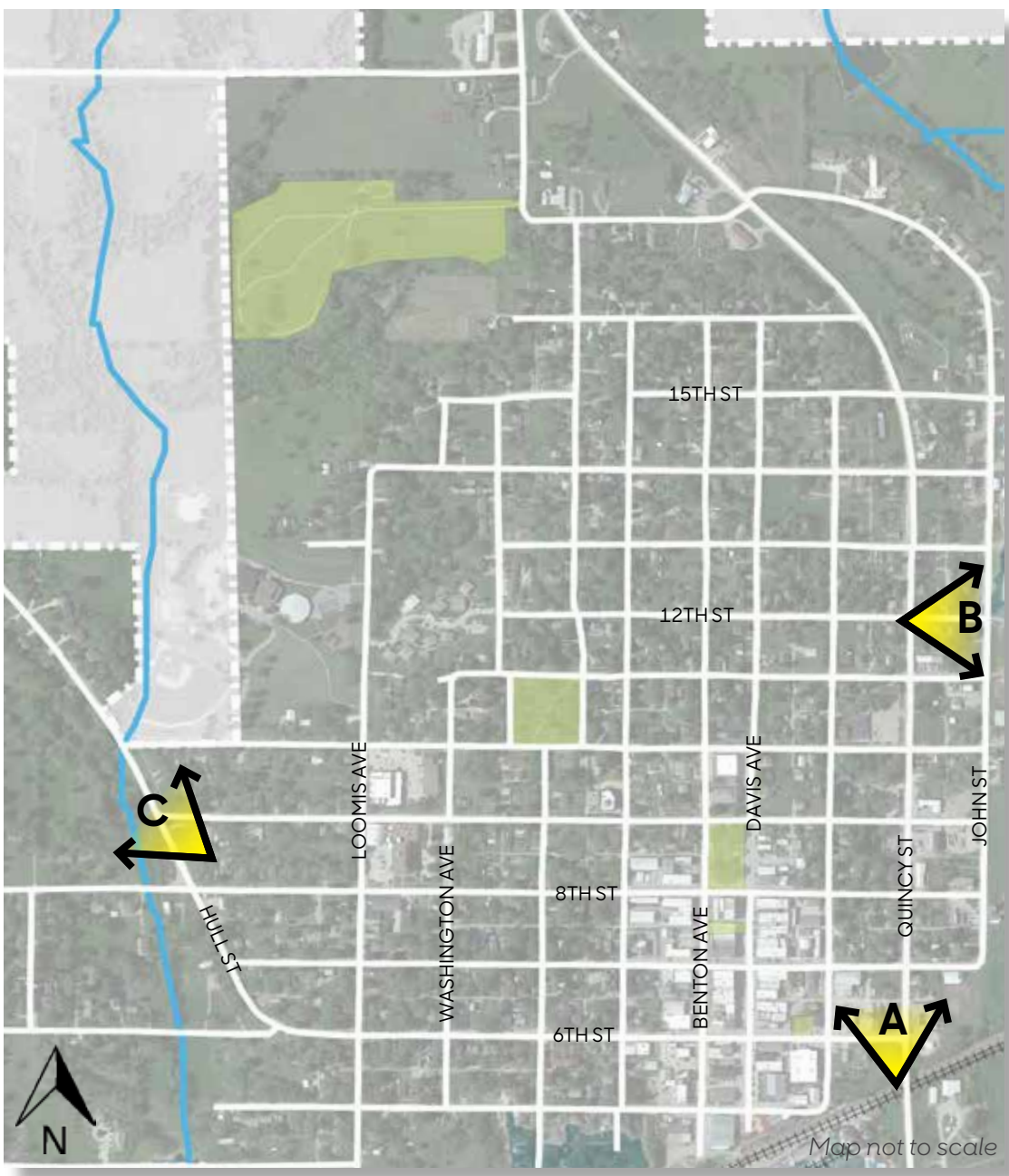
Safety and Accessibility

Improved sidewalk surfaces is one of Corning's top goals in the Transportation Assets and Barriers findings. Sidewalk conditions vary across town are generally better downtown and begin to deteriorate as you move away from the city core. Installing new and ADA accessible sidewalks improves the walkability of the city and helps promote outdoor recreation.

As sidewalks are updated over time, curb ramps should be included for ADA accessibility. However, with Corning's hilly terrain ADA accessibility will not always be achievable. The proposed sidewalk along Hull Street is too steep to be an accessible route. Both sidewalk and trail improvements offer a holistic look at community-wide accessibility that can be strategically phased in over time.



A. Perspective showing sidewalk safety improvements on Qunicy St, at the intersection of 6th St.



Sidewalk improvement perspective locations map.



B. Perspective showing sidewalk safety improvements on 12th St, at the intersection of John St.



C. Perspective showing sidewalk safety improvements on Hull St, facing North.