

### Accessing Natural Resources

Corning is situated among a variety of natural resource assets. Many residents enjoy the existing parks within the community as well as larger parks such as Lake Binder and Lake Icaria just outside the community.

It has been well documented in the Transportation Assets and Barriers workshops as well as the Goal Setting exercise that Corning residents desire a designated trail in town. More so, they desire a trail that provides access to their in-town natural resources.

Corning has asked the design team to develop a landscape plan identifying a proposed trail connecting to Spring Lake Park. A new multi-purpose trail is routed south from the Highway 148/East Nodaway River bridge connecting to the ball fields and Spring Lake.

The design proposal includes a reorganized parking area for the ball fields, a new trailhead area adjacent to Spring Lake, and additional trails connecting to the residential area further west. The design takes into consideration existing topography for low maintenance.



Spring Lake Park Trailhead Plan.

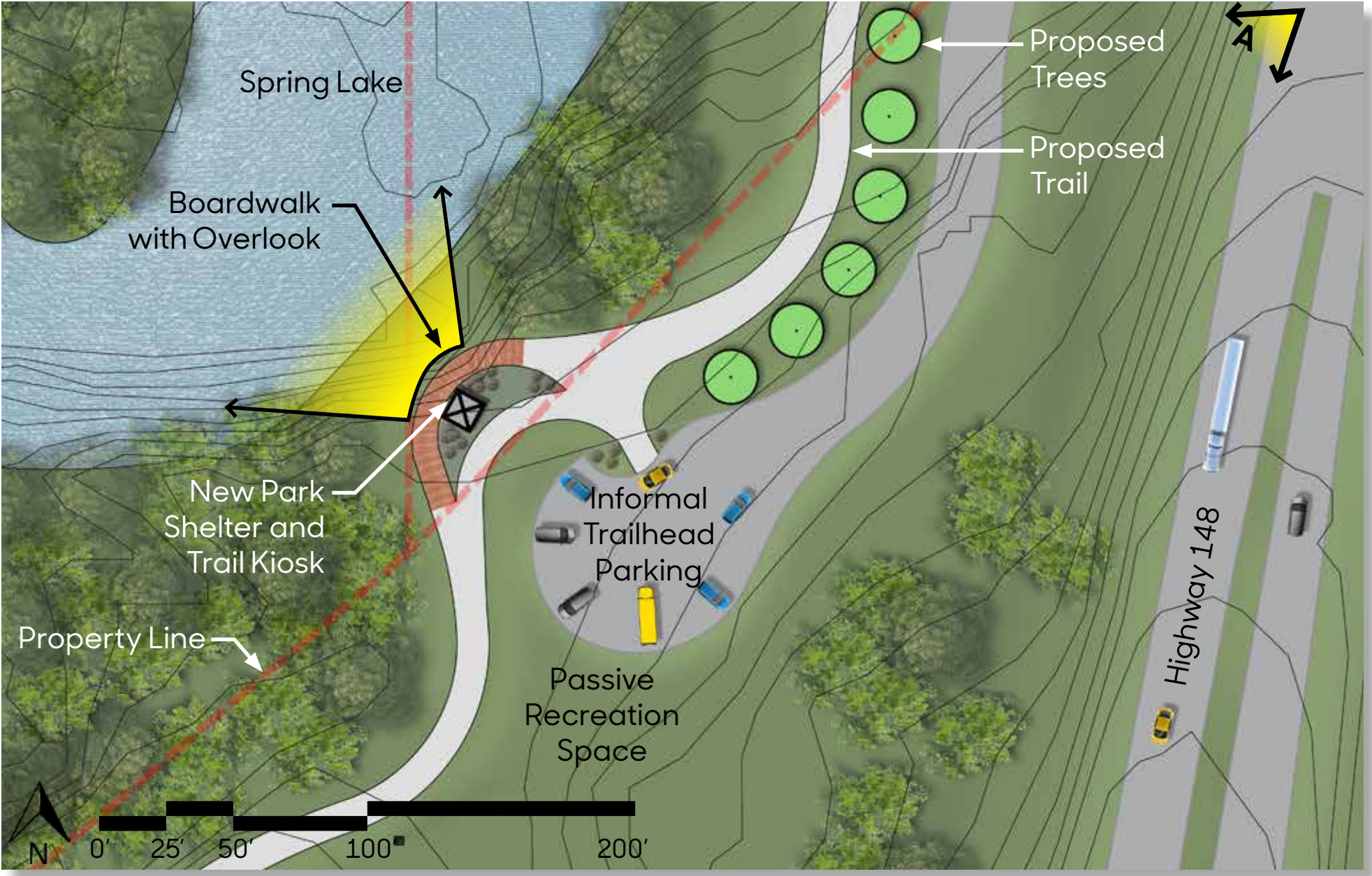


Figure 1: Detail Plan of Spring Lake Park Trailhead.

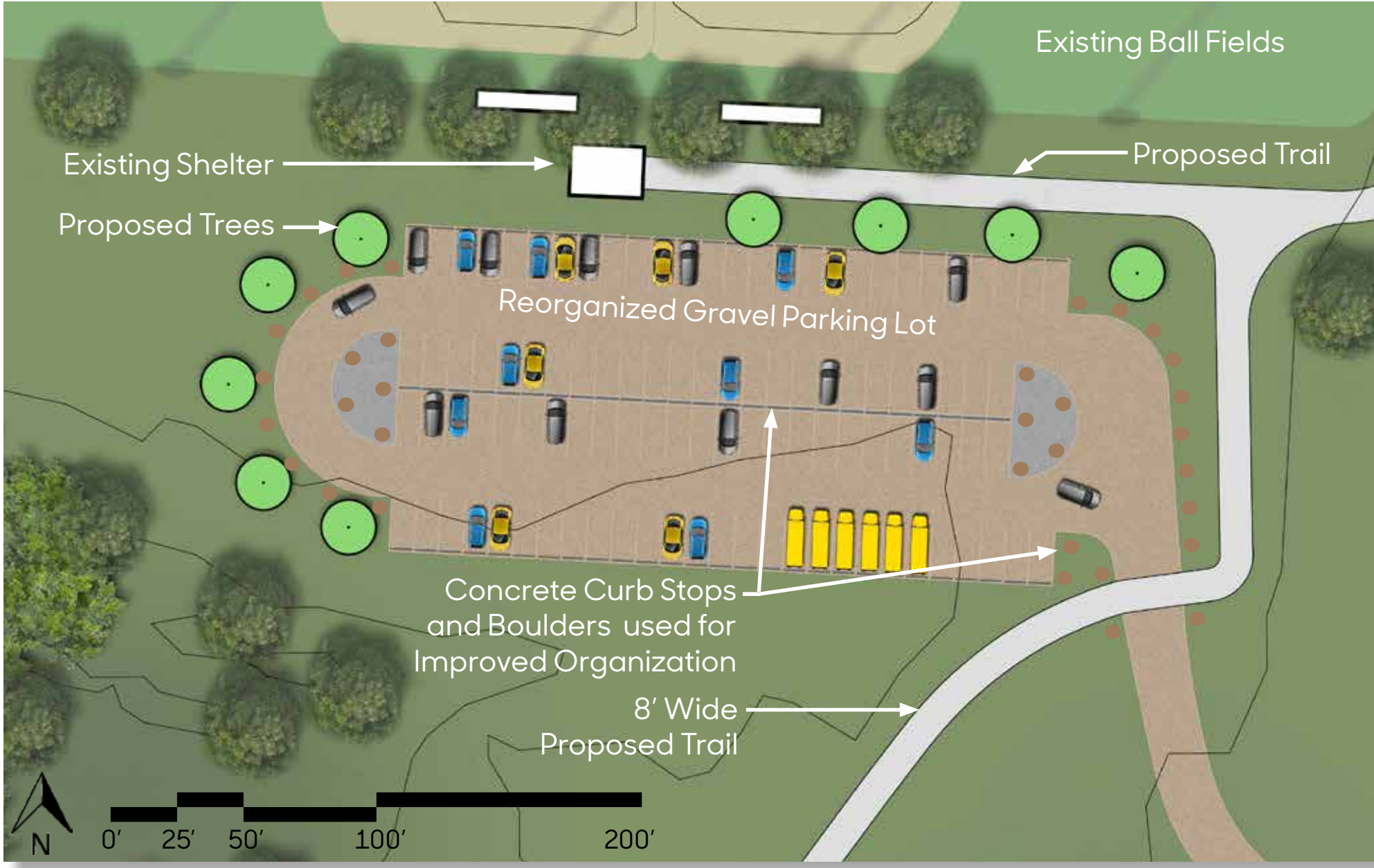


Figure 2: Detail Plan of Ball fields Parking lot.



A. Perspective looking southwest towards the proposed trailhead and parking area for the Spring Lake Trail.