



Corner of 3rd St. N and Betenbender Lane

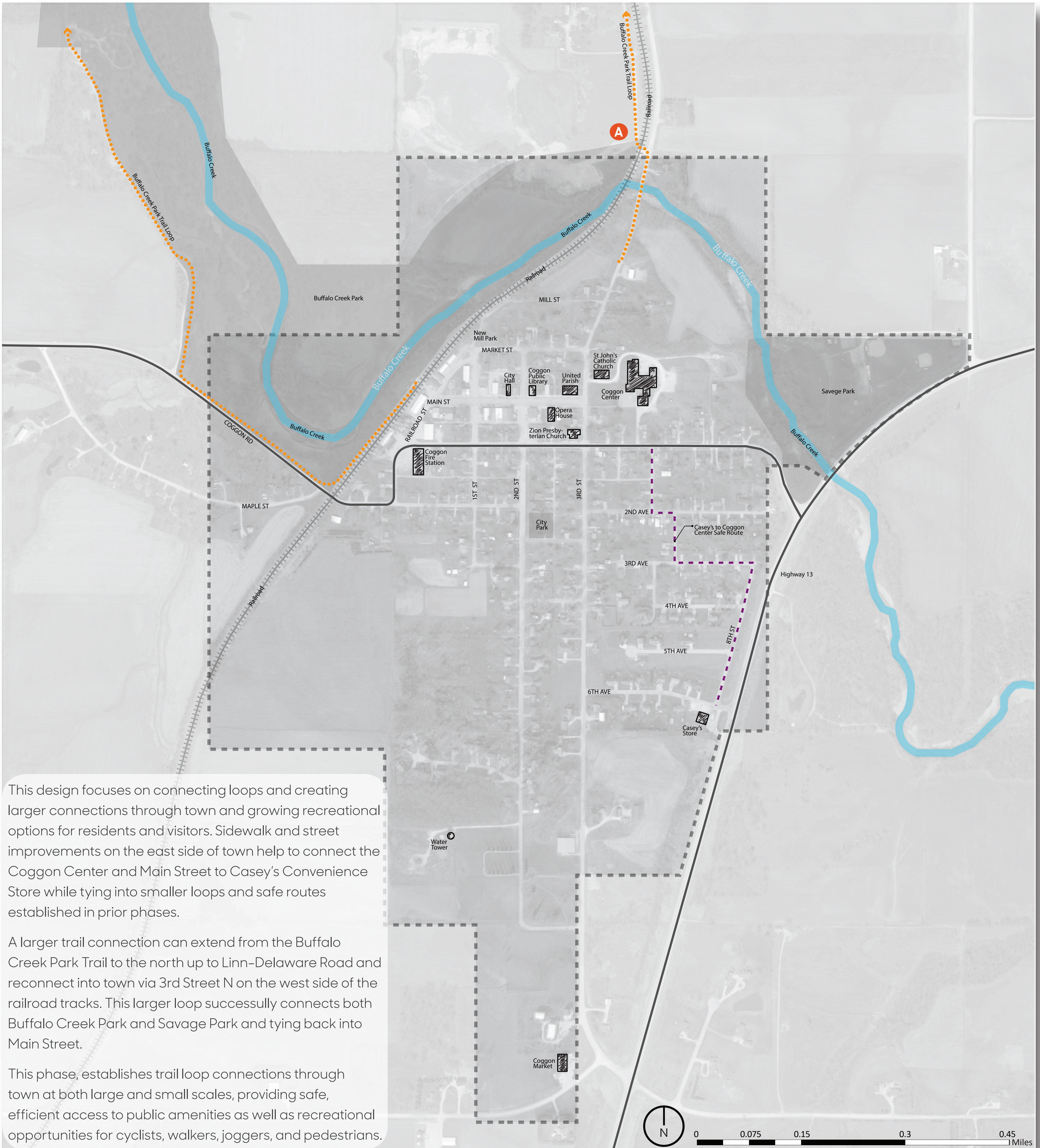


Historic Train Trestle Bridge



Buffalo Creek Park Trailhead

"I just really want the bike trail. I think that would help a lot to get people down here more, especially if we do it near the camping grounds. That'll hopefully bring in more people."



This design focuses on connecting loops and creating larger connections through town and growing recreational options for residents and visitors. Sidewalk and street improvements on the east side of town help to connect the Coggon Center and Main Street to Casey's Convenience Store while tying into smaller loops and safe routes established in prior phases.

A larger trail connection can extend from the Buffalo Creek Park Trail to the north up to Linn-Delaware Road and reconnect into town via 3rd Street N on the west side of the railroad tracks. This larger loop successfully connects both Buffalo Creek Park and Savage Park and tying back into Main Street.

This phase, establishes trail loop connections through town at both large and small scales, providing safe, efficient access to public amenities as well as recreational opportunities for cyclists, walkers, joggers, and pedestrians.

NOTE: Each concept, priority, and time line are intended to be flexible as determined by the community. Phases and time lines are intended only to demonstrate how large-scale improvements can be achieved by implementing small-scale projects strategically over time to achieve broader reaching goals.