

Map of existing trail network surrounding Wright County. Not to scale.

Regional Trails

Clarion currently has no designated trails within the community. The nearest recreation trail is the Lake Cornelia Path approximately 5 miles north of town. This area is more accessible for Clarion residents with the newly paved shoulders along Nelson Avenue.

The regional map to the left highlights existing trails within each county surrounding Clarion. Clarion has much potential to be a major trail connector from the eastern Rolling Prairie Trail, western Three Rivers Trail, and northern Franklin Grove Heritage Trail and beyond.

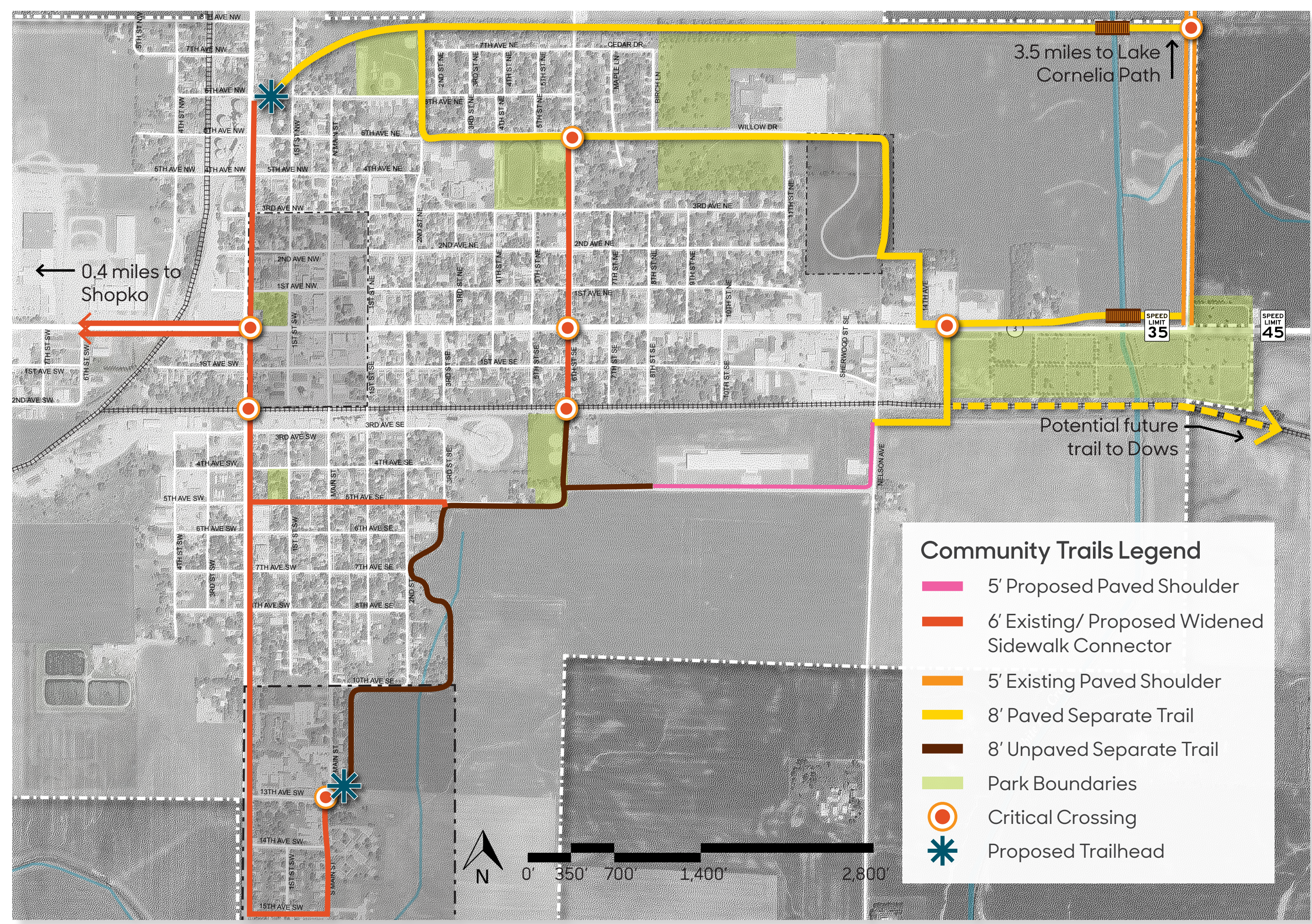
Regional Trails Legend

- Existing Paved Shoulder
- Existing Separate Trail (Paved or Unpaved)
- Nearby Communities
- County Boundaries



After: Proposed trail crossing 6th Street NE looking south.

Before



Map of Clarion showing potential recreational trail routes, trail amenities, and accessibility. Map not to scale.

Community Trails

As identified at the community assessment and goal setting workshops, many residents desire a walking trail in-and-around Clarion. The proposed community trails options on the map to the left are a combination of existing sidewalks, planned future sidewalks, old railroad corridor, new separated trails, and paved shoulders. A much closer look at property ownership, roadway rights of way, and City planned projects is needed to further plan and prioritize trail route options.



Before



After: Proposed trail and bridge across White Fox Creek north of Highway 3 looking west.

Clarion Comprehensive Trail System

Jeffrey L. Bruce and Company LLC
 Landscape Architects: Eric Doll, PLA, ASLA and David Stokes, PLA, ASLA
 Interns: Riley Dunn and Carol Joella Ustine
 Iowa State University | Trees Forever | Iowa Department of Transportation

