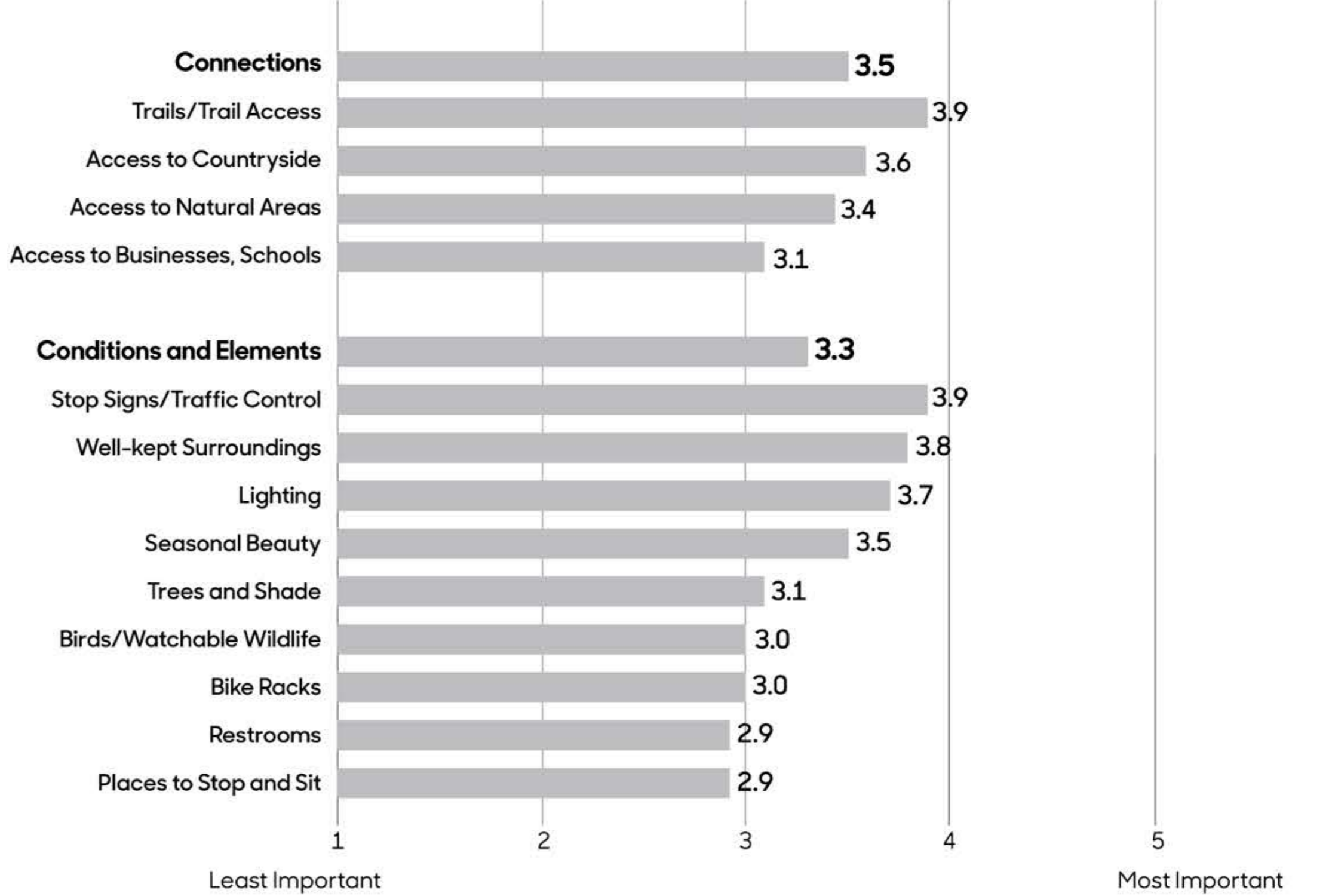
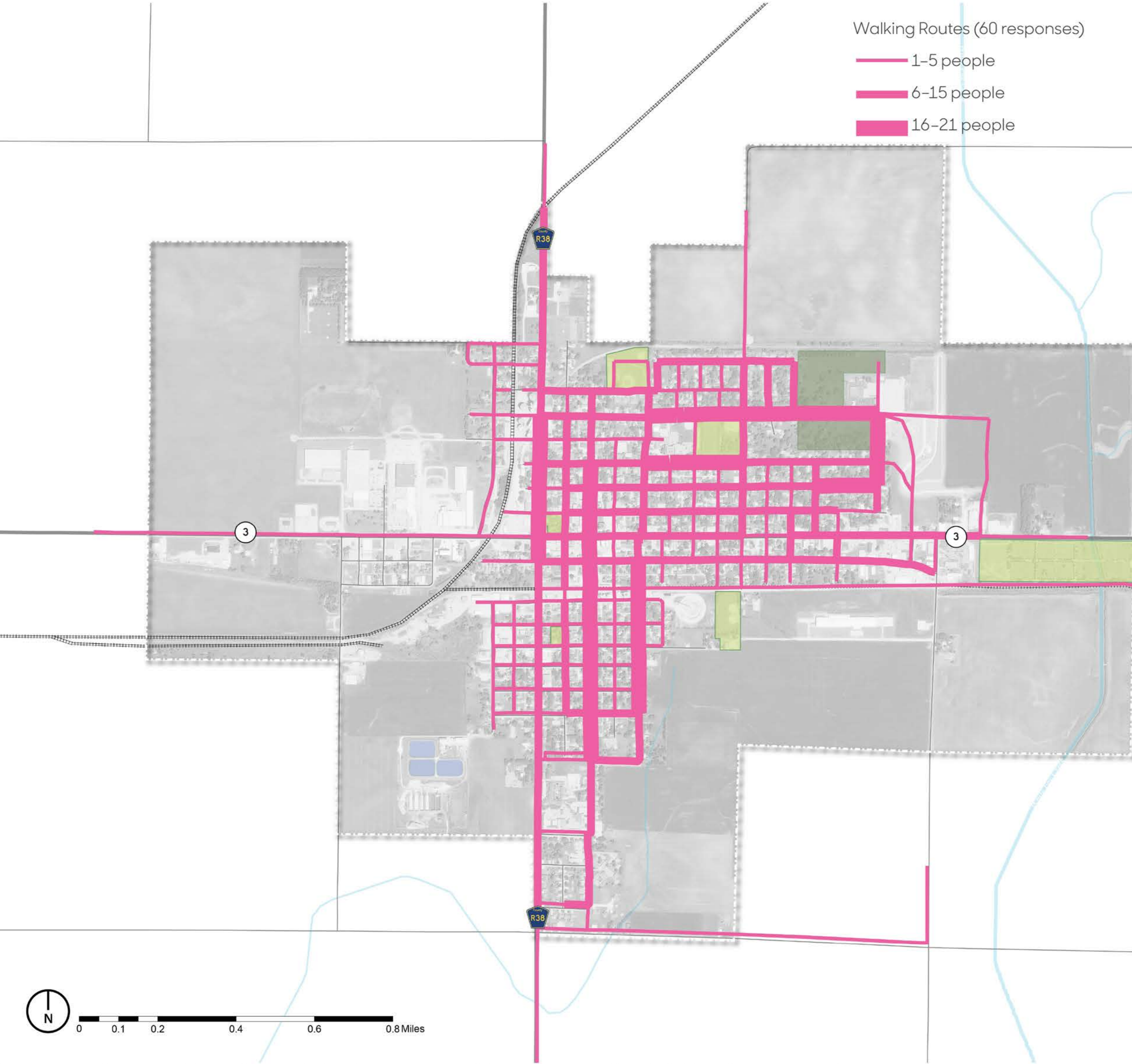


# Where They Go

This map shows the walking routes identified by 60 survey respondents. The frequency that the routes are used is depicted by their thickness, with most frequently used routes being the thickest. The Raccoon River Valley Trail is clearly the most popular walking route in Adel, particularly west of Highway 169. In town, participants indicated that they walk the grid of streets in "Adel proper." A number of people also walk in Kinnick-Feller Park, with some going on to Oakdale Cemetery. Some participants walk around Evans Park and in the subdivision to the south; others walk in Island Park. A few people walk along US 6 within city limits.

# Why They Go That Way

On a scale of 1 to 5, with 5 being the most important, survey participants ranked the characteristics and features that made their walking experience better. These features are categorized as either "connections" or "conditions and elements." Among Adel participants, connections and conditions/elements have nearly equal importance with mean values of 3.5 and 3.4, respectively. In terms of connections, access to trails is most important with a mean value of 4.1. Good sidewalks are the most important element to walkers (4.4), followed by well-kept surroundings (4.1) and trees and shade (4.0).



Map Source: Iowa Department of Natural Resources, "Natural Resources Geographic Information Systems Library," <http://www.igsb.uiowa.edu/nrgislib/>.