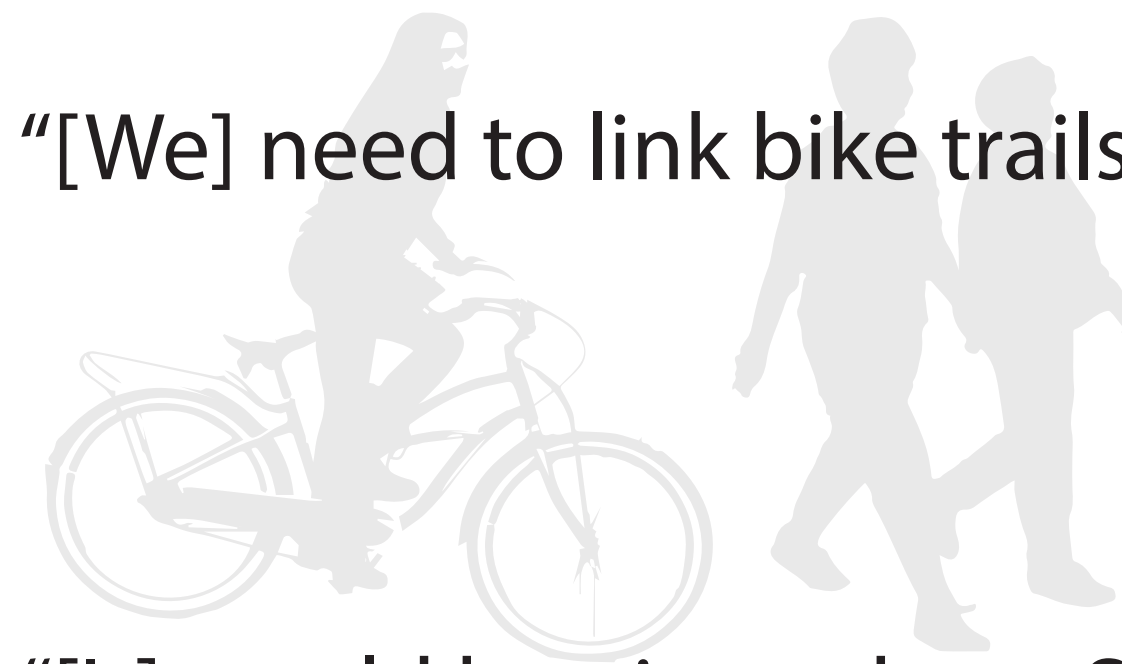


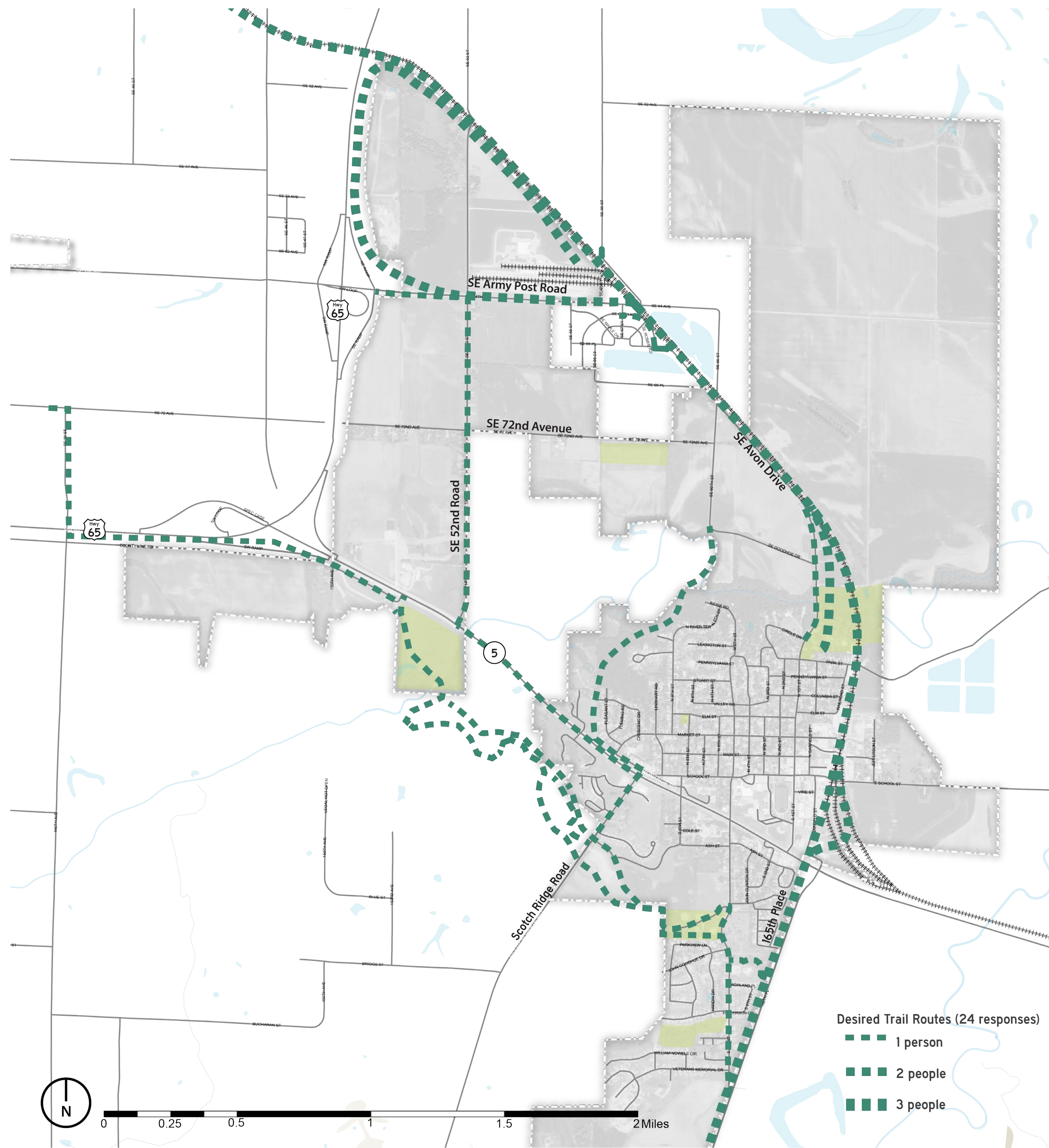
Where Do People Want Trails?

This map shows the desired trail routes identified in the survey. The frequency that the routes are used is depicted by their thickness, with most frequently used routes being the thickest. Twenty-four survey participants identified routes for new trails. The trail routes identify mirror the walking, biking, and running patterns of participants in that the desired trails connect to city parks and the Scotch Ridge Nature Park. Participants also desire trail connections between Carlisle and the Des Moines trail system, as well as connections within the community itself. One of the popular desired trail routes follows the rail line from Summerset Trail north to US Highway 65 and beyond, presumably connecting with the Des Moines trail system. A trail connecting with the middle school is also popular, reflecting respondents' concern regarding children's access to the middle school.

"[We] need to link bike trails to the Des Moines system."



"[It] would be nice to have Summerset Trail connected to [the] rest of [the] area trails."



Map Source: Iowa Department of Natural Resources, "Natural Resources Geographic Information Systems Library," accessed October 2015, <http://www.igsb.uiowa.edu/nrgislib/>. Route data derived from the 2016 Designing Livable Communities survey conducted by Iowa State University.

Carlisle

Transportation Behavior and Needs | Desired Trail Routes