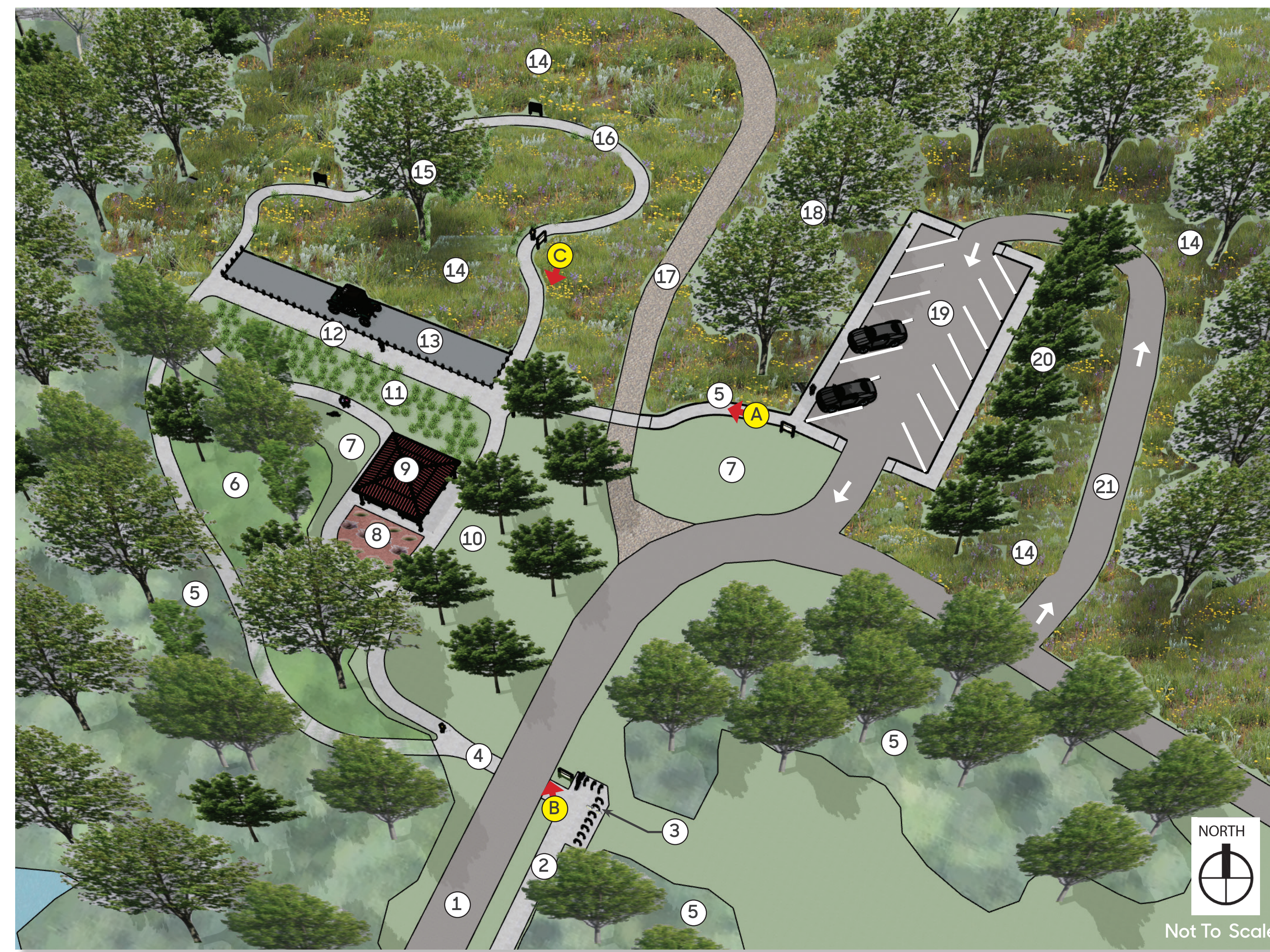


- LEGEND**
- ① Ingress/egress drive from Lincoln Highway to Trailhead (shared access for vehicles and bicyclist)
  - ② 6' wide sidewalk connection from Lincoln Highway sidewalk to trailhead
  - ③ Bike parking using nature-inspired decorative themed bike racks like those proposed for the Syracuse bridge area
  - ④ 6' wide sidewalk to access shelter, historical Lincoln Highway roadway display, native prairie/pollinator garden, and lawn areas; and to meander along existing woodland edge
  - ⑤ Existing woodland
  - ⑥ Maintained lawn with native tree mix for shade
  - ⑦ Maintained lawn area
  - ⑧ Native plant identification display garden
  - ⑨ Shelter with picnic tables and trash receptacles
  - ⑩ Maintained lawn area with native ornamental trees
  - ⑪ Formal landscape area utilizing native prairie plants
  - ⑫ 8' wide sidewalk along display area, along with interpretive signage
  - ⑬ Historical display of Lincoln Highway pavement remnant and vintage Model T; display area protected by posts and cables reflective of ones used along Lincoln Highway (to prevent vehicles from accessing the roadway display)
  - ⑭ Existing native prairie/pollinator garden
  - ⑮ Bur oak tree (one)
  - ⑯ 5' wide path meandering through prairie/pollinator garden; interpretive signage spaced adjacent to path
  - ⑰ Existing gravel drive
  - ⑱ Native oak buffer to include bur oak, white oak, and chinkapin oak
  - ⑲ Angled parking, includes ADA-compliant stalls as required
  - ⑳ Tree buffer utilizing native understory trees
  - ㉑ One-way drive to angled parking lot



Birds'- eye plan view 2a: Concept plan for trailhead

Due to the historical significance of the pavement remnant, combined with the location of this area relative to the proposed trail corridor and the Lincoln Highway Heritage Byway, this area was deemed the most logical location for the Trailhead.

This proposed trailhead not only provides a convenient area to park and access the Warrior Trail, but more importantly, it enhances the area by highlighting the remnant and expanding the native restoration work that the state has done. The addition of site amenities such as a defined and accessible parking lot, ADA-compliant sidewalks, picnic shelter, benches, and interpretive and

informational signage will enhance the comfort of the user. Sidewalks and paths meandering through the different plant communities and providing connectivity to the site amenities encourages interaction with the environment and learning at the site.

The photo to the right is of the original Lincoln Highway remnant as it exists today. It is not marked and the parking area goes right up to the edge.



**Trailhead**

Representatives from both the Calamus and Wheatland visioning committees met with state, local, and county officials in mid-June 2021 to review the proposed Warrior Trail corridor as well as the area of the Syracuse Wildlife Management Area where the original Lincoln Highway pavement remnant is located.

**Cal-Wheat**  
Trailhead

**FLENKER LAND ARCHITECTURE CONSULTANTS, LLC**  
 LA: Meg Flenker, PLA, ASLA, CPESC, CPSWQ  
 Interns: TJ Hillberry, Paola Monllor-Torres and Ethan Morrow  
 Iowa State University | Trees Forever | Iowa Department of Transportation



**A** Concept sketch 2b: View from southwestern corner of parking lot looking westerly towards the shelter, kiosks, and historic Lincoln Highway pavement



**B** Concept sketch 2c: View from bike parking area looking northwesterly towards the shelter and information signage; nature-inspired artistic bike racks like those shown on board 4 are recommended



**C** Concept sketch 2d: View from trail that runs through the prairie and is looking southerly towards the historic Lincoln Highway, the shelter, prairie, and kiosks

