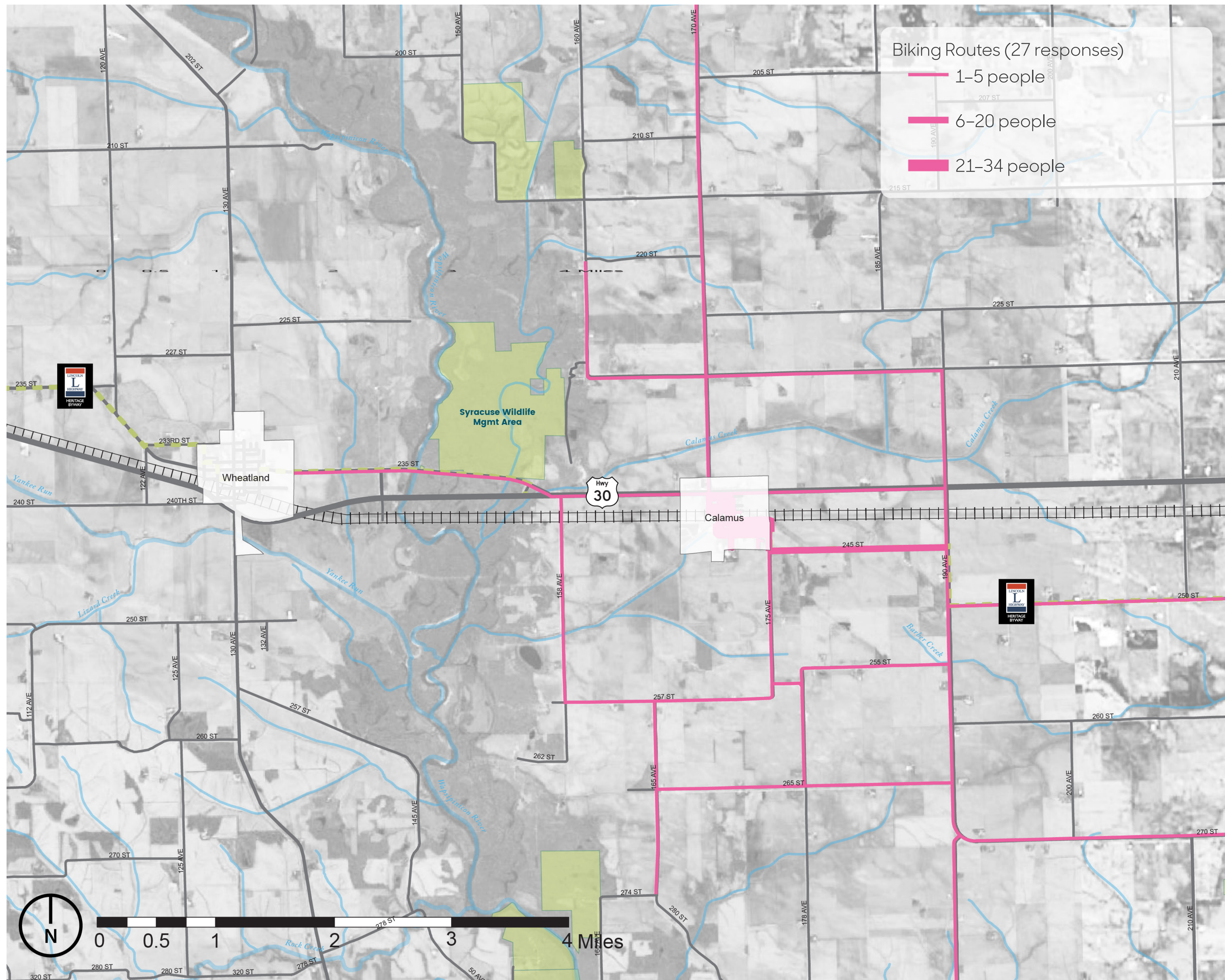


Where They Bike

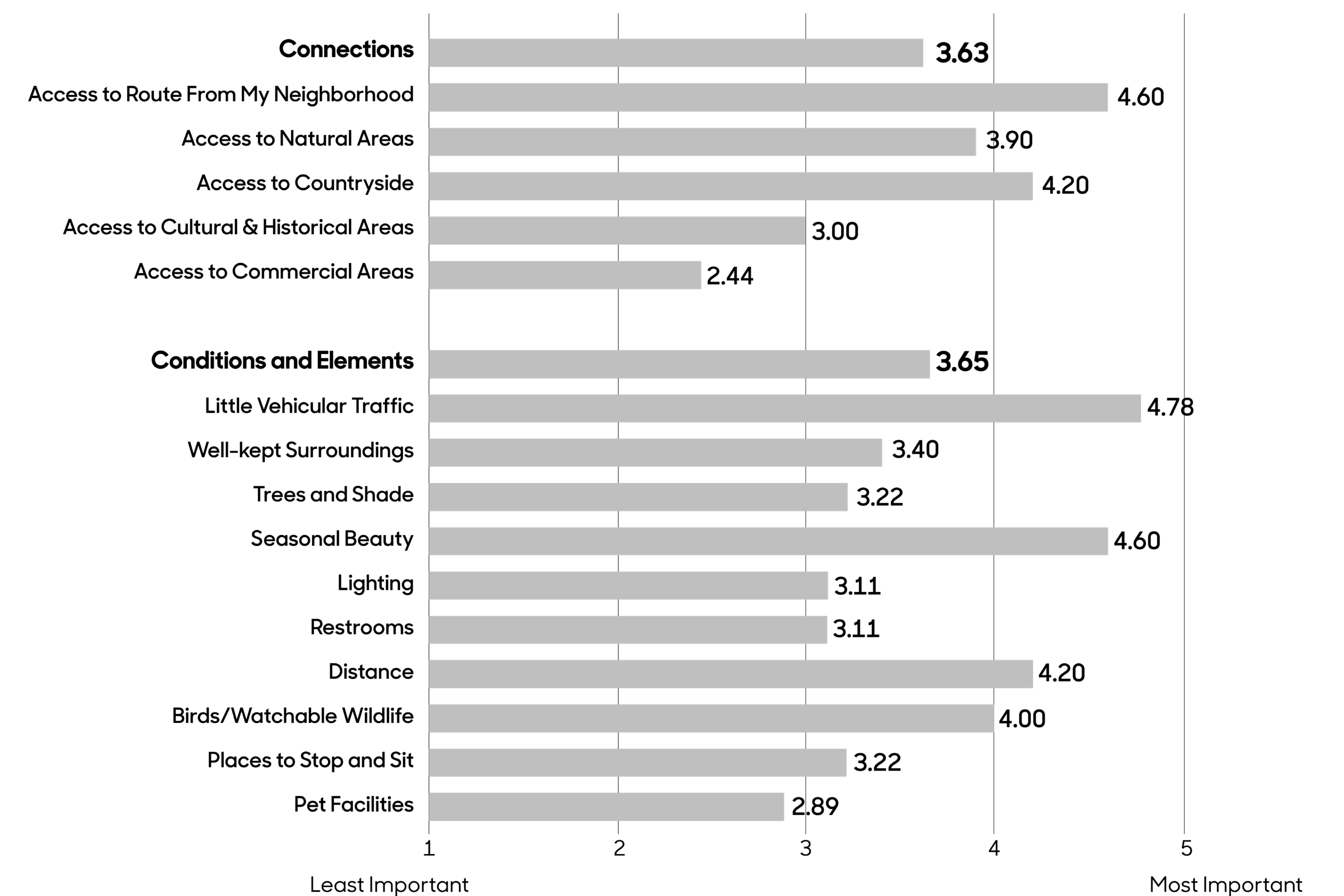
This map shows out-of-town biking routes identified by 27 survey respondents. The frequency that the routes are used is depicted by their width, with most frequently used routes being the thickest. Portions of the Lincoln Highway Heritage Byway are the most heavily used routes among Calamus cyclists, who bike both east out of town and west along the byway to the Syracuse Wildlife Management Area and on to Wheatland. Some people bike south to Sherman Park and some travel north to Mockridge County Wildlife Preserve.



Map Source: Iowa Department of Natural Resources, "Natural Resources Geographic Information Systems Library," <http://www.igsb.uiowa.edu/nrgislib/>.

Why They Go That Way

On a scale of 1 to 5, with 5 being the most important, survey participants ranked the characteristics and features that made their out-of-town biking experience better. These features are categorized as either "connections" or "conditions and elements." Among Calamus participants, connections have roughly the same importance as conditions/elements, with mean values of 3.63 and 3.65, respectively. In terms of connections, access to the route from one's neighborhood is most important with a mean value of 4.60, followed by access to the countryside (4.20). Little vehicular traffic (4.78) is the most important element to cyclists, followed by seasonal beauty (4.60), distance (4.20), and birds and watchable wildlife (4.0).



Calamus Regional Biking Routes

Transportation Behavior and Needs Survey

Julia Badenhope, Sandra Oberbroeckling, Chad Hunter

Iowa State University | Trees Forever | Iowa Department of Transportation

