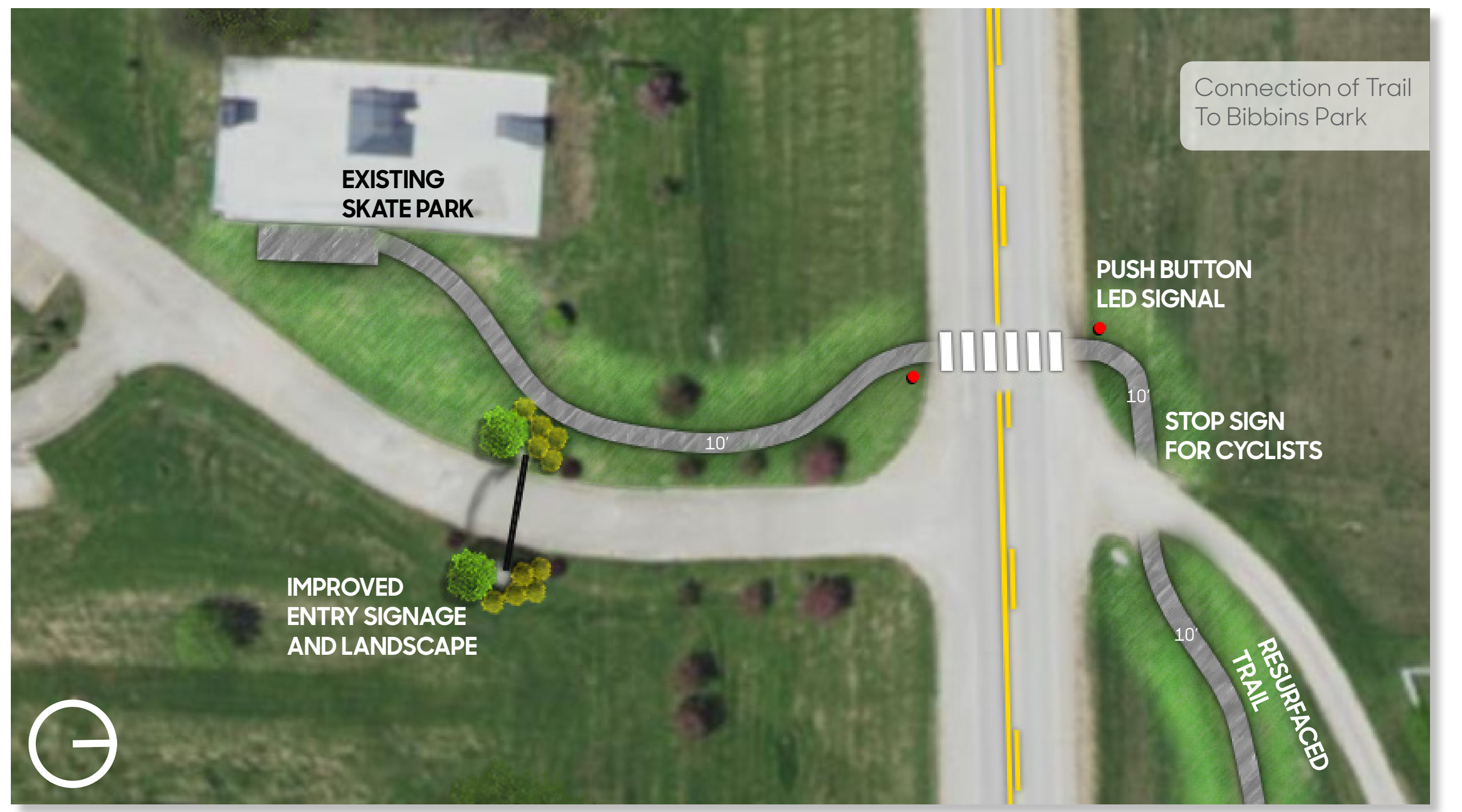




Highway 2 connection to Hy-Vee



Highway 2 connection to pedestrian trail

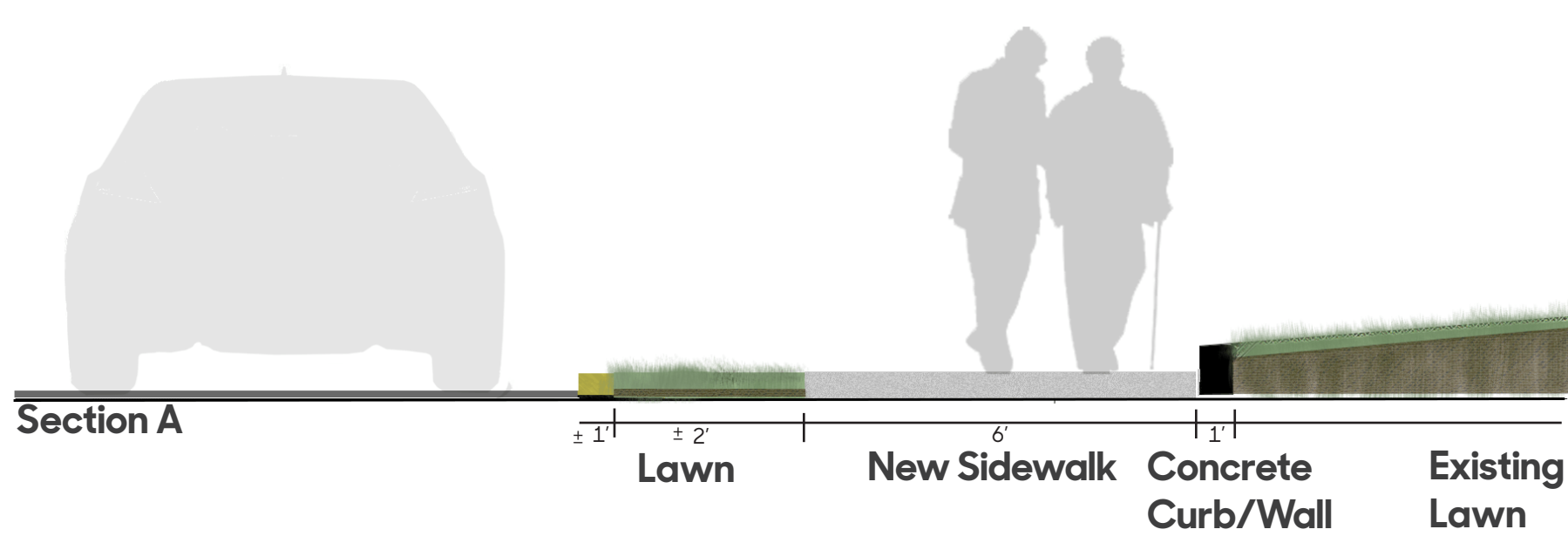
Pedestrian Connections

Other areas identified for pedestrian connectivity improvements include the route along Pollock Boulevard (Hwy 2) between Hy-Vee and the existing sidewalks on Illinois Street and Madison Street (Hwy 148), the multi-use recreational trail between Bibbins Park and the Bedford Water Supply Lake north of town, and the connection to Bibbins Park from Madison Street via Grant Street.

A continuous sidewalk is being proposed along the south side of Pollock Boulevard to connect the Hy-Vee to the existing pedestrian routes through town along Illinois and Madison Streets. A sidewalk connection is also being proposed between Madison Street and State Street along Grant Street to provide pedestrians with direct access to the west entrance of Bibbins Park.

In addition to new concrete surfacing, new pedestrian routes will incorporate curb ramps, retaining walls, pedestrian crossing signs, and marked street crossings at intersections to alert vehicular traffic to pedestrian activity and maintain comfort and accessibility for all users.

An extension of the existing recreational trail across Pollock Boulevard (Hwy 2) to the north entrance of Bibbins Park will provide more convenient access to the trail and associated amenities to the north around the Bedford Water Supply Lake. Resurfacing the existing gravel trail with asphalt and adding new plantings are intended to provide comfort and encourage more activity on the multi-use trail between Bibbins Park and the lake.



Trail and bridge improvements



Improved connection to highway and Hy-Vee from Madison St.



Continuous sidewalk on Grant St. to Bibbins Park

Bedford Pedestrian Connections

Design Team

LA: Dylan Jones, PLA, ASLA
 Intern: Paola Monllor Torres
 Iowa State University | Trees Forever | Iowa Department of Transportation

