

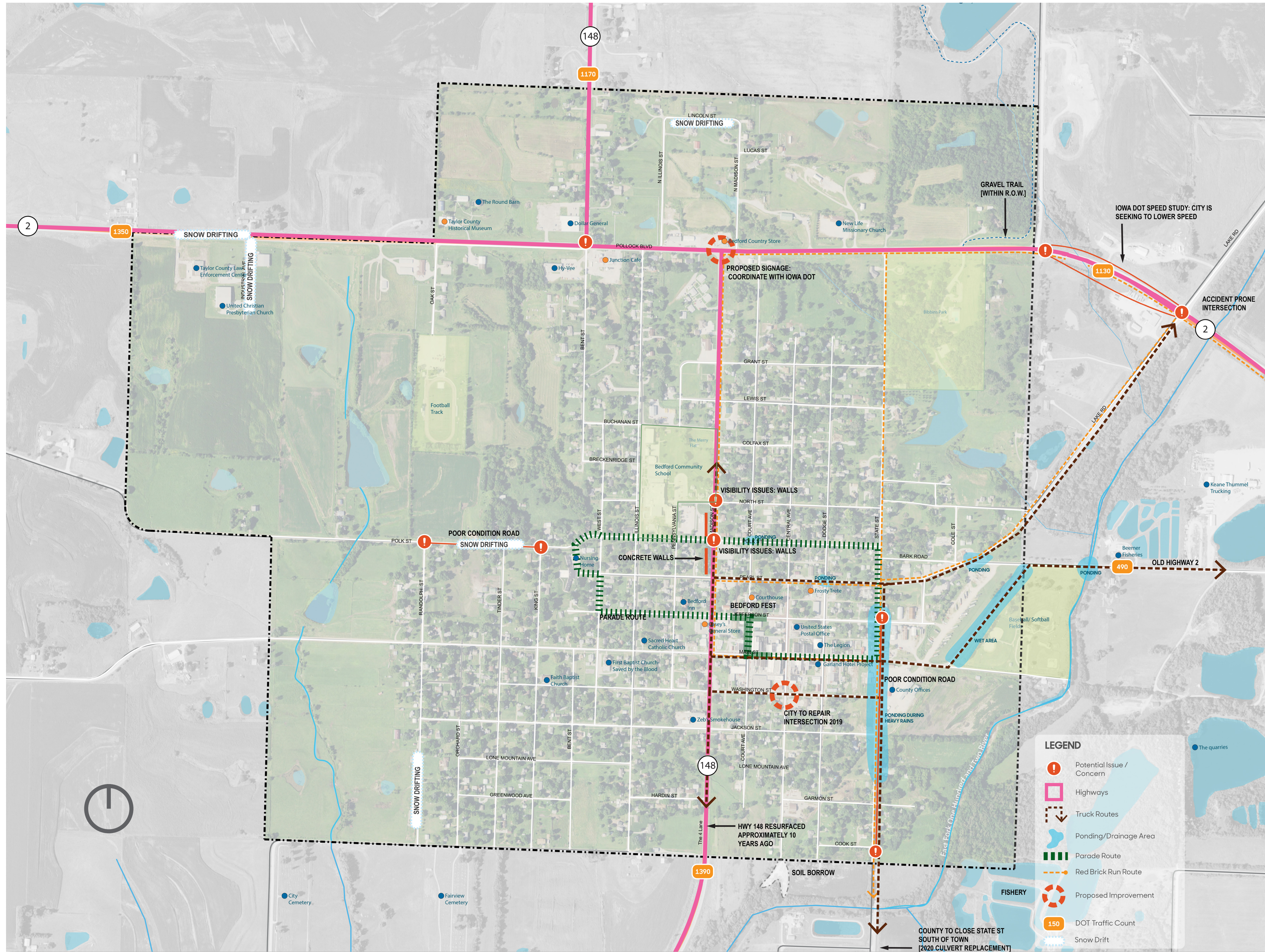
Transportation Mapping

Through observation, anecdotal evidence, focus-group research, and discourse with City of Bedford, Taylor County, and Iowa Department of Transportation officials, the Community Visioning team has inventoried existing transportation assets, needs, and concerns throughout the community.

Existing challenges for pedestrians include high curbs and steep slopes in the downtown area, gaps in the sidewalk network along highly traveled pedestrian routes, and impaired visibility for pedestrians and motorists at some intersections, such as those near the recently installed concrete retaining walls along Highway 148.

Specific areas lacking pedestrian connectivity and accessibility are located in the aforementioned downtown area, along Highway 2 between Hy-Vee and Highway 148, to and from the west and north entrances to Bibbins Park, and between downtown and the baseball fields along Main Street.

High traffic volumes along Highways 2 and 148 and through downtown present opportunities for traffic-calming measures and enhancement to designated pedestrian routes. Additionally, a lack of pedestrian-scale way-finding signage prevents visitors from easily navigating around town. New way-finding measures can assist visitors seeking to take advantage of the town's various amenities, while improvements to pedestrian routes will enhance connectivity among areas of interest throughout Bedford.



Transportation Inventory

Bedford

Transportation Inventory

Design Team

LA: Dylan Jones, PLA, ASLA
Intern: Paola Monllor Torres

Iowa State University | Trees Forever | Iowa Department of Transportation

