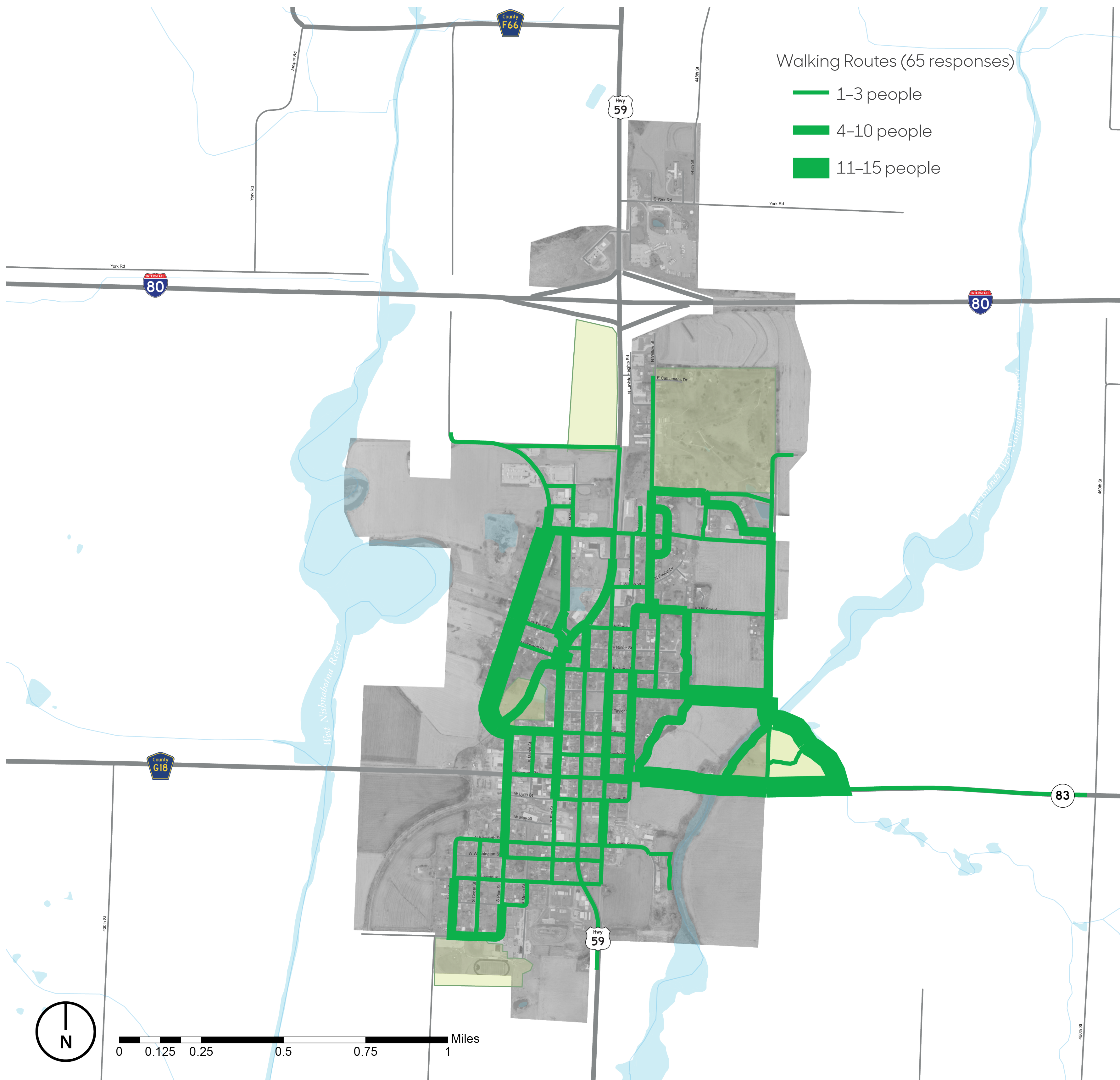


# Where They Walk

This map shows the walking routes identified by 65 survey respondents. The frequency that the routes are used is depicted by their width, with most frequently used routes being the thickest. Survey respondents indicated that they walk primarily on the trails in Eddington Memorial Park, as well as along North Frost Avenue from Wool Street to Wood Street. East High Street and East Thomas Street, which connect to Eddington Memorial park, are also frequented by walkers. Walkers also take the trail adjacent to Mez Buttermilk Flat Park, North Walnut Street, and North Willow Street.



Map Source: Iowa Department of Natural Resources, "Natural Resources Geographic Information Systems Library," <http://www.igsb.uiowa.edu/nrgislib/>.

# Why They Go That Way

On a scale of 1 to 5, with 5 being the most important, survey participants ranked the characteristics and features that made their walking experience better. These features are categorized as either "connections" or "conditions and elements." Among Avoca participants, connections are more important than conditions/elements, with mean values of 3.64 and 3.38, respectively. In terms of connections, access to trails is most important with a mean value of 4.49. Good sidewalks (4.53) are the most important element to walkers, followed by well-kept surroundings (4.21). Other significant factors include lighting (3.86), seasonal beauty (3.68) and trees and shade (3.51).

