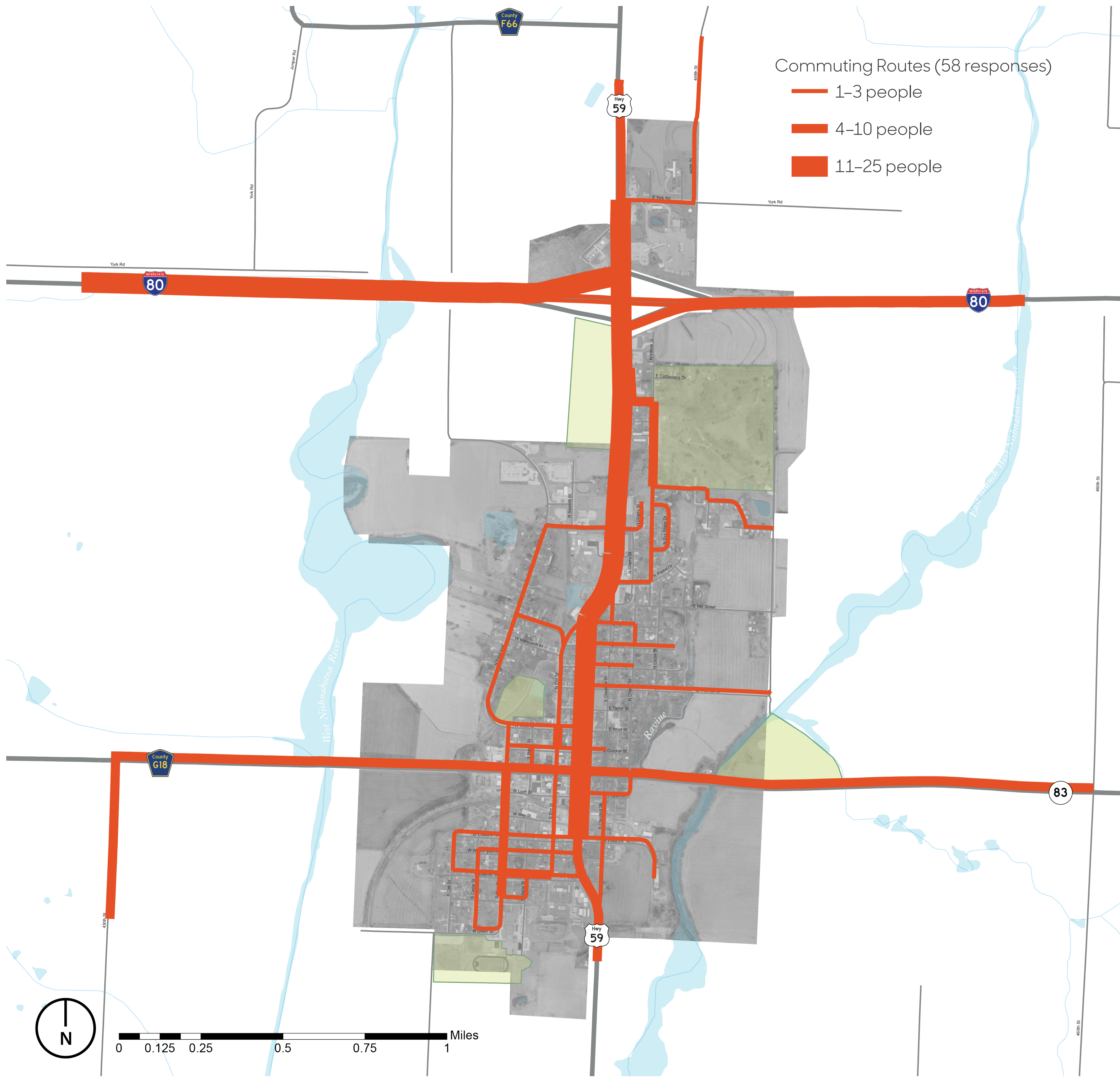


How They Get There

This map shows the commuting routes identified by 58 survey respondents. The frequency that the routes are used is depicted by their width, with most frequently used routes being the thickest. The primary commuting corridor in Avoca is Highway 59 north-south. Most out-of-town commuters take Highway 59 to Interstate 80 West, presumably to the Omaha-Council Bluffs Metro area. In addition to Highway 59 through town, commuters also travel north-south on Pine Street south of West High Street and Lavista Heights Road just south of the I-80 interchange.

The circulation patterns that emerge when routes for biking, walking, and commuting are overlaid suggest suitable types of transportation enhancements. For example, where pedestrian and vehicular traffic intersect, such improvements could include creating better visibility, defining crossing points, or improving signage.



Map Source: Iowa Department of Natural Resources, "Natural Resources Geographic Information Systems Library," <http://www.igsb.uiowa.edu/nrgislib/>.

Why They Go That Way

On a scale of 1 to 5, with 5 being the most important, survey participants ranked the characteristics and features that factored into their choice of commuting route. Among Avoca participants, time to destinations is the most important factor, with a mean value of 4.32. Avoiding weather-related issues such as snow and ice (4.00) is the second most important factor determining commuting routes. Avoiding vehicular traffic is also considered somewhat important, with a mean value of 3.17. Scenic views, seasonal beauty, and avoiding neighborhoods are not critical factors in determining commuting routes.

