

Transportation Mapping

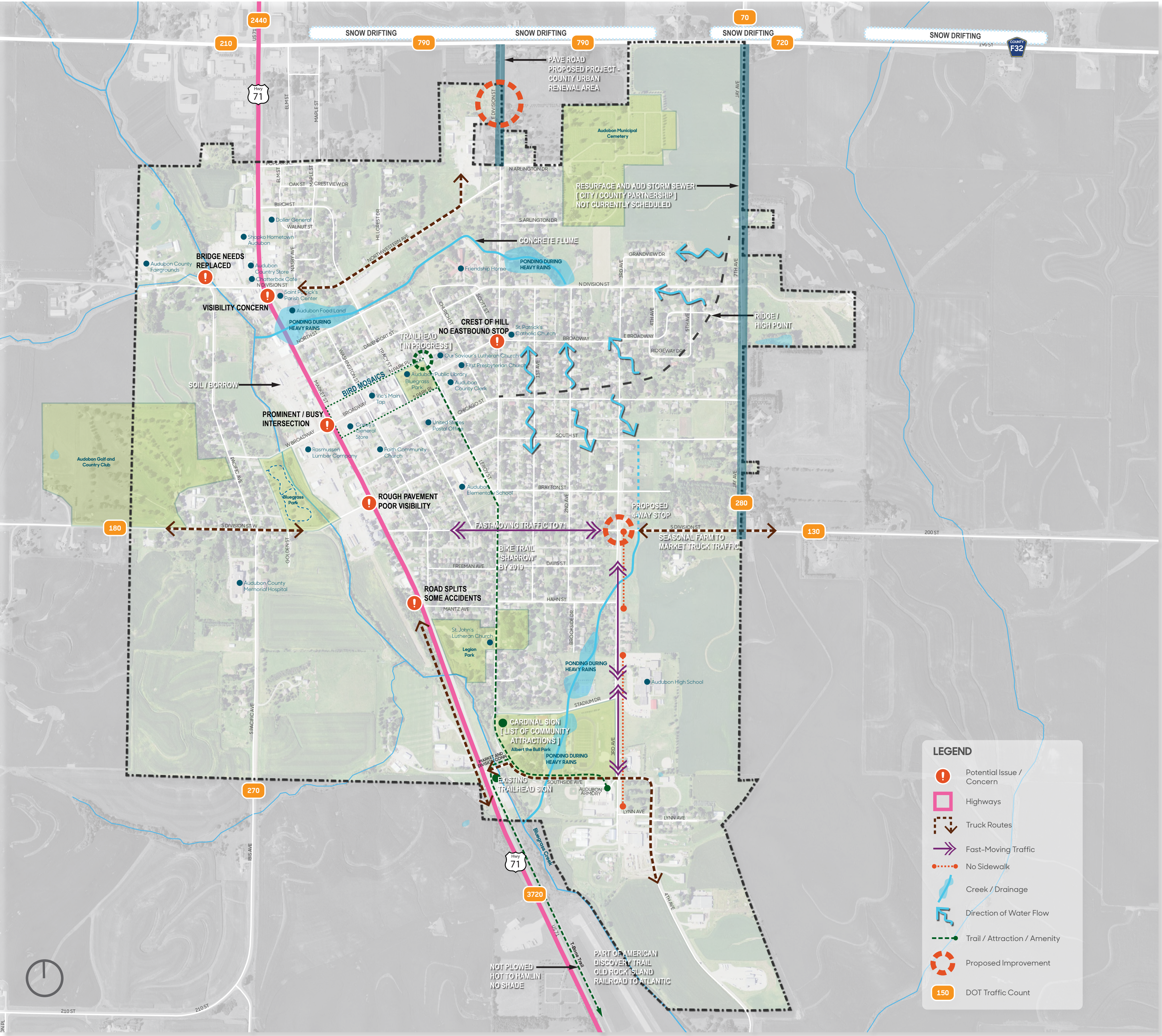
Through observation, anecdotal evidence, focus-group input, review of the transportation assets and barriers assessments, and discourse with City of Audubon, Audubon County, and Iowa Department of Transportation officials, the Community Visioning team has inventoried existing transportation assets, needs, and concerns throughout the community.

Existing challenges for pedestrians include busy streets and high traffic speeds, especially along South Division St, 3rd Ave, and Highway 71. Third Ave serves as a critical connector between Audubon High School, the Recreation Center to the south, and residential neighborhoods to the north, yet traffic conditions and gaps in the sidewalk network create difficult conditions for pedestrians along this corridor.

Additional visibility and degrading infrastructure concerns along Highway 71 should be studied further to provide motorists and pedestrians alike with safe routes into and through the town.

Existing trails and planned improvements such as trailheads and traffic control measures at 3rd Ave and South Division St aid in strengthening connectivity and promoting safe travel throughout Audubon.

New way-finding measures and infrastructure improvements can assist and expand upon existing transportation strengths, building a stronger sense of community identity, connectivity, and overall safety and accessibility for both residents of Audubon and visitors.



Intersection of Highway 71 and Broadway St



Albert the Bull Park