

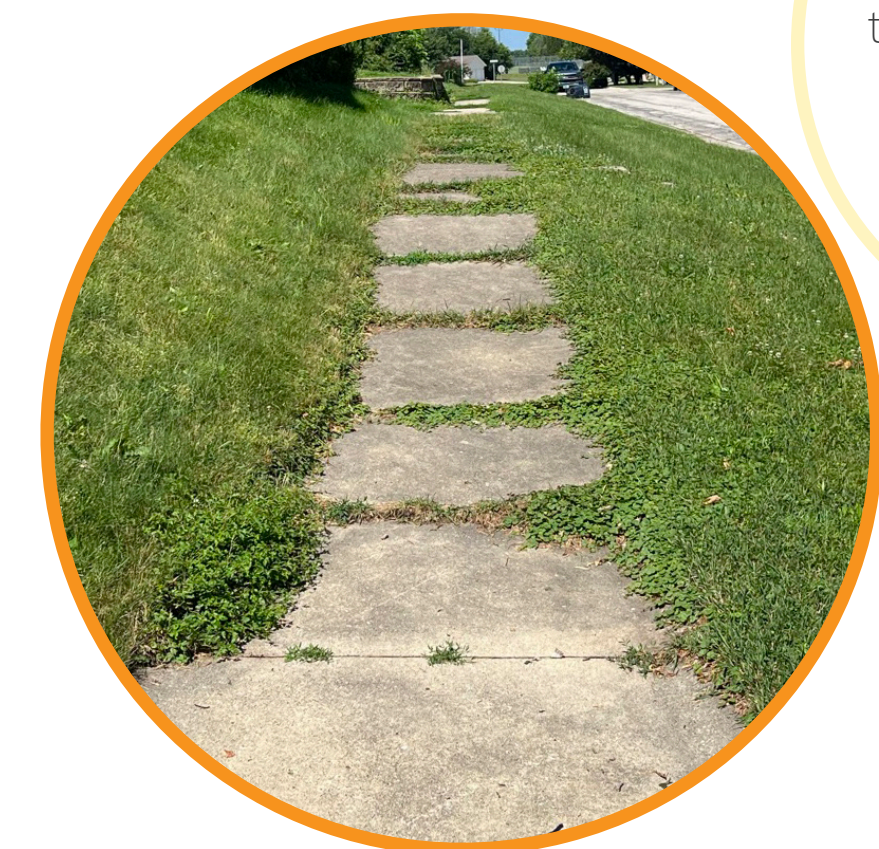
## Pedestrian Connections

During the design workshop, residents were asked to draw out their preferred walking routes within the community. Many residents chose the same routes, which aided in deciding where the focus for sidewalk improvements could be within Aplington. The west loop trail was the overall favorite for residents eager to add a recreation trail in town. Other popular destinations in Aplington include the Aplington Elementary and Aplington-Parkersburg Middle School, City Park, and Parriott Street, which is Aplington's downtown business area. The primary focus for sidewalk improvements to connect to these common destinations and the proposed recreational trail should occur on Nash Street, which was also the most popular existing walking route for residents. Residents would like to see updated sidewalks, pedestrian lighting, and additional sidewalks on Nash Street to connect to the proposed east and west trail loops.

"...we walk on the streets and not usually the sidewalks... [because] sidewalks are cracked and not good...and there [are] not sidewalks everywhere."

(reference: What People Said, 3b)

## Existing sidewalk conditions on Nash Street



"We do have a lot of active families. I mean, there's a lot of people running and walking the streets."

(reference: What People Said, 3b)

# Aplington Pedestrian Connections

## RITLAND+KUIPER Landscape Architects

Landscape Architects: Craig Ritland, FASLA, & Samantha Price, ASLA

Intern: Amber Pearce

Iowa State University | Trees Forever | Iowa Department of Transportation

