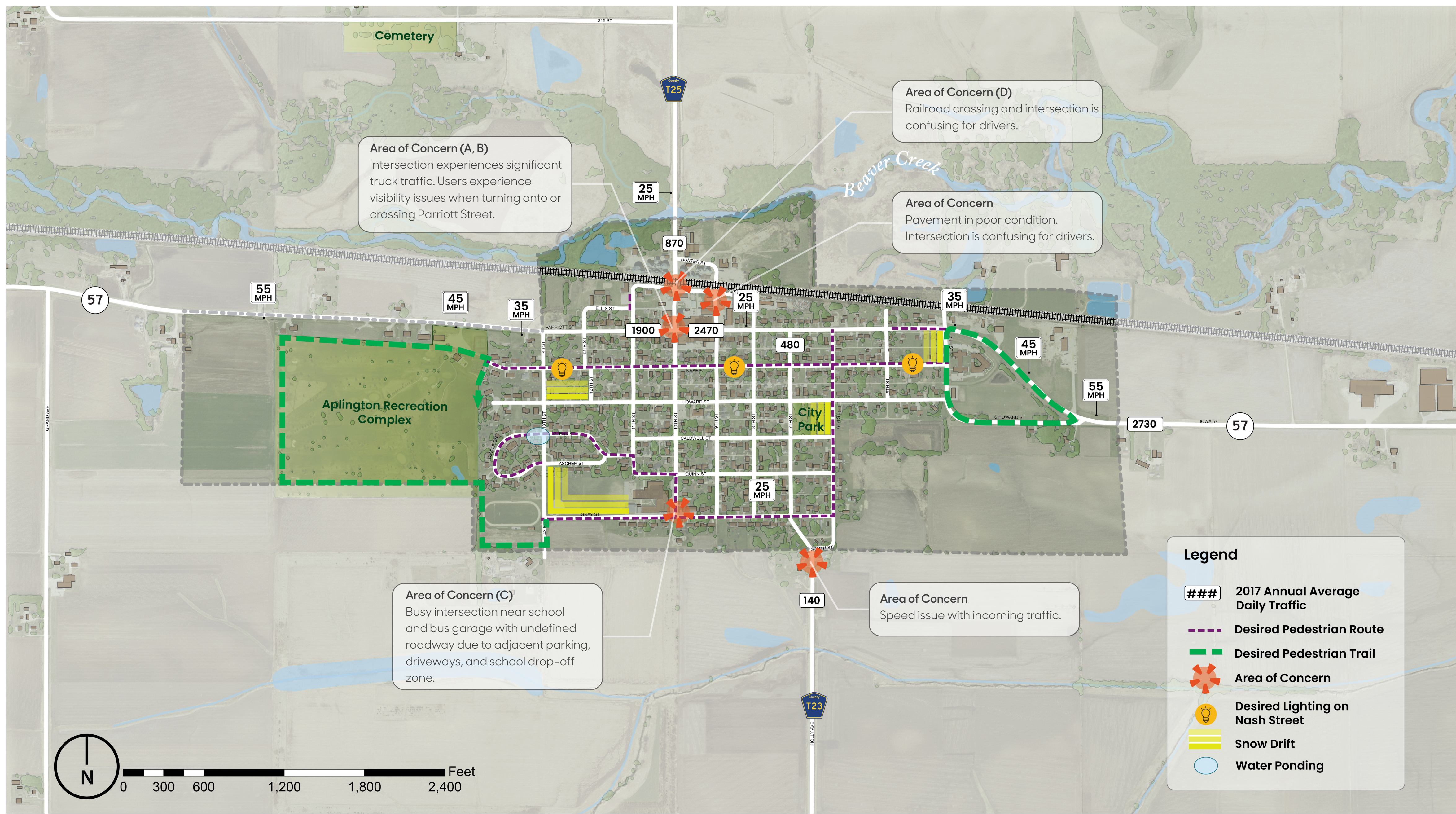


Transportation Inventory and Analysis

Aplington, population 1,116, is located on State Highway 57, roughly 35 miles east of Interstate 35 and five miles west of Parkersburg. An active railroad borders the community on the north side and intersects Hickory Avenue/County Road T25.

Highway 57 and Hickory Avenue bring heavy traffic directly into downtown Aplington, as shown by Iowa DOT 2017 Annual Average Daily Traffic counts. Highway 57 is also a common route many residents use to commute to and from work in nearby communities. The highway intersects the community running east-west and becomes a four-lane road through town and the downtown business district, which includes parallel parking. This six-lane-wide street causes visibility issues for vehicles and pedestrians trying to access or cross the street, leaving residents feeling intimidated: "If you're coming from the north to the south on 10th Street to Parriott, you can't see a semi coming from the west" (What People Said, 3b). The community would like to see increased visibility along this roadway for both pedestrians and vehicles.

Aplington residents have expressed concerns focused on pedestrian mobility throughout the town. Many residents mention using the roadways as a pathway for walking, running, and biking due to the lack of good sidewalks. The preferred pedestrian route is along Nash Street because it is located off the heavily trafficked Parriott Street and has pleasant year-round scenery. Additional sidewalks are wanted to create greater pedestrian-friendly circulation and connections to important destinations in Aplington, such as the middle school and the pool. Creating and updating the sidewalks throughout town would give the community a greater sense of safety and mobility in Aplington.



Areas of Concern



(A) 10th Street and Parriott Street intersection looking east



(B) Looking east on Parriott Street



(C) Large concrete area by bus garage and school



(D) Railroad crossing on T25

Aplington Transportation Inventory

RITLAND+KUIPER Landscape Architects

Landscape Architects: Craig Ritland, FALSA & Samantha Price, ASLA

Intern: Amber Pearce

Iowa State University | Trees Forever | Iowa Department of Transportation

