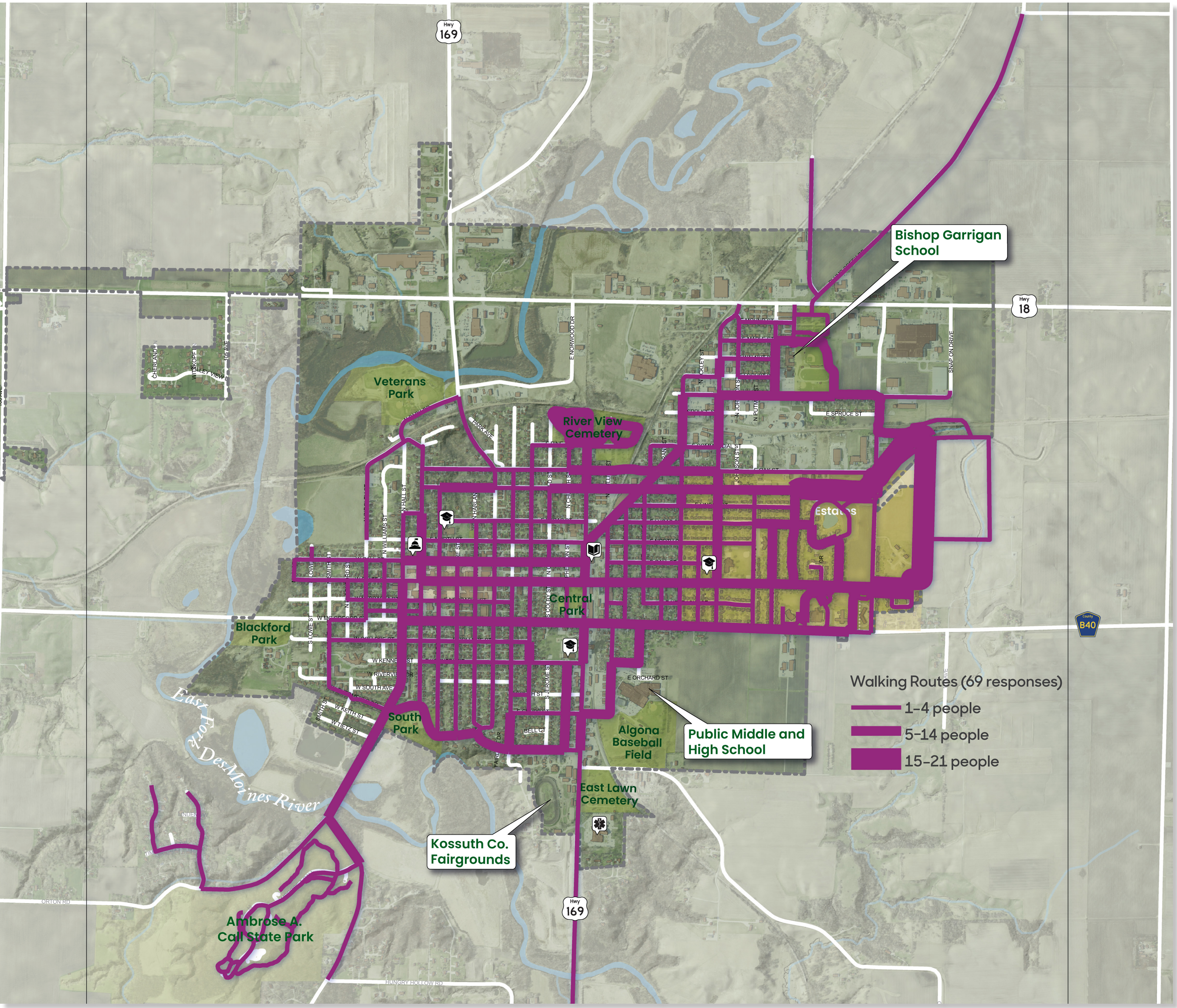


# Where They Walk

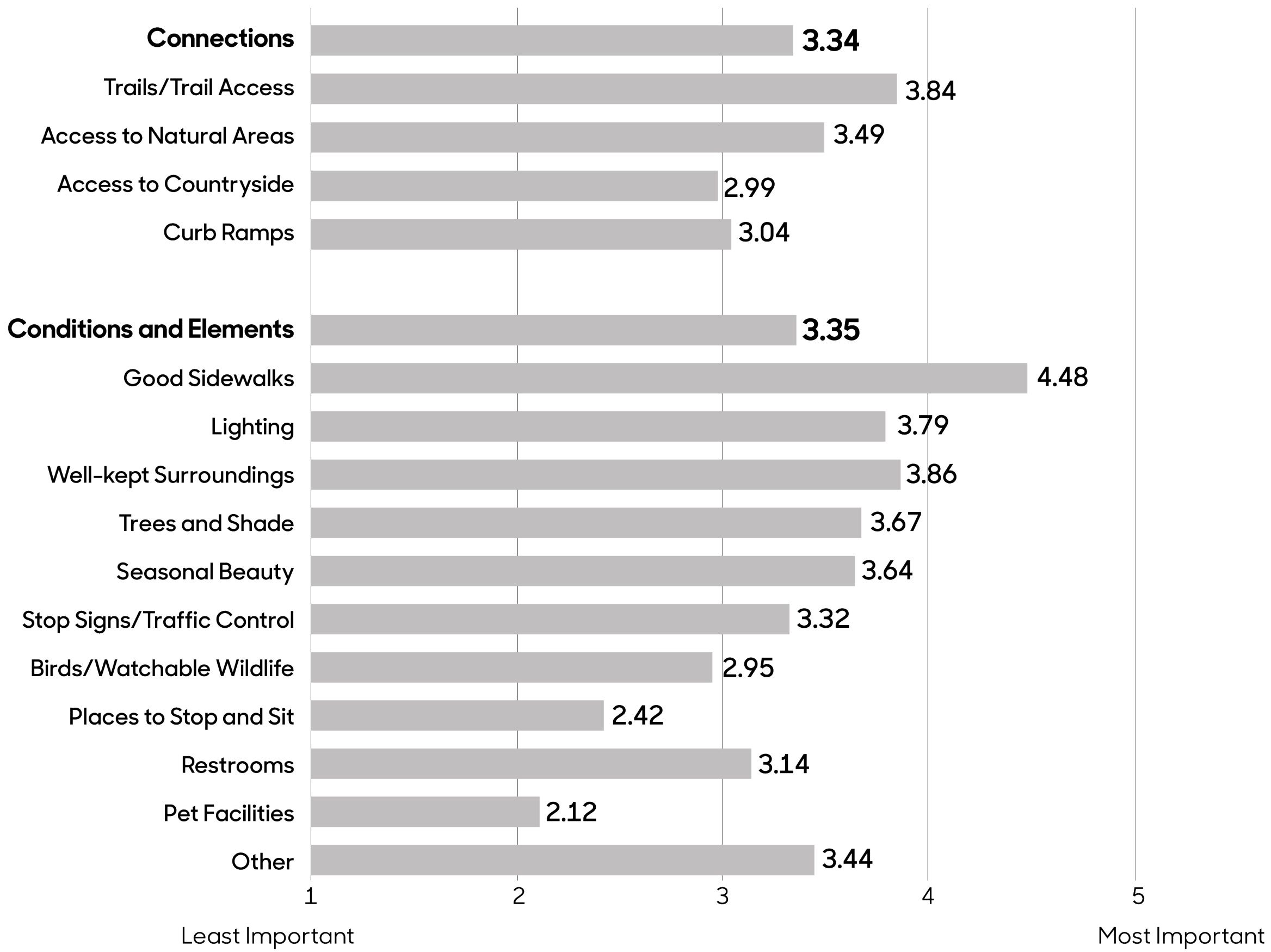
This map shows the walking routes identified by 69 survey respondents. The frequency that the routes are used is depicted by their width, with most frequently used routes being the thickest. The trail at the Diamond Estates is the most popular walking venue among survey respondents. Riverview Cemetery and at Call State Park are also commonly used for walking. Streets in town frequented by walkers include McGregor (210th Street), State, Call, and Diagonal Streets. People also walk near both high schools and South Park, as well as to Call State Park.



Map Source: Iowa Department of Natural Resources, "Natural Resources Geographic Information Systems Library," <http://www.igsb.uiowa.edu/nrgislib/>.

# Why They Go That Way

On a scale of 1 to 5, with 5 being the most important, survey participants ranked the characteristics and features that made their walking experience better. These features are categorized as either "connections" or "conditions and elements." Algona participants consider connections and conditions/elements nearly equally important, with mean values of 3.34 and 3.35, respectively. In terms of connections, access to trails is most important with a mean value of 3.84. Good sidewalks (4.48) are the most important condition/element to walkers, followed by well-kept surroundings (3.86) and lighting (3.79). Other significant factors include trees and shade (3.67) and seasonal beauty (3.64).



# Algona Walking Routes

## Transportation Behavior and Needs Survey

Julia Badenhop, Sandra Oberbroeckling, Chad Hunter

Iowa State University | Trees Forever | Iowa Department of Transportation

