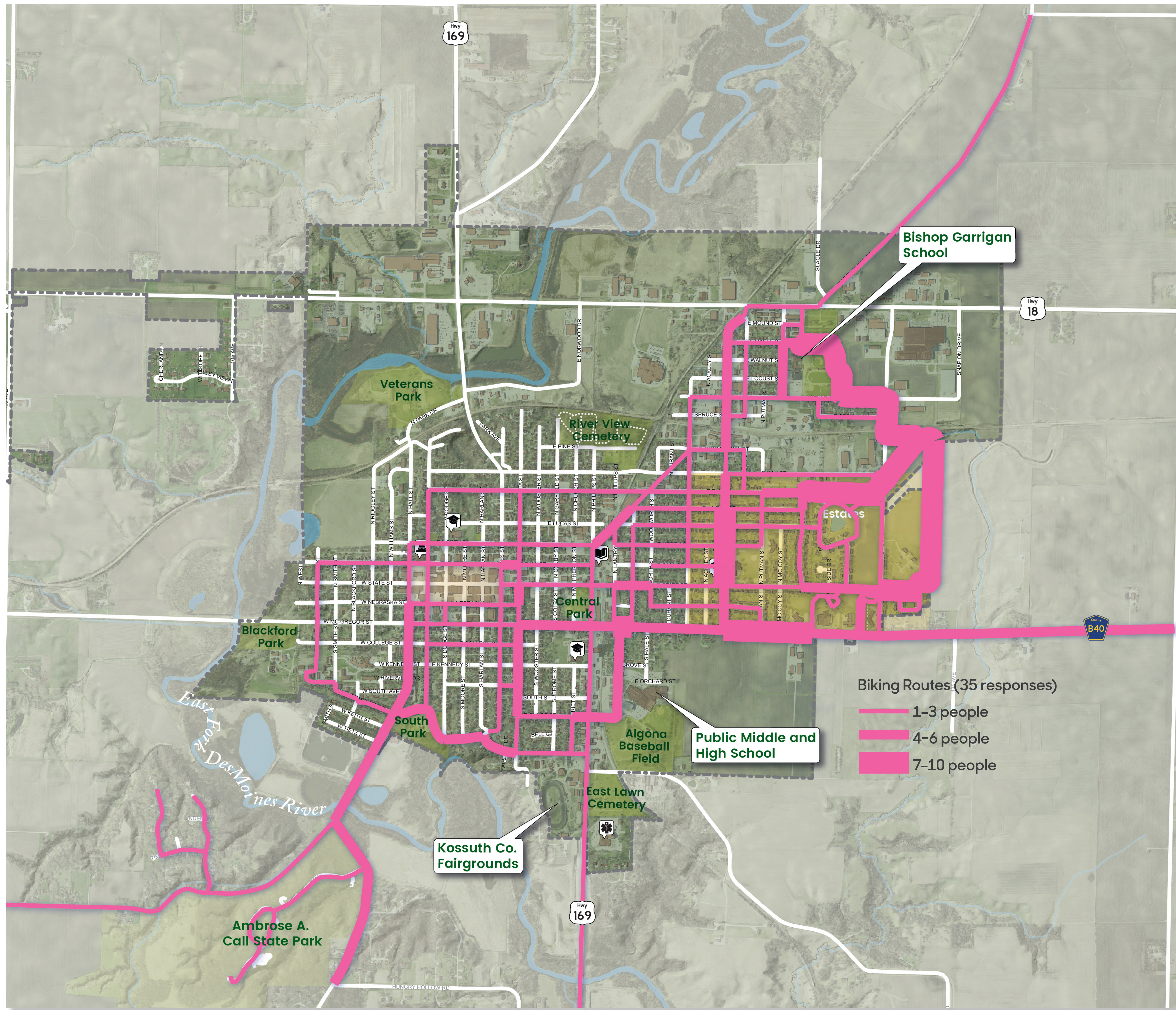


Where They Bike

This map shows the biking routes identified by 35 survey respondents. The frequency that the routes are used is depicted by their width, with most frequently used routes being the thickest. Like walkers, bikers most often use the trail at the Diamond Estates, as well as the segment connecting to the Bishop Garrigan School. N Main Street and 210th Street (McGregor) near Diamond Estates are also heavily traveled. Some people bike on Orlon Road to Call State Park, and some go east out of town on County Road B40. Bikers also ride the streets near the Algona High School and South Park.



Map Source: Iowa Department of Natural Resources, "Natural Resources Geographic Information Systems Library," <http://www.igsb.uiowa.edu/nrgislib/>.

Why They Go That Way

On a scale of 1 to 5, with 5 being the most important, survey participants ranked the characteristics and features that made their biking experience better. These features are categorized as either "connections" or "conditions and elements." Algona participants consider connections more important than conditions/elements, with mean values of 3.37 and 3.04, respectively. Access to trails is most important connection to survey respondents with a mean value of 4.23. In terms of conditions/elements, well-kept surrounding (4.00) are the most important among bikers, followed by stop signs/traffic control (3.86), seasonal beauty (3.40), and lighting (3.37).

