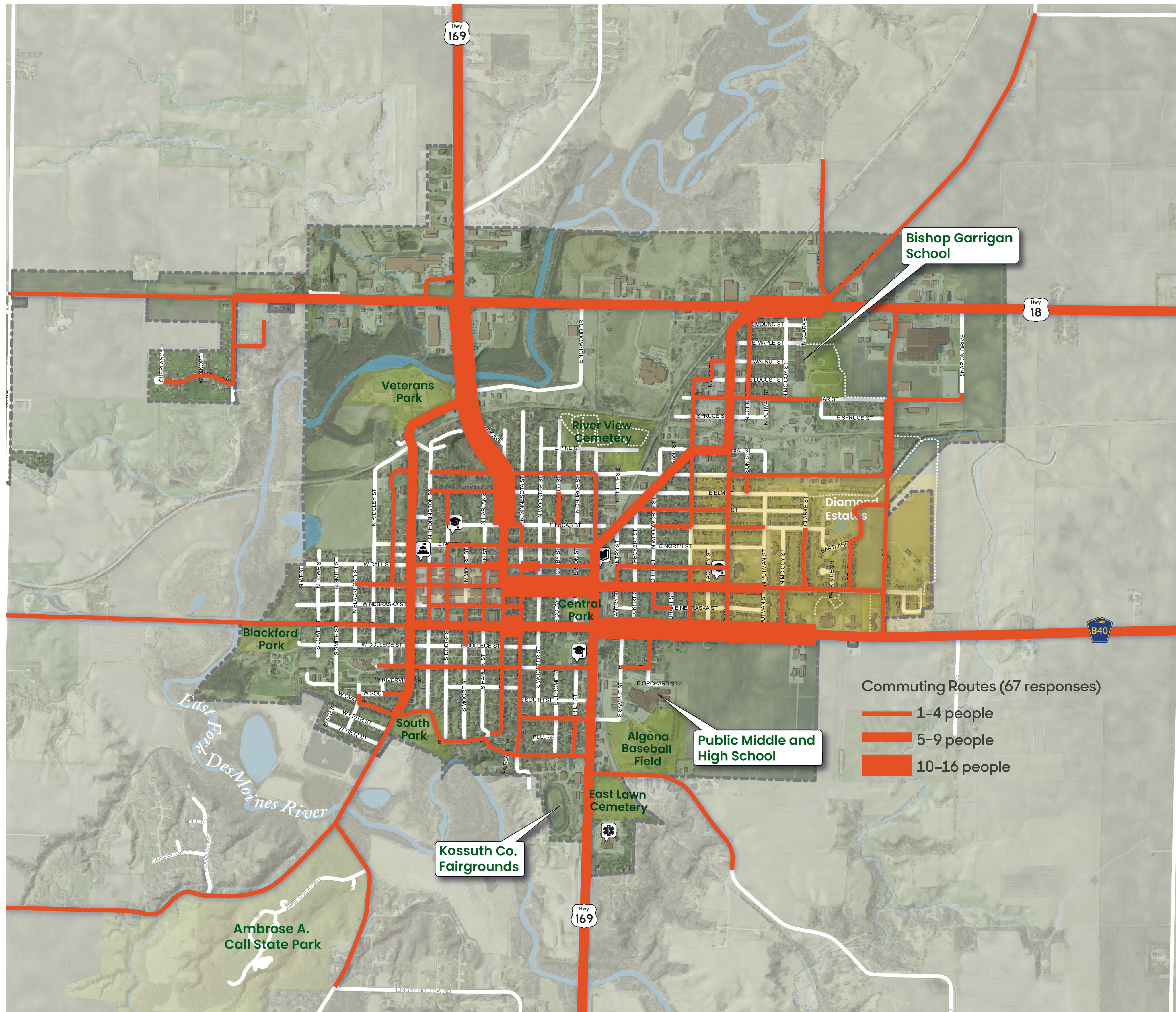


# How They Get There

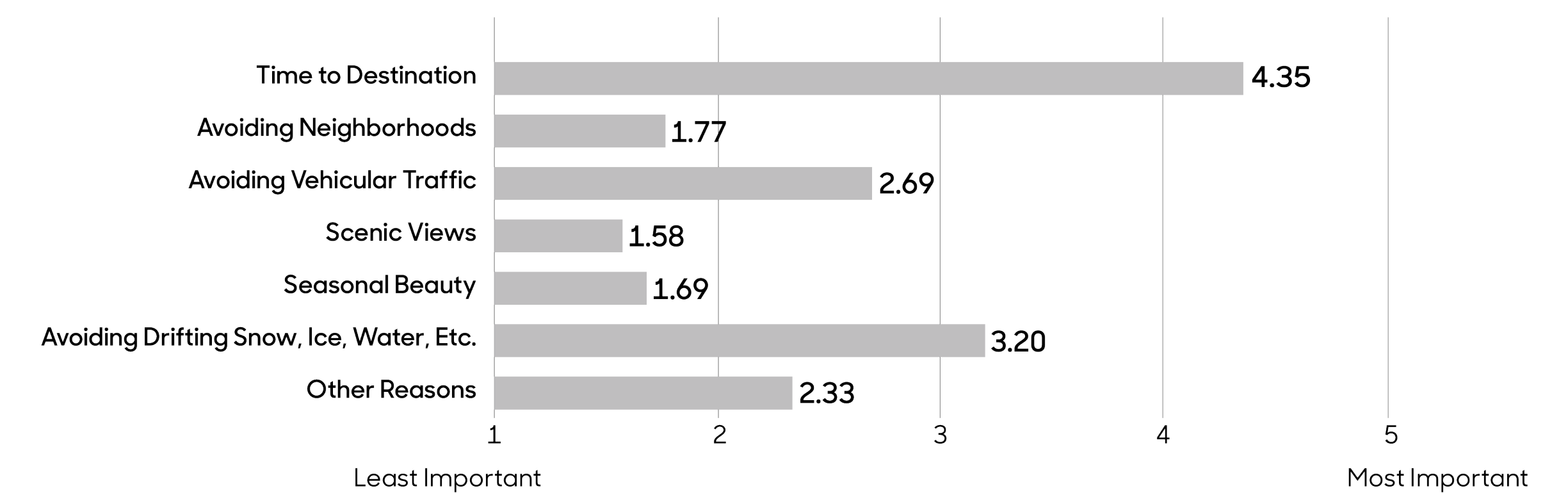
This map shows the commuting routes identified by 67 survey respondents. The frequency that the routes are used is depicted by their width, with most frequently used routes being the thickest. The primary east-west commuting corridors into and out of Algona are Highway 18 and County Road B40, and Highway 169 is the major north-south route. The most heavily used corridors in town are Highway 169 (N Jones and E State Streets), 210th Street from the Diamond Estates to S Phillips Street, and the section of Highway 18 connecting N Main Street to Plum Creek Road. N Main, Diagonal, and N Hall Streets are also frequently used.

The circulation patterns that emerge when routes for biking, walking, and commuting are overlaid suggest suitable types of transportation enhancements. For example, where pedestrian and vehicular traffic intersect, such improvements could include creating better visibility, defining crossing points, or improving signage.



# Why They Go That Way

On a scale of 1 to 5, with 5 being the most important, survey participants ranked the characteristics and features that factored into their choice of commuting route. Among Algona participants, time to destination is the most important factor in determining commuting routes, with a mean value of 4.35. Avoiding weather-related issues such as snow and ice is also somewhat important (3.20). Avoiding vehicular traffic, scenic views, seasonal beauty, and avoiding neighborhoods are not critical factors in determining commuting routes.



Map Source: Iowa Department of Natural Resources, "Natural Resources Geographic Information Systems Library," <http://www.igsb.uiowa.edu/nrgislib/>.

# Algona Commuting Routes

## Transportation Behavior and Needs Survey

Julia Badenhope, Sandra Oberbroeckling, Chad Hunter

Iowa State University | Trees Forever | Iowa Department of Transportation

