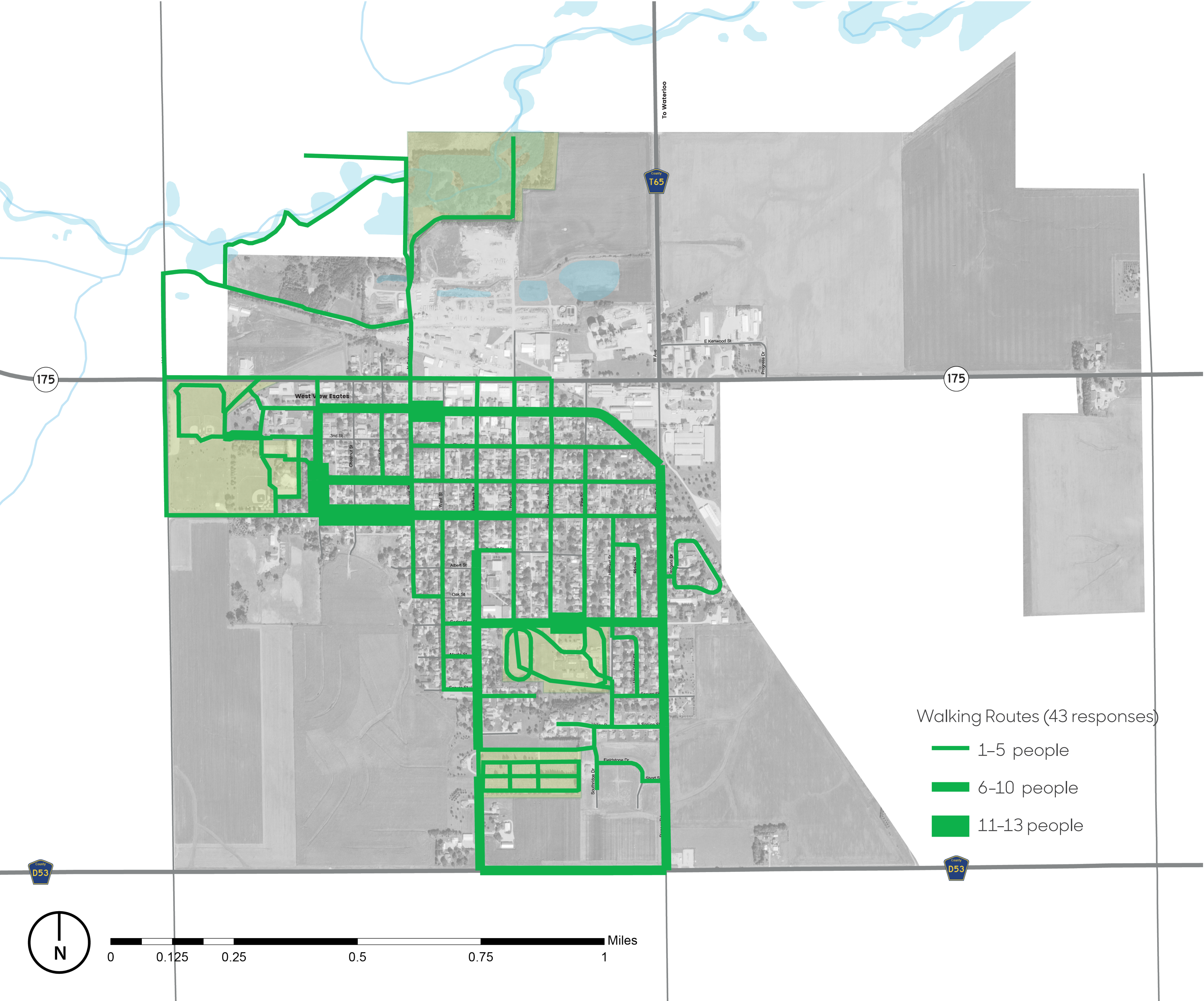


Where They Walk

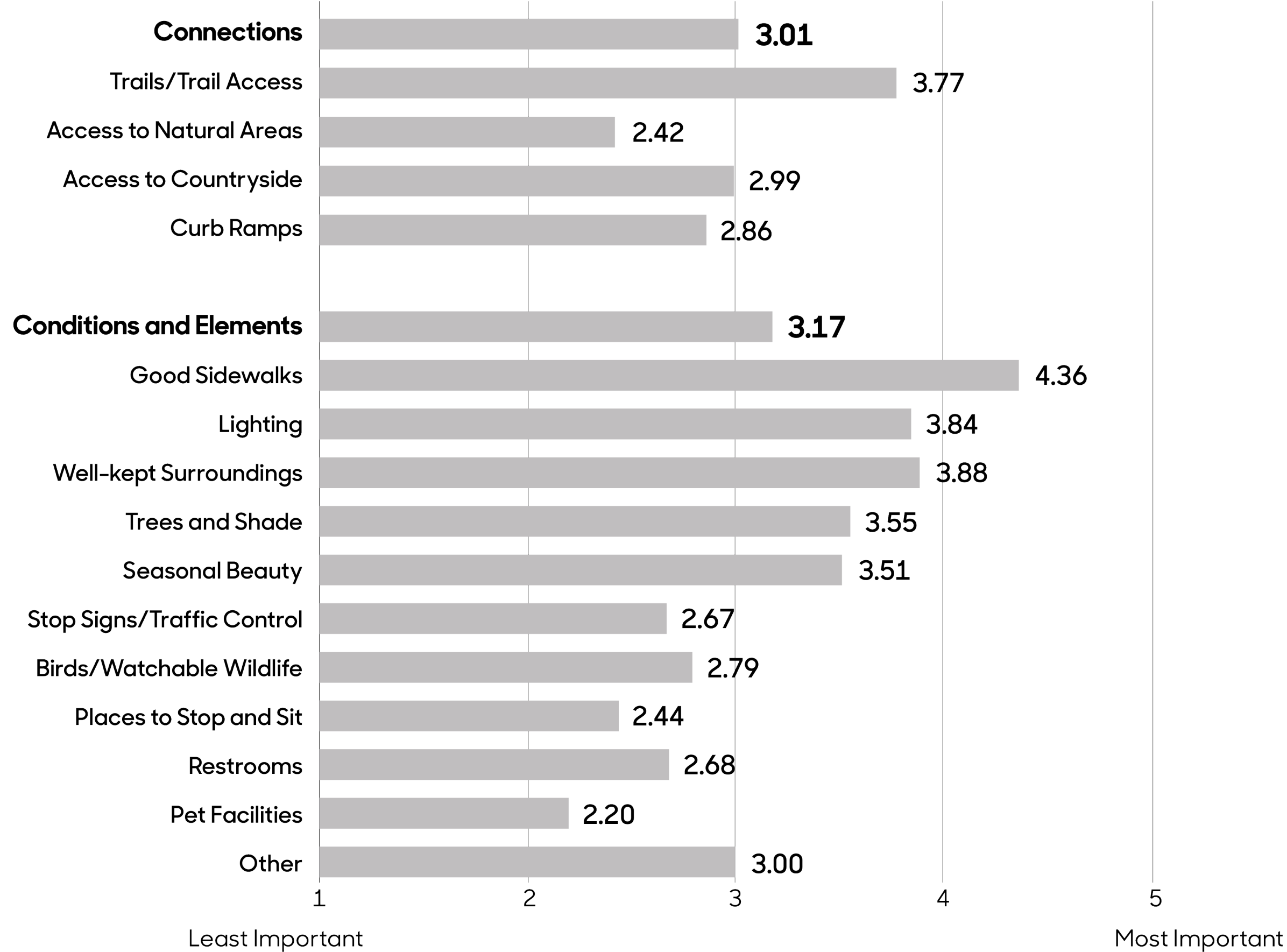
This map shows the walking routes identified by 43 survey respondents, five of whom were self-selected high school students. The frequency that the routes are used is depicted by their width, with most frequently used routes being the thickest. Survey respondents indicated that they walk primarily along the streets of Reinbeck, with the most frequently walked streets in town being College Street, Park Street, Cedar Street by the school, Main Street, and Pioneer Road. In addition, some people walk the trails in Elmwood Park, some walk in the cemetery, and some use the school track.



Map Source: Iowa Department of Natural Resources, "Natural Resources Geographic Information Systems Library," <http://www.igsb.uiowa.edu/nrgislibx/>.

Why They Go That Way

On a scale of 1 to 5, with 5 being the most important, survey participants ranked the characteristics and features that made their walking experience better. These features are categorized as either "connections" or "conditions and elements." Among Reinbeck participants, conditions and elements are of slightly more important than connections, with mean values of 3.17 and 3.01, respectively. In terms of connections, access to trails is most important with a mean value of 3.77. Good sidewalks (4.36) are the most important element to walkers, followed by well-kept surroundings (3.88). Other significant factors include lighting (3.84), trees and shade (3.55) and seasonal beauty (3.51).



Reinbeck Walking Routes

Transportation Behavior and Needs Survey

Julia Badenhope, Sandra Oberbroeckling, Aaron Lewis, Austin Alexander, Lexi Blank, Kristian Schofield, Minni Davis, Clare Kiboko, Abby Schafer

Iowa State University | Trees Forever | Iowa Department of Transportation

