

- Maintenance**
- Clear hedge, volunteer trees and excess shrubbery
 - Open views into the park
 - Good shade trees can remain



Bottom image shows existing conditions. Top image shows how improved maintenance opens up views into the park.

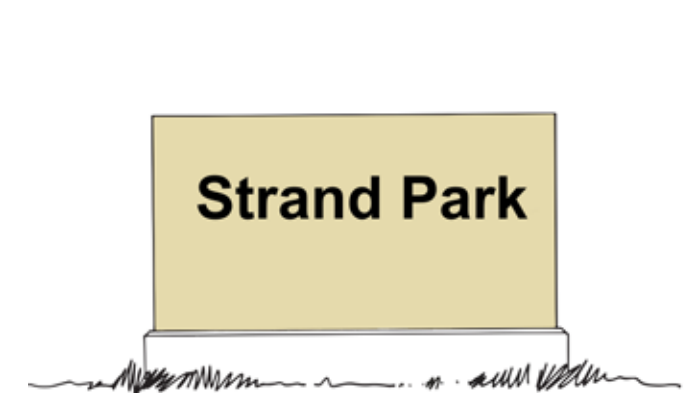
- Picnic Shelters**
- Two Proposed Picnic Shelters



Image shows a proposed picnic shelter located in Strand Park.

- Court Enhancements**
- Cerro Gordo County is pursuing funding to level and resurface the basketball and tennis courts

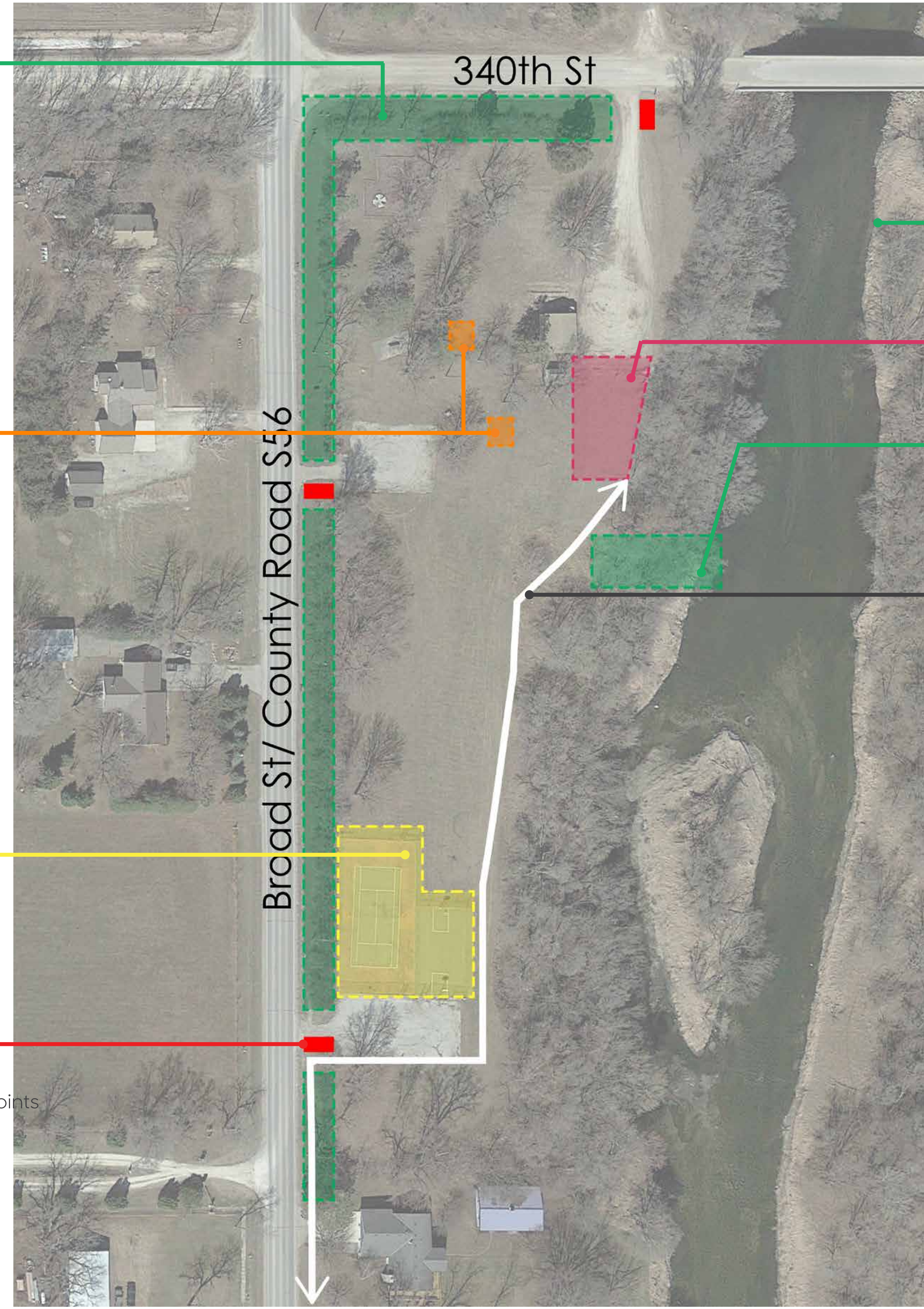
- Way-finding & Signage**
- Proposed entrance signs at each of the access drives
 - Proposed way-finding signage directing to the Shell Rock River access points



Proposed entrance sign



Proposed way-finding sign



East Side River Access

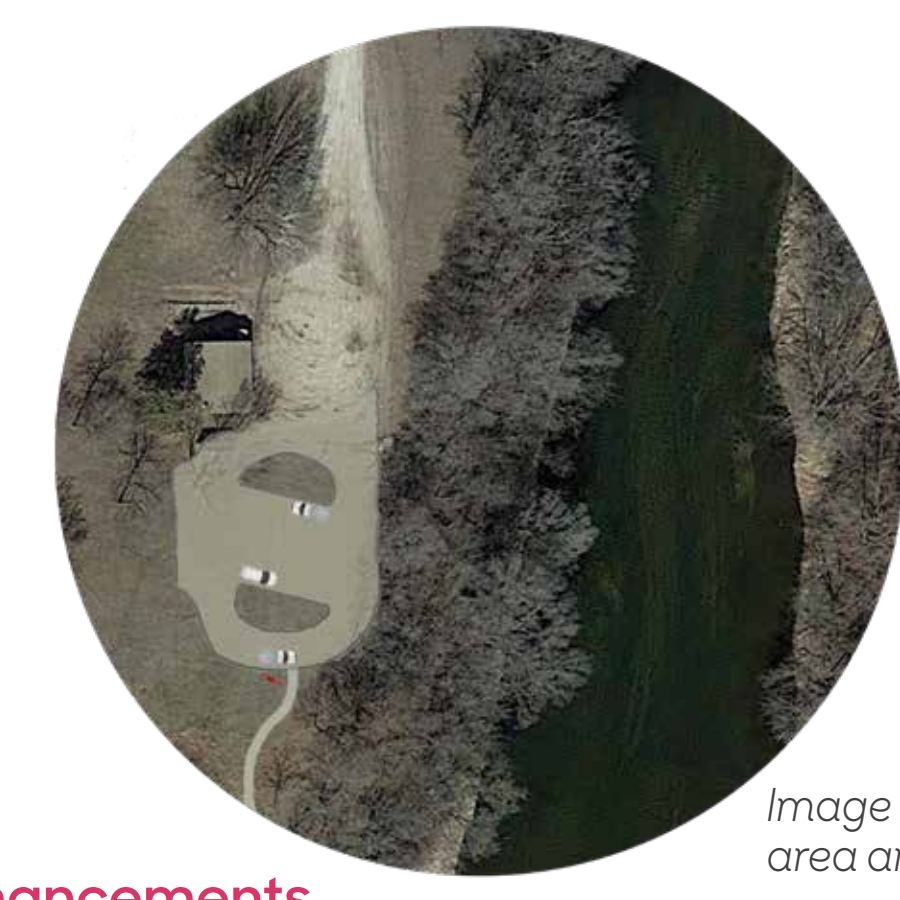


Image shows the proposed expanded parking area and trail to river access

Parking Enhancements

- Proposed expanded parking suitable for water recreation activities

West Side River Access

- Clear out overgrown vegetation to existing river access
- Proposed trail connection to parking area
- Improved signage to river access

Connectivity

- Proposed sidewalk/trail extension along east side of County Road S56
- Proposed 10' recreation trail connecting park features

Strand Park Improvement Suggestions

Cerro Gordon County's Strand Park on the north end of Plymouth is a wonderful asset to the City. The Shell Rock River access in the park for tubers and paddlers is an important part of the community's identity. Two main issues keep it from reaching its full potential: lack of a pedestrian connection to town and the overgrown vegetation that screens the park from County Road S56.

A trail connection on the east side of County Road S56 and clearing the vegetation to open the view into the park would be transforming.

In addition, the existing primary river access is on the east side of the river, where the parking area can become congested, forcing vehicles to park along 340th Street. The design team is suggesting the County, perhaps with assistance from the City, make improvements to the access on the west side of the river to absorb some of this traffic. These improvements could include additional parking, clearing a more open path to the river and new park signage including better way-finding that would direct users to the additional access opportunity.

The visioning committee would also like to see the County consider new shelters for tubers, paddlers, family reunions and special events.

Plymouth

Strand Park Improvement Suggestions

RITLAND+KUIPER Landscape Architects
 Landscape Architects: Craig Ritland, FASLA & Samantha Price, PLA, ASLA
 Landscape Architecture Intern: Jerry Philbin
 Iowa State University | Trees Forever | Iowa Department of Transportation

